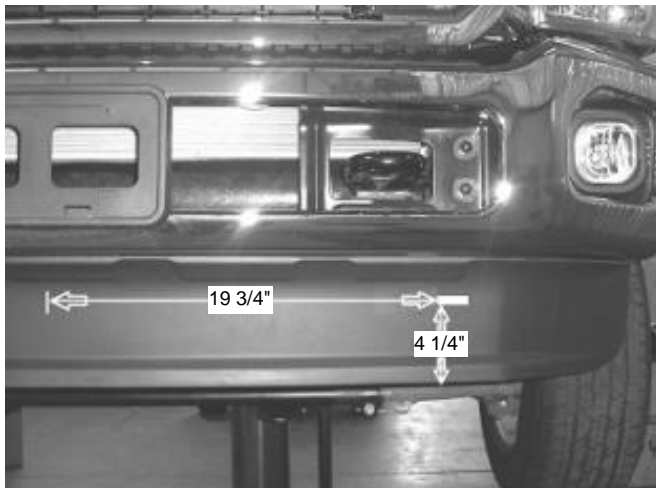
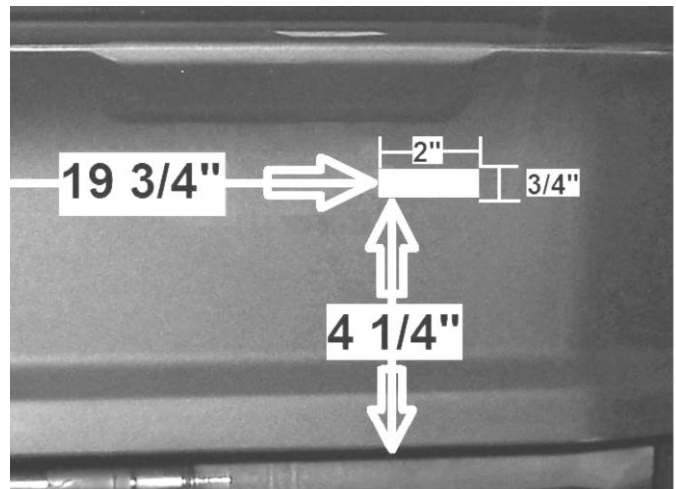


PICTURE 1



PICTURE 2



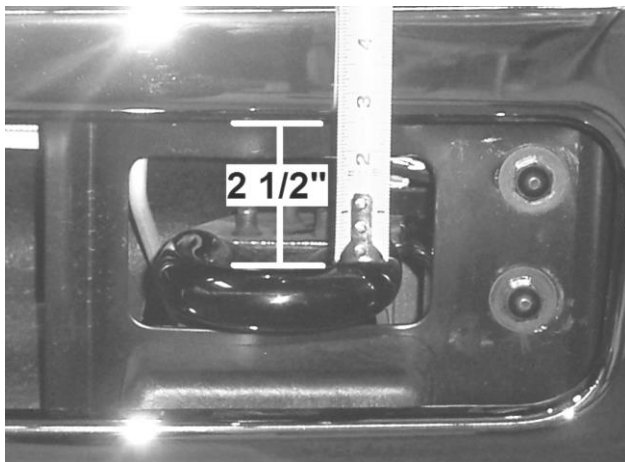
Step - 2 Measure the gap between the bumper opening and the top of the tow hook (the gap should measure approximately 2 1/2") on both sides of the vehicle. **Picture # 3.** Record these measurements as the installation requires removal of the bumper bolts and you will need to reference the measurements to properly readjust the bumper height to its original position.

Step - 3 Remove the (2) factory bumper bolts and nut plate securing the bumper to the vehicle. **Picture # 4.**

NOTE: The bumper bolts are held in place by metal retaining clips that must be removed to completely remove the bumper bolts.

WARNING! Do not remove the driver and passenger side bumper bolts at the same time or the bumper may fall.

PICTURE 3



PICTURE 4



Step - 4 From the underside of the bumper, locate and remove the (2) factory hex nuts securing the under rider bracket to the outside of the frame. **Picture # 5.**

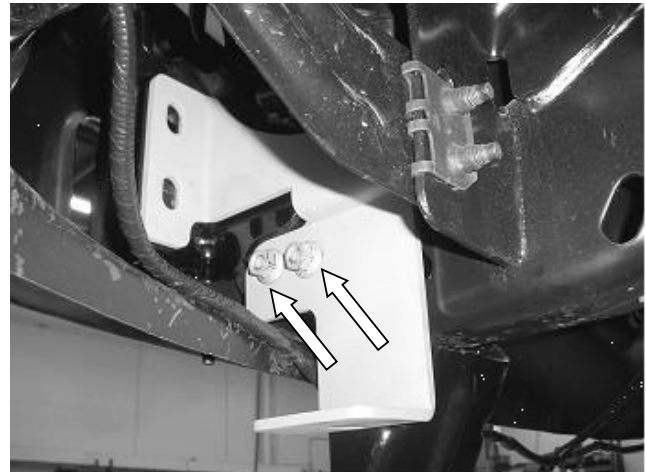
Step - 5 Position the driver side lower bracket behind the bumper, align the mounting bolt holes in the lower bracket with the under rider bracket holes and secure the lower bracket to the frame using the factory double bolt plate and hex nuts. **Picture # 6.** Leave the nuts and bolt plate loose for final adjustment.

NOTE: The bumper valance was removed from the vehicle for photo purposes.

PICTURE 5



PICTURE 6

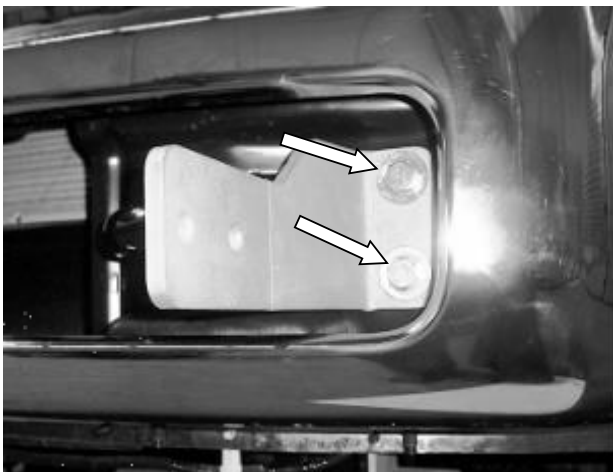


Step - 6 Position the driver side upper bracket on the bumper, align the mounting bolt holes in the upper bracket with the bumper holes and secure the upper bracket to the vehicle and to the lower bracket using (2) 1/2 x 2" hex bolts, (2) 1/2" flat washers, (2) 1/2 lock washers and (2) 1/2" hex nuts. **Picture # 7.** Check the bumper alignment and temporarily tighten these nuts and bolts at this time.

NOTE: It may be necessary to loosen the bolts and readjust the bumper once the grille guard has been installed.

Step - 7 Position the driver side lower extension bracket through the opening cut out in the bumper valance and secure the extension bracket to the lower bracket using (1) 1/2 x 1 1/2" hex bolt, (2) 1/2" flat washer, (1) 1/2" lock washers and (1) 1/2" hex nut. **Picture # 8.** Leave the nut and bolt loose for final adjustment.

PICTURE 7



PICTURE 8



Step - 8 Repeat the above steps to install the passenger side upper and lower bracket.

Picture # 9

Step - 9 With assistance, position the grille guard up and to the outside of the upper and lower brackets and attach the grille guard to the brackets using the 1/2 x 1 1/2" hex bolts, 1/2" flat washers, 1/2" lock washers and 1/2" hex nuts supplied.

GRILLE GUARD
14371T

PICTURE 9



PICTURE 10



Step - 10 Level and adjust the grille guard and bumper (if necessary), and tighten all nuts and bolts at this time.

Remember to check and retighten the nuts and bolts periodically.

