

# INSTALLATION INSTRUCTIONS

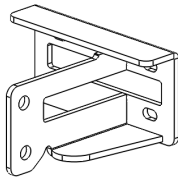
GRILLE GUARD

Dodge Ram HD 2500 & 3500 / Gas & Diesel  
2010 - 2013

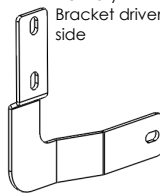
**14220T**

Parts List				
Item	QTY	Code	Description	Max Torque
1	1 pc	57624	Defender	
2	1 set	574240DA	Main Bracket	
4	1 set	506244AA	Auxiliary bracket	
5	8 pcs		3/8 x x2" Hex bolt	
6	16 pcs		3/8" flat washer	
7	8 pcs		3/8" lock washer	
8	8 pcs		3/8" hex nut	30 Lbs Ft
9	6 pcs		1/2 x 1 1/2 " Hex bolt	
10	12 pcs		1/2" flat washer	
11	6 pcs		1/2" lock washer	
12	6 pcs		1/2" hex nut	65 Lbs Ft

Main  
Bracket  
Driver side



Auxiliary  
Bracket driver  
side



## Required Tool:

- A. Ratchet w/5" extension
- B. 9/16" Wrench or Socket
- C. 3/4" Wrench & socket
- D. 16mm & 18mm Wrench & socket
- E. Tape rule
- F. Utility knife

1. Before beginning the installation read all instructions thoroughly and verify that all hardware is accounted for. If there are any listed parts missing, please notify your distributor immediately.

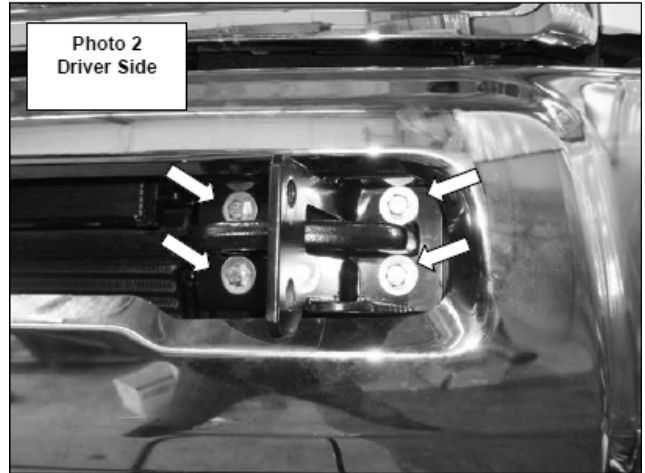
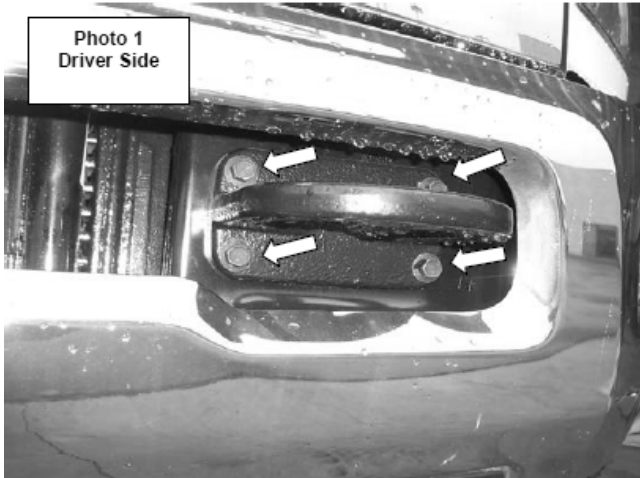
2. To maintain and care this product keep it clean and do not use abrasive cleaners or polish waxes. It is recommended to use only non-abrasive automotive wax such as pure carnauba to avoid scratches and rust.

3. The approximate installation time is **60 min.**

4.- Beginning with the driver side, remove the nuts, bolts and tow hook, **(Photo 1)**.

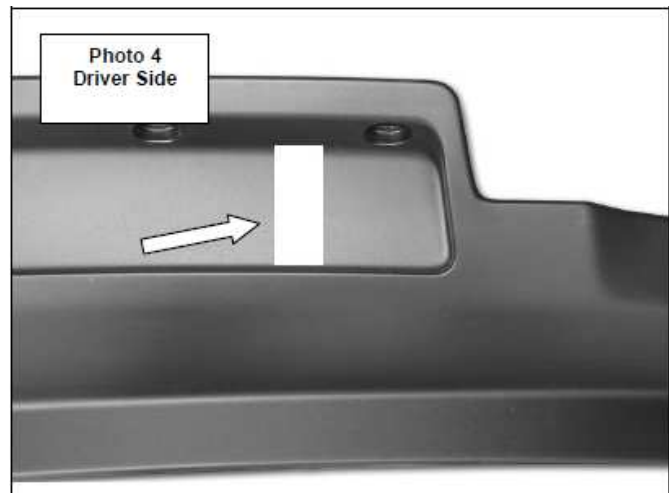
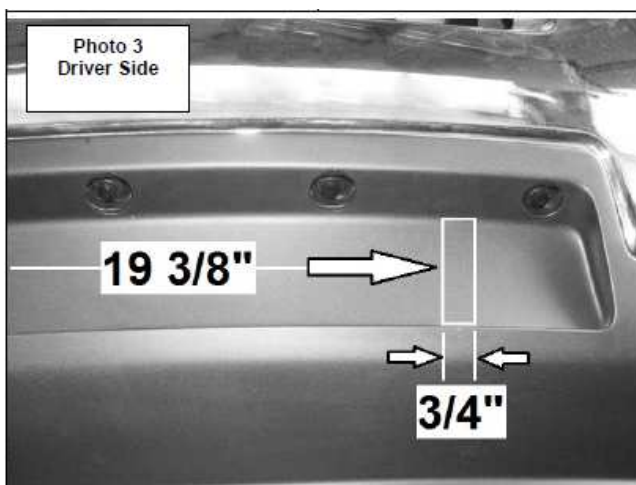
**NOTE:** The factory nuts securing the inner (2) tow hook bolts may be difficult to remove. Use a socket with a long extension to reach the hex nuts on the inner tow hook bolts.

5. Position the driver side main bracket over the tow hook and secure the bracket and tow hook to the vehicle using (4) 3/8" x 2" hex bolts, (8) 3/8" flat washers, (4) 3/8" lock washers and (4) 3/8" hex nuts, **(Photo 2)**. Reattach the left side of the tow hook to the vehicle using the (2) factory nuts and bolts. Leave the nuts and bolts loose for final adjustment. Repeat for the passenger side main bracket installation.



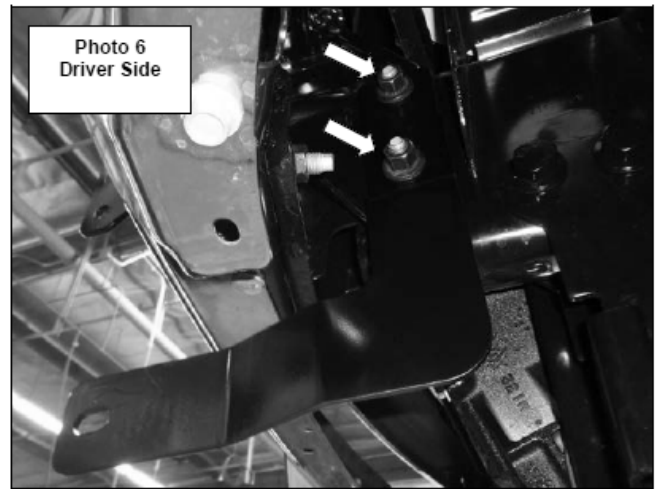
6. An opening must be cut out in each side of the lower bumper valance for the auxiliary brackets to extend through. Measure 19 3/8" outward from the center of the bumper valance and mark the area indicated on the driver side of the bumper valance, **(Photo 3)**.

7. Use a utility knife and carefully cut out the opening **(Photo 4)**. Measure and cut an opening in the passenger side of the bumper valance.



8. Remove the (2) factory hex nuts from the paired bolts securing the bumper brackets to the frame, (Photo 5). Position the driver side auxiliary bracket over the paired bolts, and secure the bracket to the frame using the factory hex nuts, (Photo 6). Leave the nuts loose for final adjustment. Repeat for the passenger side auxiliary bracket installation.

**Note:** The lower bumper valance was removed for photo purposes.



9. With assistance, position the grille guard up to the brackets, and attach the grille guard to each of the upper brackets using (2) 1/2" x 1 1/2" hex bolts, (4) 1/2" flat washers, (2) 1/2" lock washers and (2) 1/2" hex nuts, and to each auxiliary bracket using (1) 1/2" x 1 1/2" hex bolt, (2) 1/2" flat washers, (1) 1/2" lock washer and (1) 1/2" hex nut (Photo 7).

10. Align the grille guard with the vehicle and tighten the factory and supplied nuts and bolts, (Photo 8).

11. Remember to check and retighten the hardware periodically.

