

**O.E. Xtreme Brackets**

390905

**Kia Sorento (except SX)**

ITEM	QTY.	PART #	DESCRIPTION	TORQUE
1	2 pc	390900AA	Front Bracket	
2	2 pc	390900BA	Rear Bracket	
3	2 kit	390904BA	Auxiliar Bracket	
4	2 pc	370200AA	bolt plate	
5	4 pc	390900CA	5/16" bolt plate	
6	2 pc	370201AA	Spacer plate	
7	2 pc	AST-TU06	3/8" Hex. nut	
8	2 pc	AST-RP03	3/8" Flat washer	
9	2 pc	AST-RPR03	3/8" Pressure washer	
10	4 pc	AST-RP04	5/16" Flat washer	
11	4 pc	AST-RPR04	5/16" Pressure washer	
12	4 pc	AST-TU08	5/16" Hex. nut	
13	4 pc	AST-T139	5/16 x 1" Hex. Screw	
14	8 pc	AST-T479	5/16" Square head bolt	
15	12 pc	AST-RP16	5/16" Flat washer	
16	12 pc	AST-RPR11	5/16" Pressure washer	
17	4 pc	AST-TU47	5/16" Hex. nut	
18	2 pc	ASH-E37	Vinyl Gasket	

**Tools Required:**

- A. Ratchet
- B. 1/2", 9/16" socket
- C. ½ ", 9/16" spanner

1.-Before beginning the installation read all instructions thoroughly and verify that all hardware is accounted for. If there are any listed parts missing, please notify your distributor immediately.

2.- To maintain and care this product keep it clean and do not use abrasive cleaners or polish waxes. It is recommended to use only non-abrasive automotive wax such as pure carnauba to avoid scratches and rust.

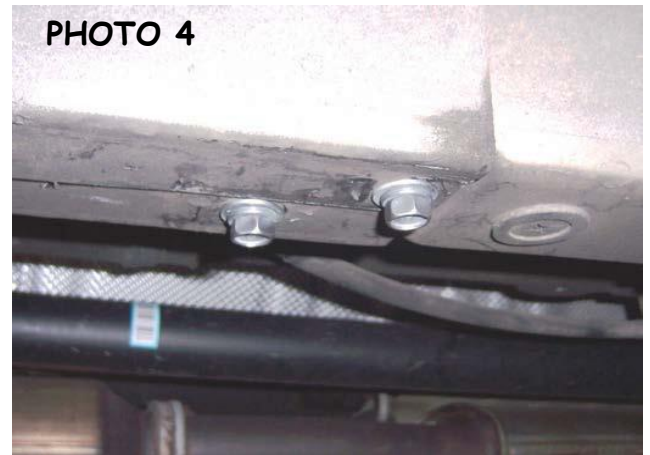
3.- The approximate installation time is **30 Minutes**.

4.- Begin the installation with the driver side of the vehicle. Locate the plastic plug in the rocker panel at the front of the vehicle. Remove the plastic plug and install (1) 5/16" t-bolt in the rocker panel, **(Photo #1 & #2)**.



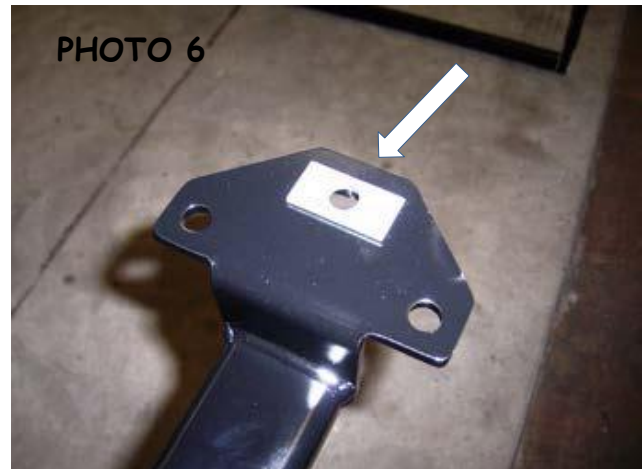
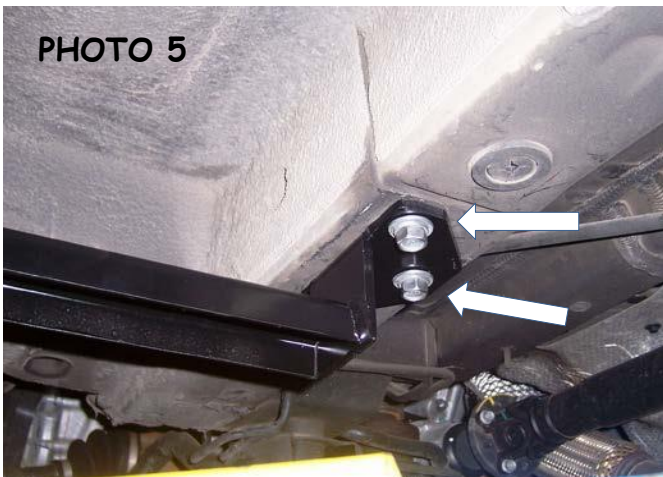
5.- Attach the driver side front auxiliary bracket to the rocker panel using the 5/16" t-bolt, (1) 5/16" flat washer, (1) 5/16" lock washer and (1) 5/16" hex nut, (**Photo #3**). Leave the hex nut loose for final adjustment.

6.- Remove the (2)10mm factory hex bolts located on the bottom of the frame, (**Photo #4**).



7.- Attach one of the front brackets to the bottom of the frame using the factory bolts, (**Photo #5**). Leave the bolts loose for final adjustment.

**Note:** Position (1) supplied spacer as shown over the obround hole in the front bracket, and install between the bracket and frame, (**Photo #6**).



8.- Attach the opposite end of the front bracket to the auxiliary bracket using (1) 5/16" x 1" hex bolt, (1) 5/16"

flat washer, (1) 5/16" lock washer and (1) 5/16" hex nut, (**Photo #7**). Leave the hex nut and bolt loose for final adjustment.

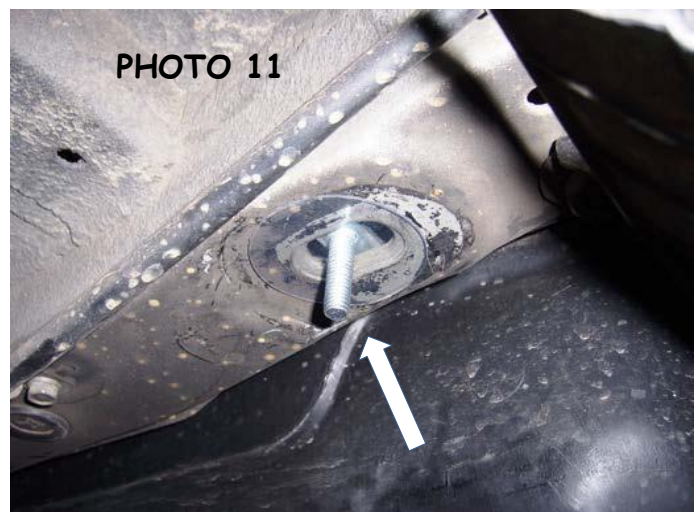
9.- Locate the plastic plug in the rocker panel at the rear of the vehicle, (**Photo #8**). Remove the plastic plug and install (1) 5/16" t-bolt in the rocker panel.



10.- Attach the driver side rear auxiliary bracket to the rocker panel using the 5/16" t-bolt, (1) 5/16" flat washer, (1) 5/16" lock washer and (1) 5/16" hex nut, (**Photo #9**). Leave the hex nut loose for final adjustment.



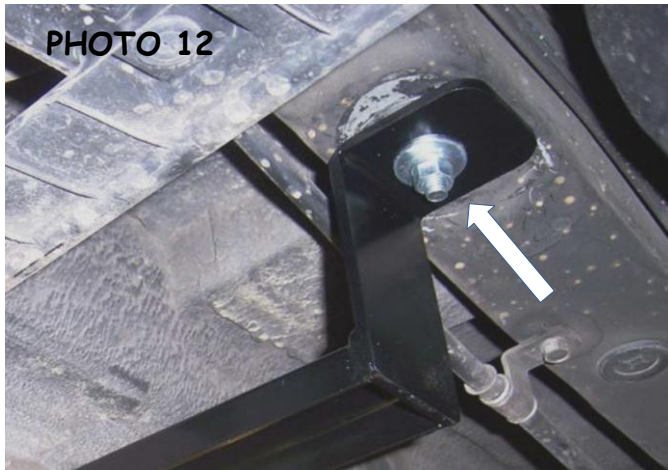
11.- Locate the plastic plug in the frame at the rear of the vehicle, (**Photo #10**). Remove the plastic plug and install (1) 3/8" t-bolt in the rocker panel, and install (1) vinyl gasket over the threads to prevent the t-bolt from falling into the frame, (**Photo #11**).



12.- Attach one of the rear brackets to the bottom of the frame using the 3/8" t-bolt, (1) 3/8" flat washer, (1)

3/8" lock washer and (1) 3/8" hex nut, (**Photo #12**). Leave the hex nut loose for final adjustment.

13.- Attach the opposite end of the rear bracket to the auxiliary bracket using (1) 5/16" x 1" hex bolt, (1) 5/16" flat washer, (1) 5/16" lock washer and (1) 5/16" hex nut, (**Photo #13**). Leave the hex nut and bolt loose for final adjustment.



14.- Set the driver side, side bar on top of the brackets and align the side bar with the vehicle. Position the clamp brackets inside the opening of the side bar and align the clamp bracket threads with the slot holes in the brackets. Attach the side bar to each of the brackets using the clamp bracket, (2) 5/16" x 1" square head bolts, (2) 5/16" lock washers and (2) 5/16" flat washers, (**Photo #14**). Leave the square head bolts loose for final adjustment.



15.- Re align the side bar with the vehicle and tighten all side bar, bracket and vehicle nuts and bolts.

16.- Repeat the above installation steps to install the passenger side brackets and side bar.

**Remember to periodically check and retighten all nuts and bolts.**