

INSTALLATION INSTRUCTIONS

37129 (1-2-3-4-6-8-9) SIDE BAR FORD F-SERIES SUPER CAB. NEW BODY STYLE 04 - 08

37169 (1-2-3-4-6-8-9) SIDE BAR FORD F-SERIES CREW CAB. NEW BODY STYLE 04 - 08

Parts List:

QTY	(1) Hardware kit (37129 - 37169) including:
(1) Sidebar set Driver & Passenger	(4) 1/2 x 2" hex. head bolts (8) 1/2" flat washers (4) 1/2" lock washers (4) 1/2" lock nuts
(1) Front bracket set Driver & Passenger	(4) 3/8 x 1" carriage head bolt. (4) 3/8 x 1" hex. head bolts
(2) Rear brackets Driver & Passenger	(2) 5/16" lock washers (2) 5/16" hex nut.
(1) Auxiliary front bracket set Driver & Passenger	(4) 3/8" lock washers (10) 3/8" flat washers (4) 3/8" lock nuts
(2) 5/16" Bolt plate	
(2) fixation Bracket	

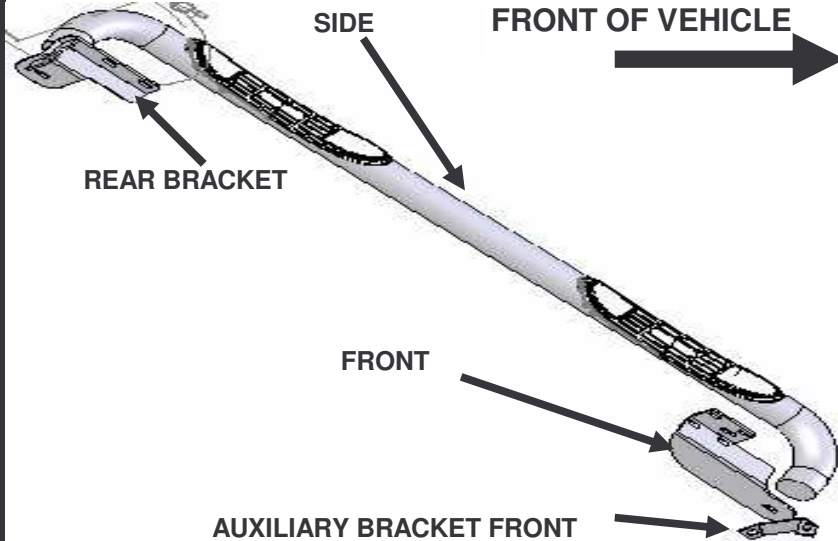
(4) 3/8" Clip nut.
(2) Roun vynil gasket

Tools requiered:

3/4" Socket	9/16" Socket	1/2" Socket	Ratchet extension
3/4" Wrench	9/16" Wrench	1/2" Wrench	Ratchet

Instructions:

Aproximated installation time: 35 min.



1. Read and understand instructions completely before beginning installation.
2. To install front mounting bracket, locate and remove the plastic cover on the rocker panel. Photo 1 y 2. Then intruduce into the upper holes a 3/8" clip nut in each hole and repeat in the other side of the vehicle.



FRONT BRACKET

PHOTO 1

To install front bracket remove this plastic cover . front driver side image.



P
H
O
T
O
2

Upper holes to introduce clip nuts front driver side image.

Cleaning and care instructions:

Protect the finish with a non-abrasive automotive wax, (e.g. Pure Carnauba) on a regular basis. The use of any soap, polish, or wax that contains an abrasive is detrimental to the finish, as the compounds scratch the finish and cause corrosion.

Design:

Quality:

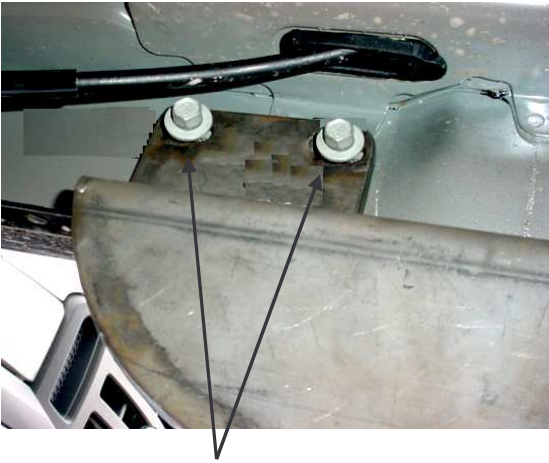
INSTALLATION INSTRUCTIONS

37129 (1-2-3-4-6-8-9) SIDE BAR FORD F-SERIES SUPER CAB. NEW BODY STYLE 04 - 08

37169 (1-2-3-4-6-8-9) SIDE BAR FORD F-SERIES CREW CAB. NEW BODY STYLE 04 - 08

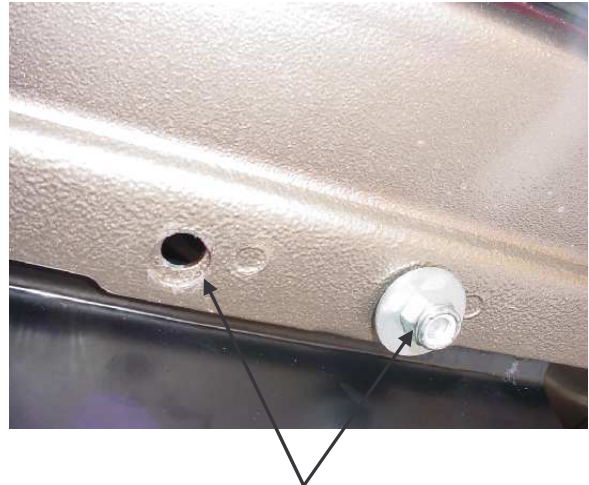
3. Place the front mounting bracket onto each clip nut using (1) 3/8" hex head bolt, (1) 3/8" flat washer, (1) 3/8" lock washer. **Photo 3.** leave loose. In each of the inferior holes on the rocker panel fix the bracket using (1) 3/8" carriage head bolt (1) 3/8" flat washer, (1) 3/8" lock washer. (1) 3/8" lock nut. **Photo 4.** leave loose. Repeat for the oposite side.

PHOTO 3



3/8" hex head bolt, flat washer and lock washer.
Front driver side.

PHOTO 4



Inferior holes to place the front bracket on the rocker panel of the vehicle fix with 3/8" carriage head bolt, flat washer, lock washer and lock nut

4. To install the auxiliary brackets find a rectangle hole located up from the front bracket place, insert the 5/16" bolt plate in the hole with the bolt outside. Place the auxiliary bracket in the bolt plate and fix with: (1) 3/8" Flat washer, (1) 5/16" lock washer, (1) 5/16" hex nut. **Photo 5.** leave loose. Repeat for the oposite side.

PHOTO 5



Rectangle hole located up from the front bracket place.
Front driver side.

Cleaning and care instructions:

Protect the finish with a non-abrasive automotive wax, (e.g. Pure Carnauba) on a regular basis. The use of any soap, polish, or wax that contains an abrasive is detrimental to the finish, as the compounds scratch the finish and cause corrosion.

Revisado 10/01/2008

G:\Usuarios\Diseño\Instructivos PDF\37S\37129 - 37169 - E.Pdf

Design:

Quality:

INSTALLATION INSTRUCTIONS

37129 (1-2-3-4-6-8-9) SIDE BAR FORD F-SERIES SUPER CAB. NEW BODY STYLE 04 - 08

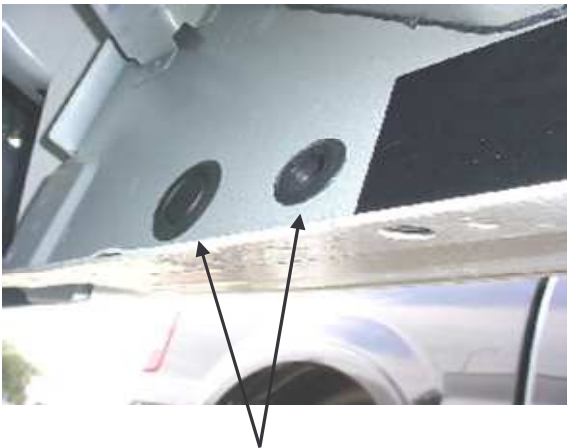
37169 (1-2-3-4-6-8-9) SIDE BAR FORD F-SERIES CREW CAB. NEW BODY STYLE 04 - 08

REAR BRACKET

5. To install the rear bracket locate and remove the rounded plastics on the rocker panel. **Photo 6.** Insert the fixation bracket in the hole and place it as shown in the photo **7 & 8.** Put a vinyl gasket in the bolt to avoid the bracket falls inside the panel. Repeat for the opposite side.

6. Place the rear mounting bracket and attach with: (1) 1/2" flat washer, (1) 1/2" lock nut, in each bolt. Repeat for the opposite side. Leave loose.

PHOTO 6



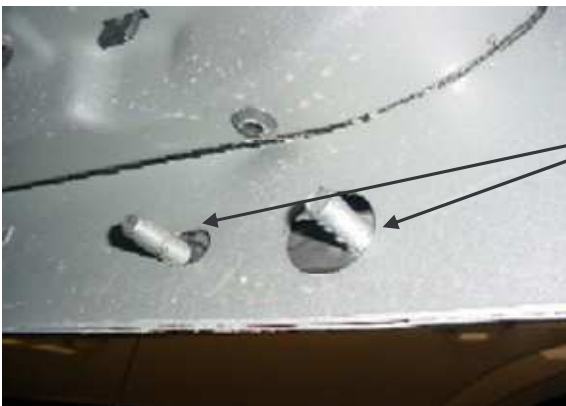
Rounded plastics to remove, to place the fixation bracket.
Rear driver side.

PHOTO 7



Right way to install the fixation bracket.
Rear driver side.

PHOTO 8



Fixation bracket installed, choose any bolt and put a vinyl gasket to avoid the bracket falls inside the panel.
Rear driver side.

7. Place the side bar in the front and rear brackets, and attach with: (1) 1/2 x 2" hex head bolt, (1) 1/2" flat washers, (1) 1/2" lock washers. for each bracket. Leave loose. **Note: In the front side fix at the same time the auxiliary and the front bracket.** Repeat for the opposite side.

8. Make any final alignment and tighten all bolts. Repeat for the opposite side.

9. You may need to retighten all bolts periodically.

Cleaning and care instructions:

Protect the finish with a non-abrasive automotive wax, (e.g. Pure Carnauba) on a regular basis. The use of any soap, polish, or wax that contains an abrasive is detrimental to the finish, as the compounds scratch the finish and cause corrosion.

Revisado 10/01/2008

G:\Usuarios\Diseño\Instructivos PDF\37S\37129 - 37169 - E.Pdf

Design:

Quality: