

# INSTALLATION INSTRUCTIONS

**37129 (1-2-3-4-6-8-9) SIDE BAR FORD F-SERIES SUPER CAB. NEW BODY STYLE 04 - 08**

**37169 (1-2-3-4-6-8-9) SIDE BAR FORD F-SERIES CREW CAB. NEW BODY STYLE 04 - 08**

**Parts List:**

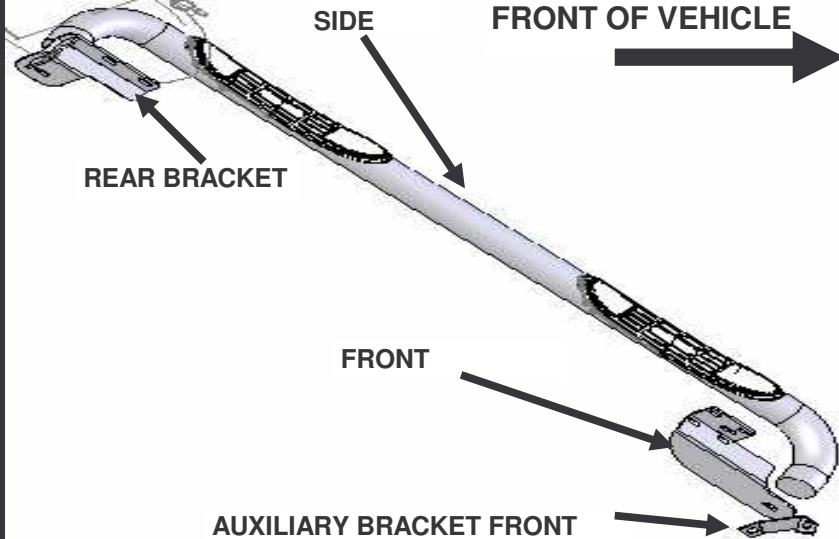
QTY	(1) Hardware kit ( 37129 - 37169) including:
( 1 ) Sidebar set Driver & Passenger	( 4 ) 1/2 x 2" hex. head bolts ( 4 ) 3/8" Clip nut.
( 1 ) Front bracket set Driver & Passenger	( 8 ) 1/2" flat washers ( 2 ) Roun vynil gasket
( 2 ) Rear brackets Driver & Passenger	( 4 ) 1/2" lock washers ( 4 ) 1/2" lock nuts
( 1 ) Auxiliary front bracket set Driver & Passenger	( 4 ) 3/8 x 1" carriage head bolt. ( 4 ) 3/8 x 1" hex. head bolts
( 2 ) 5/16" Bolt plate	( 2 ) 5/16" lock washers
( 2 ) fixation Bracket	( 2 ) 5/16" hex nut. ( 4 ) 3/8" lock washers
	( 10 ) 3/8" flat washers
	( 4 ) 3/8" lock nuts

**Tools requiered:**

3/4" Socket	9/16" Socket	1/2" Socket	Ratchet extension
3/4" Wrench	9/16" Wrench	1/2" Wrench	Ratchet

**Instructions:**

**Aproximated installation time: 35 min.**



1. Read and understand instructions completely before beginning installation.
2. To install front mounting bracket, locate and remove the plastic cover on the rocker panel. Photo 1 y 2. Then intruduce into the upper holes a 3/8" clip nut in each hole and repeat in the other side of the vehicle.



**FRONT BRACKET**

PHOTO 1

To install front bracket remove this plastic cover . front driver side image.



P  
H  
O  
T  
O  
2

Upper holes to introduce clip nuts front driver side image.

**Cleaning and care instructions:**

Protect the finish with a non-abrasive automotive wax, (e.g. Pure Carnauba) on a regular basis. The use of any soap, polish, or wax that contains an abrasive is detrimental to the finish, as the compounds scratch the finish and cause corrosion.

Design:

Quality:

Revisado 10/01/2008

G:\Usuarios\Diseño\Instructivos PDF\37S\37129 - 37169 - E.Pdf

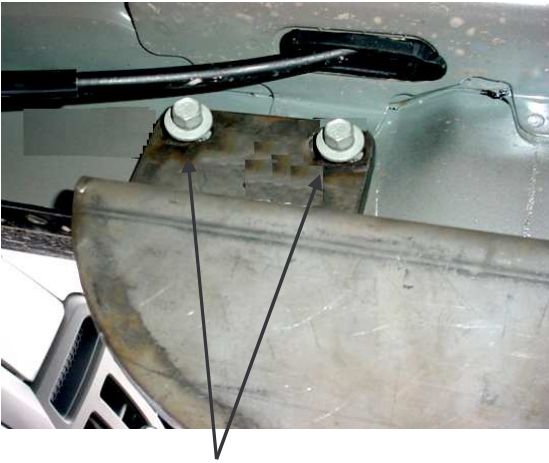
## INSTALLATION INSTRUCTIONS

**37129 (1-2-3-4-6-8-9) SIDE BAR FORD F-SERIES SUPER CAB. NEW BODY STYLE 04 - 08**

**37169 (1-2-3-4-6-8-9) SIDE BAR FORD F-SERIES CREW CAB. NEW BODY STYLE 04 - 08**

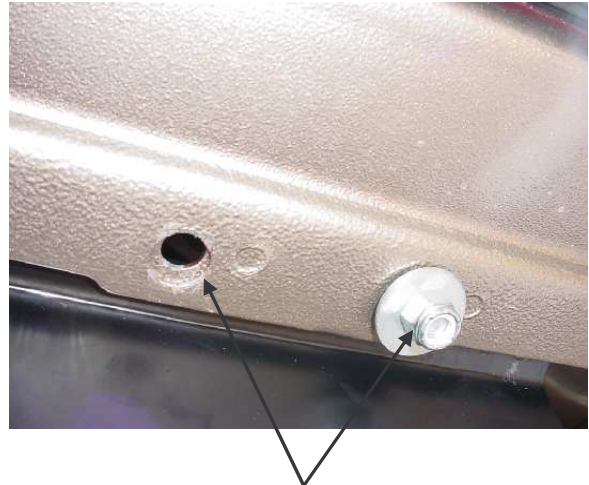
3. Place the front mounting bracket onto each clip nut using (1) 3/8" hex head bolt, (1) 3/8" flat washer, (1) 3/8" lock washer. **Photo 3.** leave loose. In each of the inferior holes on the rocker panel fix the bracket using (1) 3/8" carriage head bolt (1) 3/8" flat washer, (1) 3/8" lock washer. (1) 3/8" lock nut. **Photo 4.** leave loose. Repeat for the oposite side.

PHOTO 3



3/8" hex head bolt, flat washer and lock washer.  
Front driver side.

PHOTO 4



Inferior holes to place the front bracket on the rocker panel of the vehicle fix with 3/8" carriage head bolt, flat washer, lock washer and lock nut

4. To install the auxiliary brackets find a rectangle hole located up from the front bracket place, insert the 5/16" bolt plate in the hole with the bolt outside. Place the auxiliary bracket in the bolt plate and fix with: (1) 3/8" Flat washer, (1) 5/16" lock washer, (1) 5/16" hex nut. **Photo 5.** leave loose. Repeat for the oposite side.

PHOTO 5



Rectangle hole located up from the front bracket place.  
Front driver side.

### Cleaning and care instructions:

Protect the finish with a non-abrasive automotive wax, (e.g. Pure Carnauba) on a regular basis. The use of any soap, polish, or wax that contains an abrasive is detrimental to the finish, as the compounds scratch the finish and cause corrosion.

Revisado 10/01/2008

G:\Usuarios\Diseño\Instructivos PDF\37S\37129 - 37169 - E.Pdf

Design:

Quality:

## INSTALLATION INSTRUCTIONS

**37129 (1-2-3-4-6-8-9) SIDE BAR FORD F-SERIES SUPER CAB. NEW BODY STYLE 04 - 08**

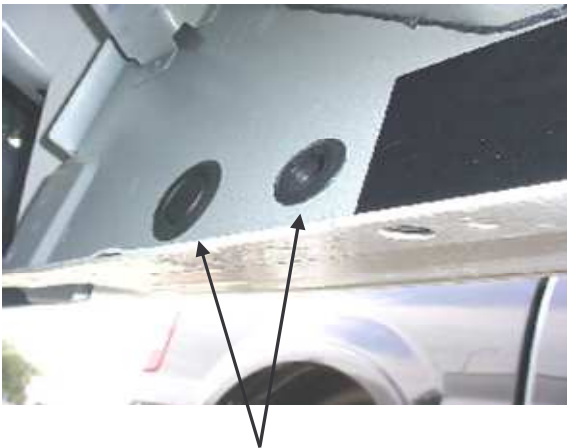
**37169 (1-2-3-4-6-8-9) SIDE BAR FORD F-SERIES CREW CAB. NEW BODY STYLE 04 - 08**

### REAR BRACKET

5. To install the rear bracket locate and remove the rounded plastics on the rocker panel. **Photo 6.** Insert the fixation bracket in the hole and place it as shown in the photo **7 & 8.** Put a vinyl gasket in the bolt to avoid the bracket falls inside the panel. Repeat for the opposite side.

6. Place the rear mounting bracket and attach with: ( 1 ) 1/2" flat washer, ( 1 ) 1/2" lock nut, in each bolt. Repeat for the opposite side. Leave loose.

PHOTO 6



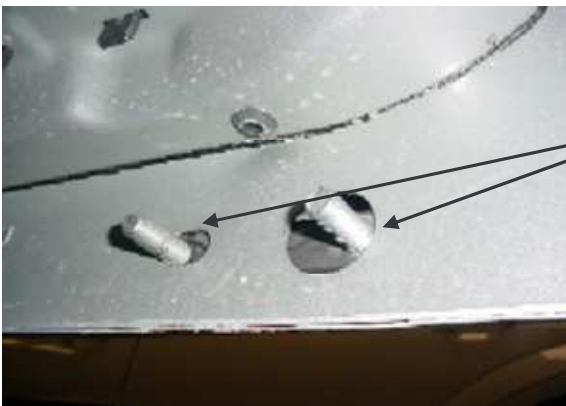
Rounded plastics to remove, to place the fixation bracket.  
Rear driver side.

PHOTO 7



Right way to install the fixation bracket.  
Rear driver side.

PHOTO 8



Fixation bracket installed, choose any bolt and put a vinyl gasket to avoid the bracket falls inside the panel.  
Rear driver side.

7. Place the side bar in the front and rear brackets, and attach with: ( 1 ) 1/2 x 2" hex head bolt, ( 1 ) 1/2" flat washers, ( 1 ) 1/2" lock washers. for each bracket. Leave loose. **Note: In the front side fix at the same time the auxiliary and the front bracket.** Repeat for the opposite side.

8. Make any final alignment and tighten all bolts. Repeat for the opposite side.

9. You may need to retighten all bolts periodically.

#### Cleaning and care instructions:

Protect the finish with a non-abrasive automotive wax, (e.g. Pure Carnauba) on a regular basis. The use of any soap, polish, or wax that contains an abrasive is detrimental to the finish, as the compounds scratch the finish and cause corrosion.

Revisado 10/01/2008

G:\Usuarios\Diseño\Instructivos PDF\37S\37129 - 37169 - E.Pdf

Design:

Quality: