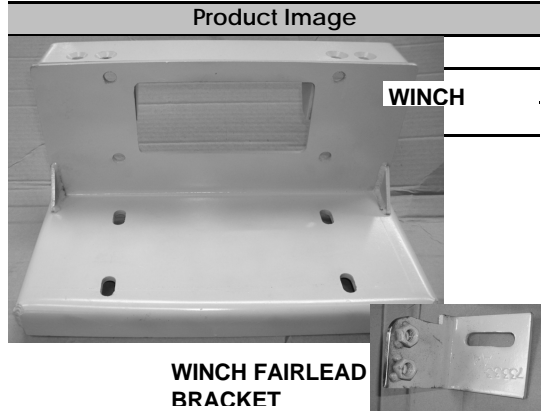


Parts List				
Item	Qty.	Code	Description	Max. Torque
1	1 pc	15001T	Winch tray	
	1 Kit	BRK-73333WK	Brackets Kit	
2	2 pc		Winch fairlead brackets	
	1 Kit	KTE-73333WK	Hardware Kit	
4	8 pc		1/2 X 1 1/2" Hex head bolt	
5	4 pc		1/2 X 1 1/2" Flat head bolt	
5	4 pc		1/2" Hex nut	
6	8 pc		1/2" Lock washer	

Required Tools (Not included)	
Qty.	Description
1	Ratchet
1	19mm Socket
1	19mm Wrench
1	5/16" Allen wrench

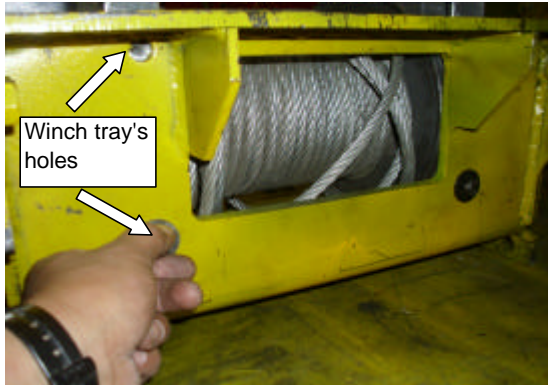


### Instructions

1. Before beginning the installation, please read all directions carefully and verify that all necessary hardware is accounted for. If any parts are missing, stop the installation and contact your distributor immediately.
2. To maintain and care this product keep it clean and do not use abrasive cleaners or polish waxes. We recommend to use only non-abrasive automotive wax such as pure carnauba to avoid scratches and rust.
3. The approximate installation time is 120 min. by 4 persons.
4. Identify the bracket shown in the illustrations
5. To install the product it is necessary to remove the bumper replacement.

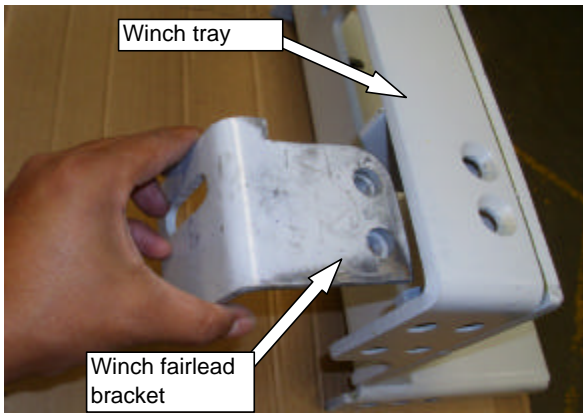


**PICTURE 1**



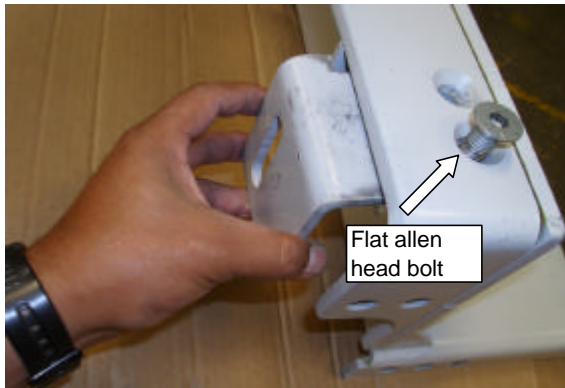
6. Locate the holes in the winch tray at rear part where winch will be installed. Picture 1. Place the winch and align with the holes. Attach using ( 4 ) 3/8 x 1 1/2" hex head bolts, ( 4 ) 3/8" lock washer and ( 2 ) 3/8" flat washer only for lower holes (hardware not included). Tighten bolts to 30 lbs/ft.

**PICTURE 2**

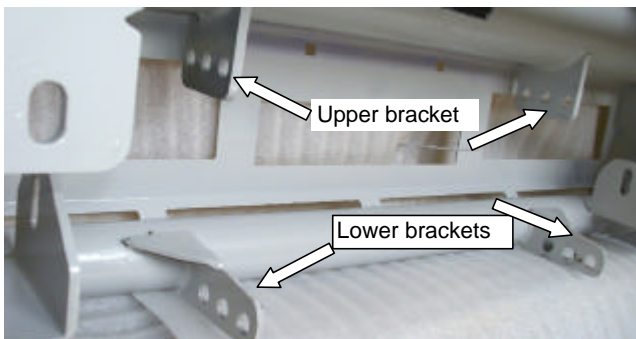


7. Place the winch fairlead bracket behind the bumper replacement. Attach to the winch fairlead using ( 4 ) 1/2 x 1 1/2" flat head bolts. Picture 2 & 3.

**PICTURE 3**



**PICTURE 4**



8. Identify the welded brackets (upper & lower) in the backside of the bumper replacement. There will be installed the winch tray. Picture 4.

**PICTURE 5**



9. Align winch tray's holes with upper bracket's holes; attach using ( 4 ) 1/2 x 1 1/2" hex head bolts with 1/2" flat washers. Leave loose. **Picture 5.**

**PICTURE 6**



10. Align winch tray's holes with lower bracket's holes; attach using ( 4 ) 1/2 x 1 1/2" hex head bolts with 1/2" flat washers. Leave loose. **Picture 6.**

**PICTURE 7**



11. Align winch fairlead holes with the winch fairlead bracket opening. Attach using ( 4 ) 3/8 x 1 1/2" hex head bolts, ( 4 ) 3/8" lock washer and flat washer and ( 4 ) 3/8" hex nuts (hardware not included). **Picture 7.**

12. Make any final adjustments, align the product and tighten the bolts.

You may need to re-tighten the bolts periodically.

