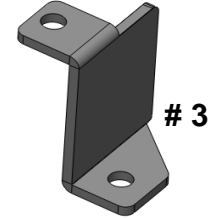


**Installation Instructions**  
**GRILLE GUARD #14174T**  
**2016 Chevrolet Silverado 1500 2/4WD**  
**(exclude models with driver alert package )**

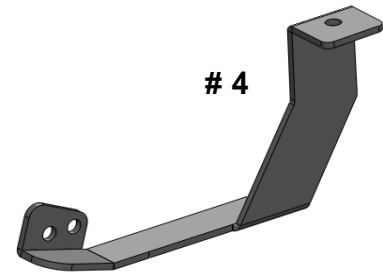
Do not attempt to install this product on any vehicle other than the one listed above!

**Parts List**

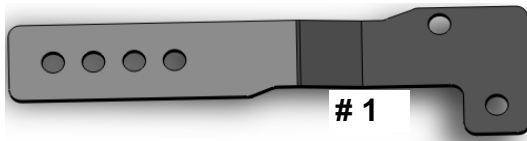
Item	Qty.	Part #	Description	Torque
1	1	503764AA	Driver side upper bracket	
2	1	503764BA	Passenger side upper bracket	
3	1	525764CA	Driver side auxiliary bracket	
4	1	503764CA	Driver side lower bracket	
5	1		Passenger side lower bracket	
6	4		1/2" rod bolt	70 Ft. Lbs.
7	2		1/2" T-Bolt	70 Ft. Lbs.
8	7		1/2 x 1 1/2" Hex bolt	70 Ft. Lbs.
9	13		1/2" Flat washer	
10	13		1/2" Lock washer	
11	13		1/2" Hex nut	70 Ft. Lbs.



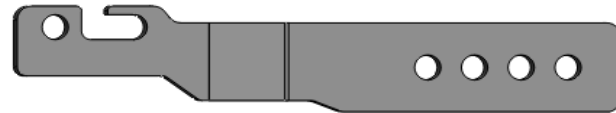
# 3



# 4



# 1



# 2

**Tool Required:**

- 18mm, 7/16", 1/2", 9/16" & 3/4" Sockets
- 18mm, 7/16", 1/2", 9/16" & 3/4" Wrench
- Phillips Screwdriver
- Ratchet & Ratchet Extension
- Measure Tape

**Approximate installation time: 30 min.**

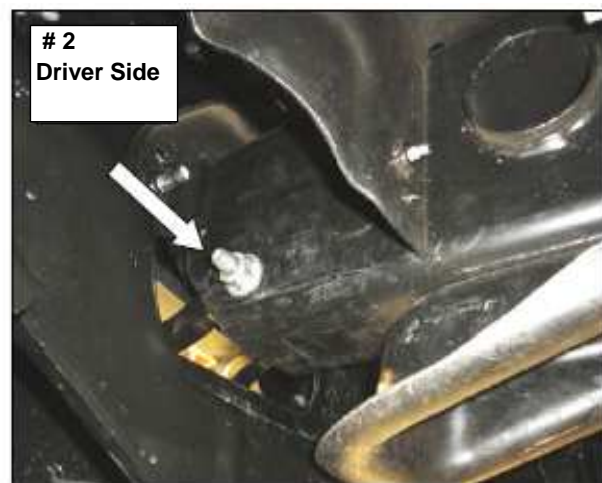
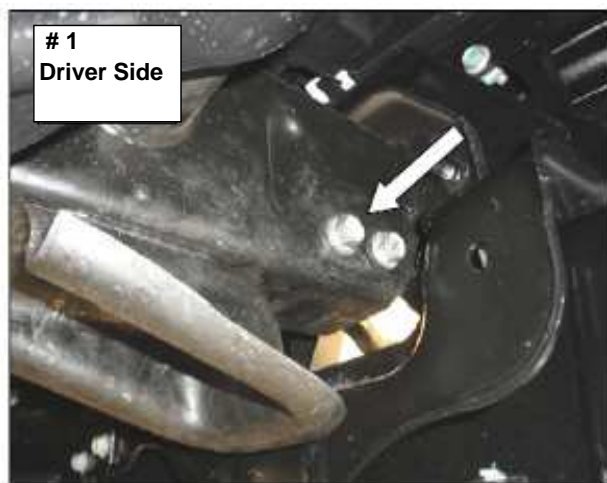
Read the installation instructions completely and verify that all of the parts listed are accounted for.

**Note:**

if your vehicle is not equipped with tow hooks attach the upper brackets and. auxiliary bracket to the frame using the supplied 1/2" rod bolts, 1/2" flat washer of 1/2, 1/2" lock washers and 1/2" hex nuts.

Protect the plastic bumper cover prior to the installation.

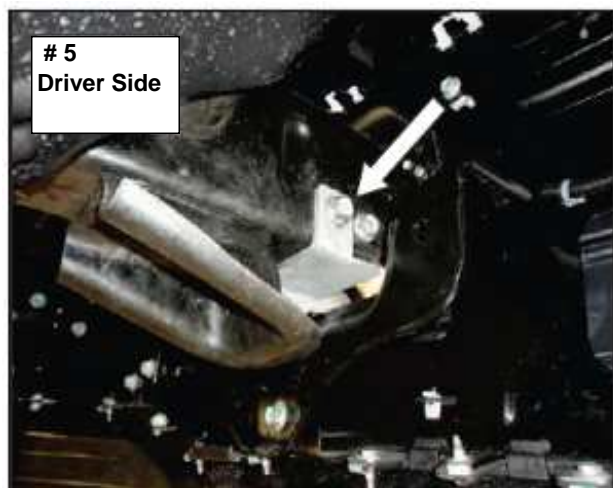
**Step-1** Beginning with the driver side, remove the tow hook rear bolt, nut from the front bolt, ( **Photo 1 & 2** ) and the foam trim panel from the tow hook opening.



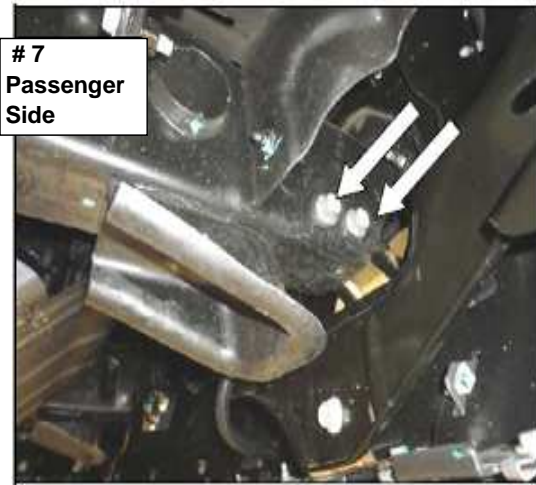
**Step-2** from the tow hook opening, slide the vehicle attachment end of the driver side upper bracket under the frame, rotate the bracket and position upper attachment hole in the bracket over the shank of the front tow hook bolt and reinstall the nut, ( **Photo 3 & 4** ).



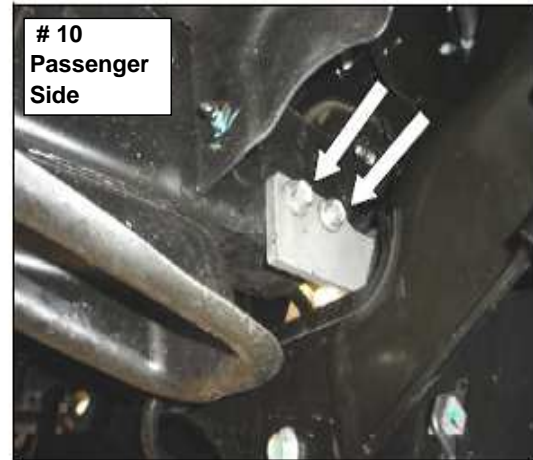
**Step- 3** Attach the driver side auxiliary bracket to the side of the frame using the tow hook rear bolt and to the lower hole in the upper bracket using ( 1 ) 1/2 x 1 1/2" hex bolt, ( 1 ) 1/2" flat washer, ( 1 ) 1/2" lock washer and ( 1 ) 1/2" hex nut, ( **Photo 5 & 6** )



**Step – 4** Passenger side, remove the tow hook front nut and bolt, rear bolt, (Photo 7 & 8) and the foam trim panel from the tow hook opening.



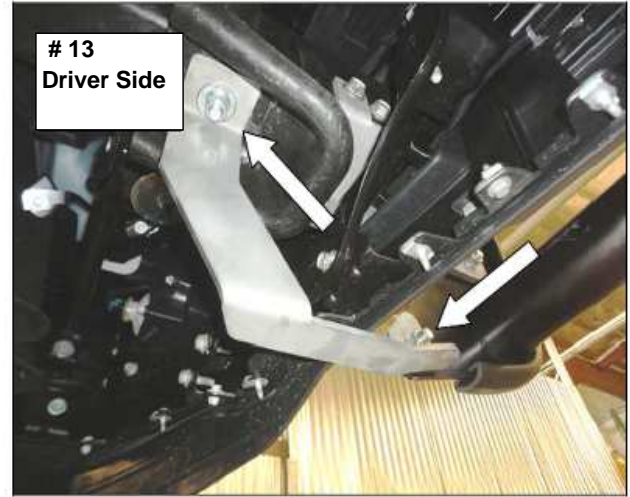
**Step -5** From the tow hook opening, side the vehicle attachment end of the passenger side upper bracket under the frame, rotate the bracket and align the holes in the bracket with the holes in the side of the frame and reinstall the tow hook front bolt and nut, then the rear bolt, ( Foto 9 & 10 ).



**Step - 6** Identify the holes to use for your vehicle ( Photo 11 ) With assistance, position and attach the Grille Guard to the outside of each upper bracket using ( 2 ) 1/2 x 1 1/2" hex bolt, ( 2 ) 1/2" Flat washers, ( 2 ) 1/2" lock washers, ( 2 ) 1/2" hex nuts. Leave the nuts and bolts loose for final adjustment.



**Step - 7** Locate the hole in the bottom of the frame and install (1) 1/2" t-bolt, ( **Photo 12**). Attach the driver side lower bracket to the frame using the T-Bolt, (1) 1/2" flat washer, (1) 1/2" lock washer and (1) 1/2" hex nut, and to the defender using (1) 1/2" x 1 1/2" hex bolt, (1) 1/2" flat washer, (1) 1/2" lock washer and (1) 1/2" hex nut, (**Photo 13**). Repeat to install the passenger side lower bracket.



**Step - 8** Align the Grille Guard with the vehicle and tighten all factory and supplied nuts and bolts.

Remember to check and retighten the nuts and bolts every six months.

