

DOMINATOR SERIES SIDESTEPS

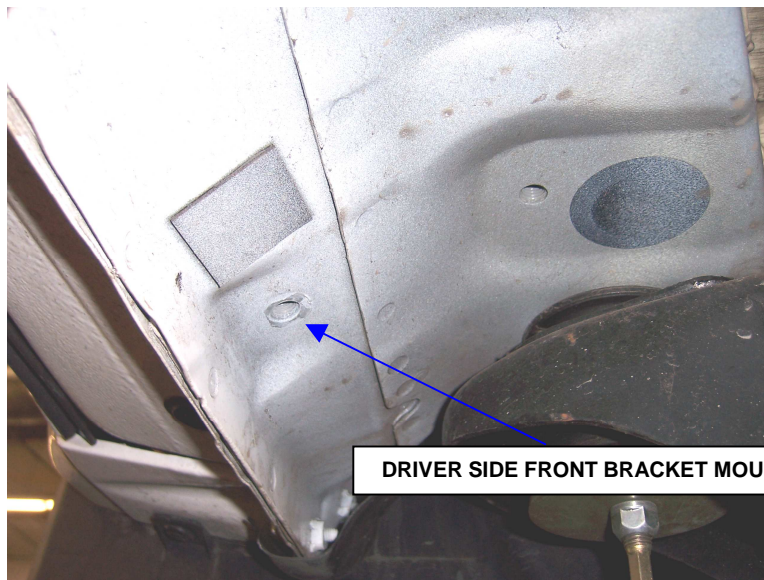
ASSEMBLY & INSTALLATION INSTRUCTIONS
PART NO. D24414 / 04-08 TOYOTA TUNDRA DOUBLE CAB

Do not attempt to install this product on any vehicle other than the one it is designed for and listed above!

<u>QTY</u>	<u>PARTS DESCRIPTION</u>	<u>QTY</u>	<u>PARTS DESCRIPTION</u>
5	M8 X 25MM HEX BOLTS	1	TO6D DRIVER SIDE FRONT BRACKET
4	M8 HEX NUTS	2	TO3D DRIVER SIDE CENTER & REAR BRACKET
9	5/16" FLAT WASHERS	1	TO6P PASSENGER SIDE FRONT BRACKET
12	3/8" X 1 1/4" HEX BOLTS	2	TO3P PASSENGER SIDE CENTER & REAR BRACKET
24	3/8" FLAT WASHERS	1	D24414P PASSENGER SIDESTEP
12	3/8" LOCK WASHERS	1	D24414D DRIVER SIDESTEP
12	3/8" HEX NUTS		

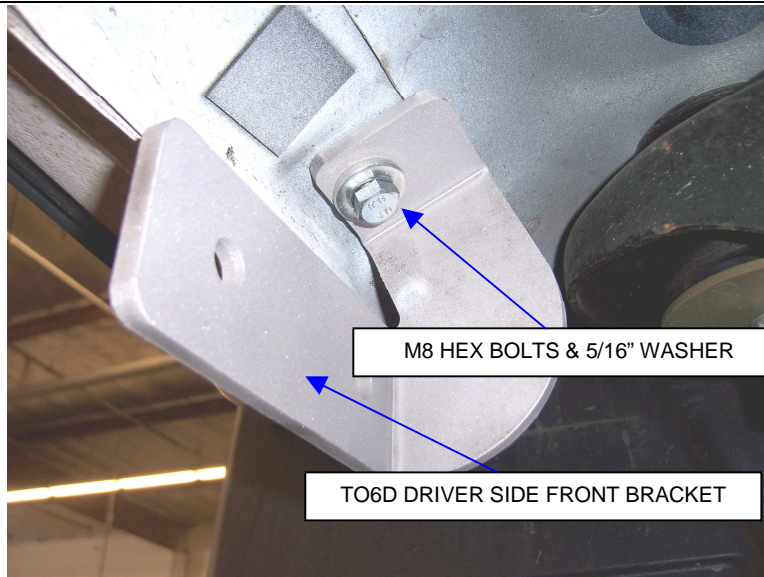
INSTALLATION INSTRUCTIONS

STEP 1. Read the instructions completely before you begin the installation.



DRIVER SIDE FRONT BRACKET MOUNTING POINT

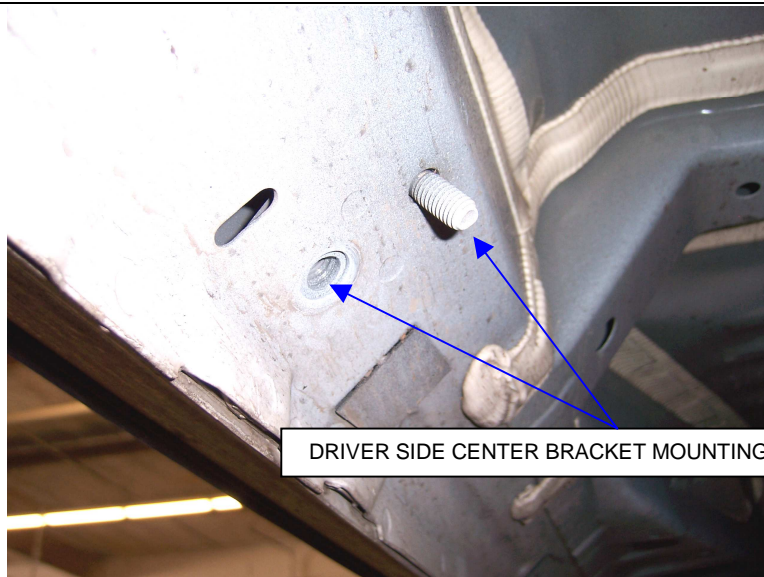
STEP 2. This installation uses (3) brackets per side. Begin by installing the driver side front bracket. Locate the threaded hole in the underside body panel.



M8 HEX BOLTS & 5/16" WASHER

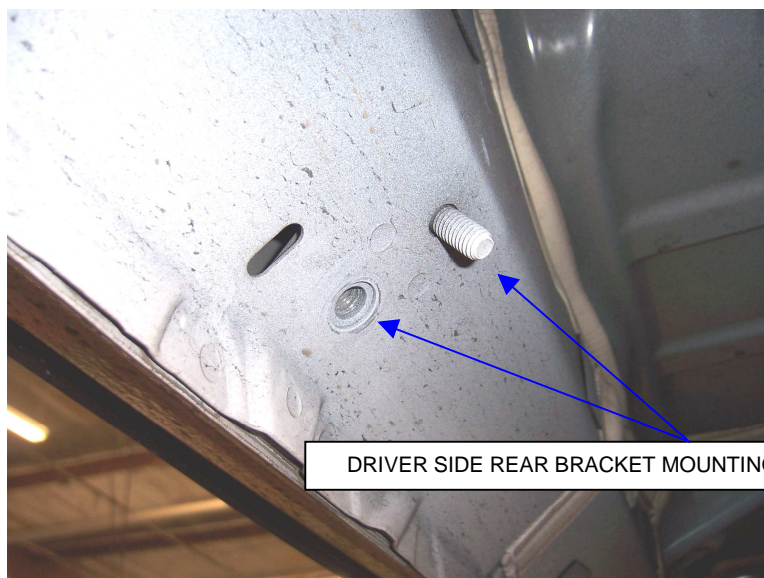
TO6D DRIVER SIDE FRONT BRACKET

STEP 3. Loosely attach TO6D front bracket to the body panel using the M8 hex bolt, and 5/16" washer.

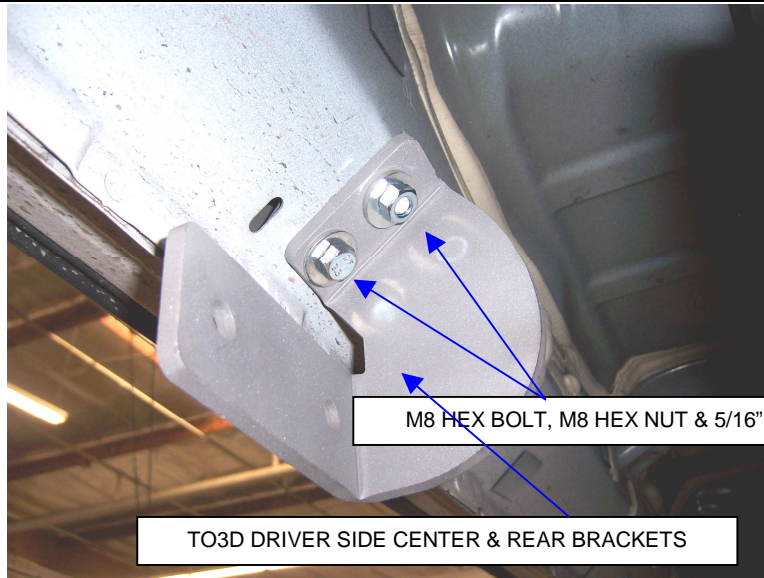


DRIVER SIDE CENTER BRACKET MOUNTING POINTS

STEP 4. Locate the mounting points in the body panel, for the center and rear mounting brackets.



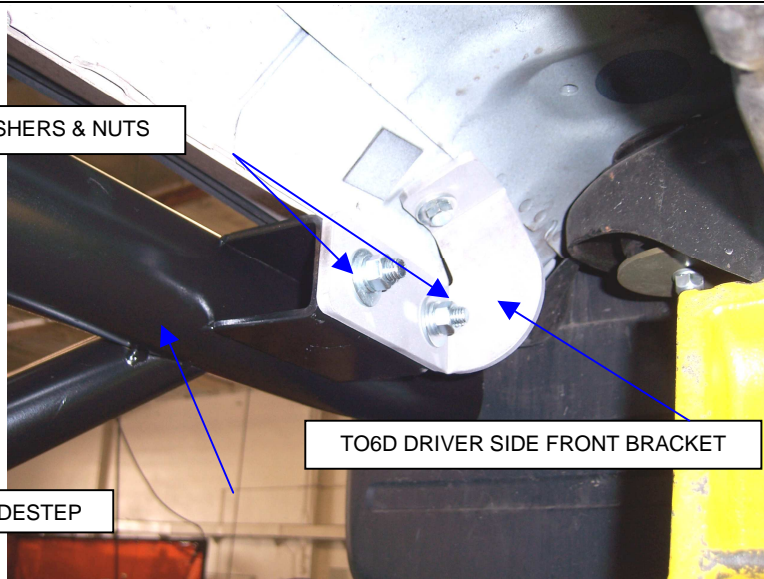
DRIVER SIDE REAR BRACKET MOUNTING POINTS



M8 HEX BOLT, M8 HEX NUT & 5/16" WASHERS

TO3D DRIVER SIDE CENTER & REAR BRACKETS

STEP 5. Loosely attach the TO3D center and rear brackets, to the body panel using the M8 hex bolts, M8 hex nuts and 5/16" washers.



3/8" X 1 1/4" HEX BOLTS, WASHERS & NUTS

TO6D DRIVER SIDE FRONT BRACKET

D24414D SIDESTEP

STEP 6. Attach D24414D driver side sidesteps to the brackets using the 3/8" x 1 1/4" hex bolts, washers and nuts.

STEP 7. Align sidestep with the body, and then tighten all bracket and sidestep nuts and bolts.

STEP 8. Repeat the above steps to install the passenger side brackets and sidestep.