

DOMINATOR II

DOMINATOR SERIES SIDESTEPS

ASSEMBLY & INSTALLATION INSTRUCTIONS

PART NO. D24150 04-08 FORD F-150 SUPER CREW

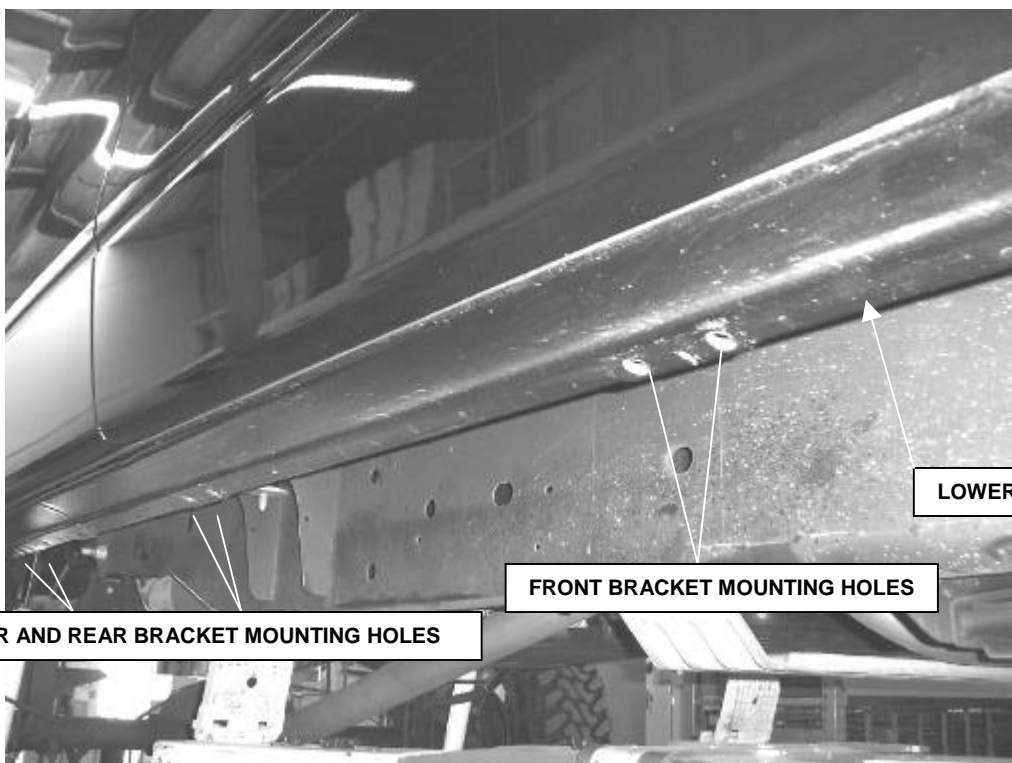
Do not attempt to install this product on any vehicle other than the one it is designed for and listed above!

<u>QTY</u>	<u>PARTS DESCRIPTION</u>	<u>QTY</u>	<u>PARTS DESCRIPTION</u>
48	3/8" FLAT WASHERS	6	FO4 MOUNTING BRACKETS
24	3/8" HEX NUTS	1	D24150P PASSENGER SIDESTEP
24	3/8" x 1 " HEX BOLTS	1	D24150D DRIVER SIDESTEP
24	3/8" LOCK WASHERS		

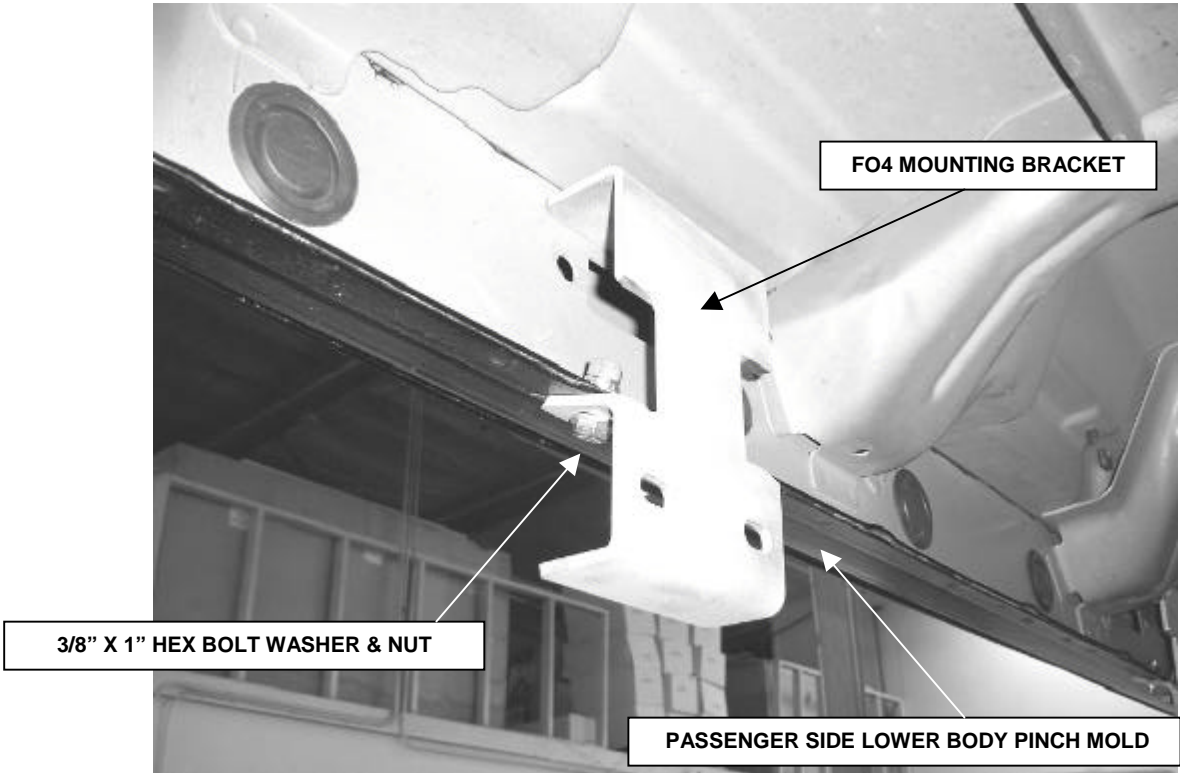
INSTALLATION INSTRUCTIONS

STEP 1. Read the instructions completely before you begin the installation.

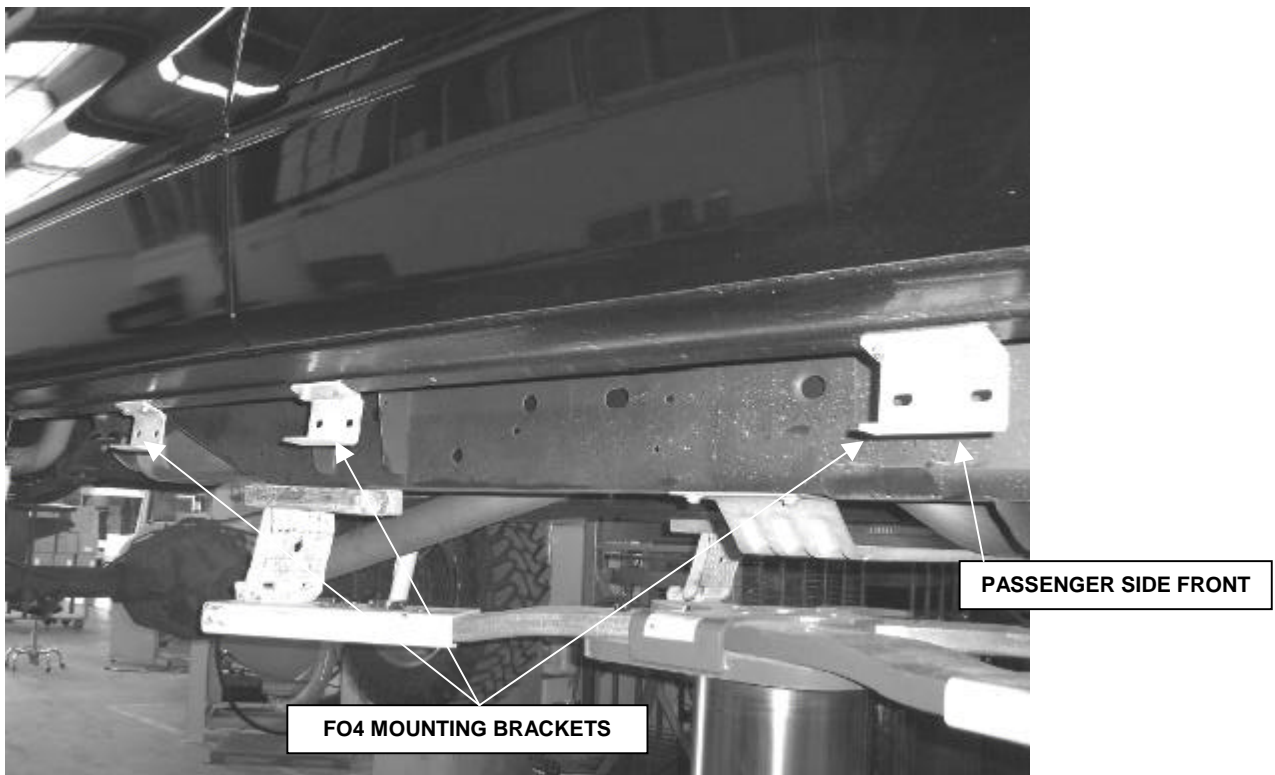
If the vehicle is equipped with factory running boards, remove boards and fasteners.

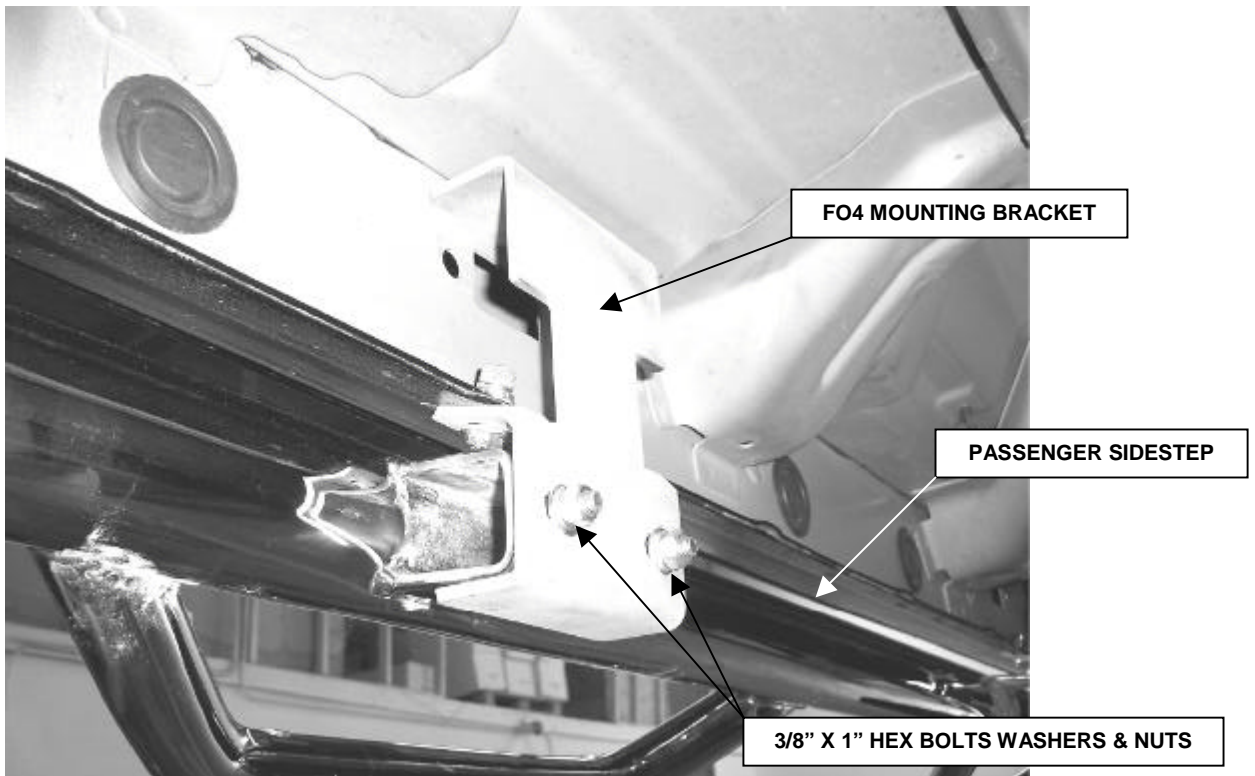


STEP 2. This installation uses three mounting brackets per side. Beginning with the passenger side, locate the six holes in the lower body pinch mold.



STEP 3. Loosely attach the flange of the mounting brackets to the bottom of the lower body pinch mold using the 3/8" x 1" hex bolts, washers, and nuts as shown.





STEP 4. Position the passenger sidestep up to the mounting brackets and loosely attach it to the brackets using the 3/8" x 1" hex bolts, washers and nuts as shown.



STEP 5. Align sidestep with the body, and then tighten all mounting bracket and sidestep nuts and bolts.

STEP 6. Repeat the above steps to install the driver side mounting brackets and sidestep.