

INSTALLATION INSTRUCTIONS

DOMINATOR D2 SIDE STEPS

DODGE RAM 2500, 3500 CREW CAB PICKUP 2/4WD

PART # D24105 (T-PS)



PACKING LIST

QTY PART DESCRIPTION

24	3/8" X 1 1/4" HEX BOLTS
42	3/8" FLAT WASHERS
30	3/8" LOCK WASHERS
18	3/8" HEX NUTS

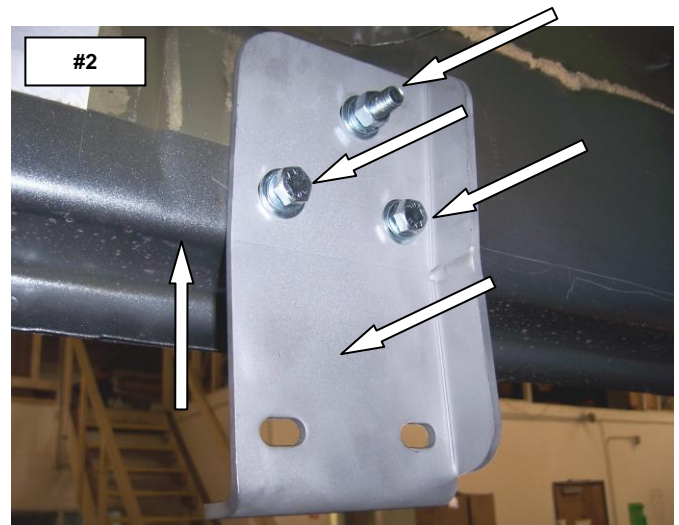
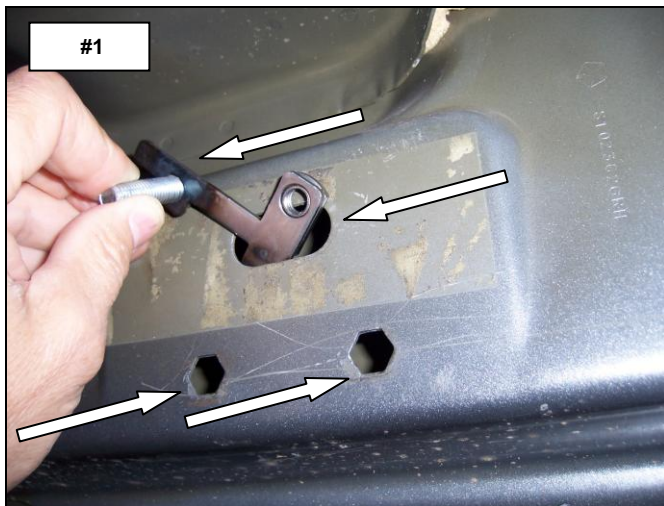
QTY PART DESCRIPTION

6	BA372240 T-PLATE
6	D07 SIDE STEP MOUNTING BRACKETS
1	D24107P PASSENGER SIDE STEP
1	D24107D DRIVER SIDE STEP

INSTALLATION INSTRUCTIONS

READ THE INSTRUCTIONS COMPLETELY BEFORE YOU BEGIN THE INSTALLATION

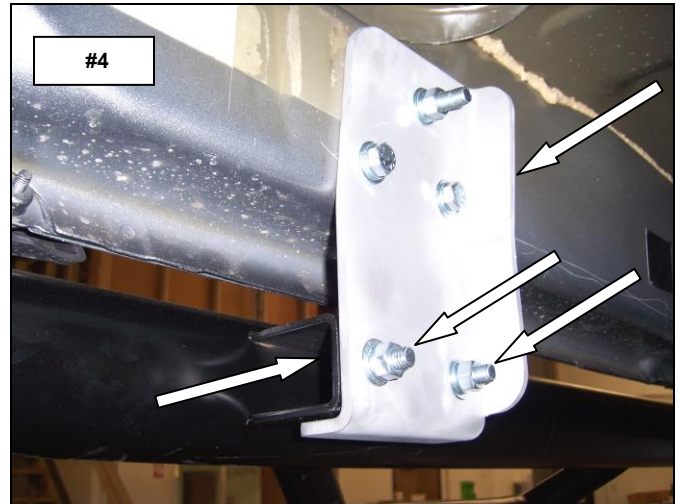
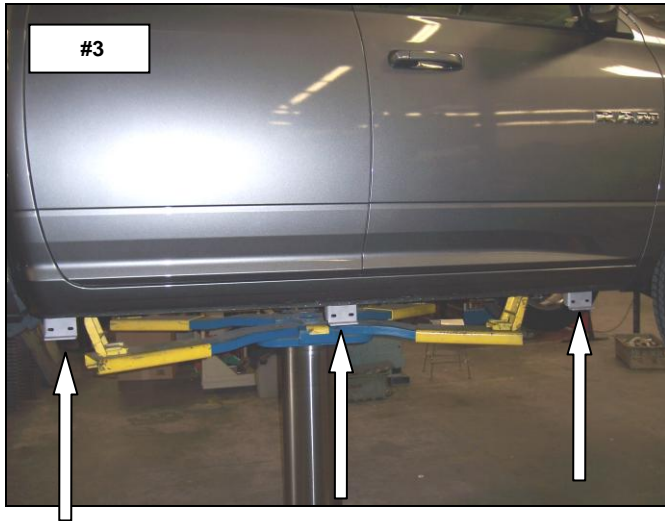
STEP-1 THIS INSTALLATION USES (3) MOUNTING BRACKETS PER SIDE. BEGIN BY INSTALLING THE SIDE STEP MOUNTING BRACKETS ON THE PASSENGER SIDE OF THE VEHICLE. LOCATE THE (2) HEXAGON SHAPED AND OBLONG HOLE IN THE BODY ROCKER PANEL AT THE FRONT OF THE CAB AND REMOVE THE TAPE COVERING THE OBLONG HOLE. INSERT (1) OF THE T-PLATES THROUGH THE OBLONG HOLE IN THE ROCKER PANEL AND POSITION THE PLATE INSIDE THE ROCKER PANEL AS SHOWN. **PHOTO #1**



STEP-2 ATTACH ONE OF THE MOUNTING BRACKETS TO THE BODY PANEL USING THE T-PLATE (2) 3/8" X 1 1/4" HEX BOLTS, (3) 3/8" FLAT WASHERS, (3) 3/8" LOCK WASHERS AND (1) 3/8" HEX NUT. HAND TIGHTEN. REPEAT THE ABOVE PROCEDURE TO INSTALL THE CENTER AND REAR MOUNTING BRACKETS.

PHOTO'S #2 & #3

STEP-3 ATTACH THE PASSENGER SIDE STEP TO EACH OF THE MOUNTING BRACKETS USING (2) 3/8" X 1 1/4" HEX BOLTS, (4) FLAT WASHERS, (2) LOCK WASHERS AND (2) HEX NUTS. **PHOTO #4**



STEP-4 ALIGN THE SIDE STEP WITH THE VEHICLE AND TIGHTEN ALL MOUNTING BRACKET AND SIDE STEP NUTS AND BOLTS. REPEAT THE ABOVE PROCESS TO INSTALL THE DRIVER SIDE BRACKETS AND SIDE STEP.



Review the product package and contents prior to beginning the installation. If you need to place a warranty claim or need assistance, Please contact the Go Rhino customer service team at 1-888-427-4466 during normal business hours Monday thru Friday 7 am to 5 pm PST. You may also email warranty@gorhino.com.