

# GO RHINO!

## PRODUCTS®

### DOMINATOR

### D2

REV 3-12

## DOMINATOR 2 SERIES SIDESTEPS

ASSEMBLY & INSTALLATION INSTRUCTIONS FOR PART NO. D24098  
06-09 DODGE RAM MEGA CAB

**Do not attempt to install this product on any vehicle other than the one it is designed for and listed above!**

<u>QTY</u>	<u>PARTS DESCRIPTION</u>	<u>QTY</u>	<u>PARTS DESCRIPTION</u>
10	3/8" X 1 1/4" T-BOLTS	1	498362 DRIVER FRONT SUPPORT BRACKET
20	3/8" X 1" HEX BOLTS	1	498502 DRIVER REAR BRACKET
30	3/8" HEX NUTS	1	498562 DRIVER REAR SUPPORT BRACKET
30	3/8" LOCK WASHERS	1	498304 PASSENGER FRONT BRACKET
42	3/8" FLAT WASHERS	1	498364 PASSENGER FRONT SUPPORT BRACKET
1	D24098P PASSENGER SIDESTEP	1	498504 PASSENGER REAR BRACKET
1	D24098D DRIVER SIDESTEP	1	498564 PASSENGER REAR SUPPORT BRACKET
1	498302 DRIVER FRONT BRACKET	2	498124 DRIVER & PASSENGER CENTER BRACKETS

### INSTALLATION INSTRUCTIONS

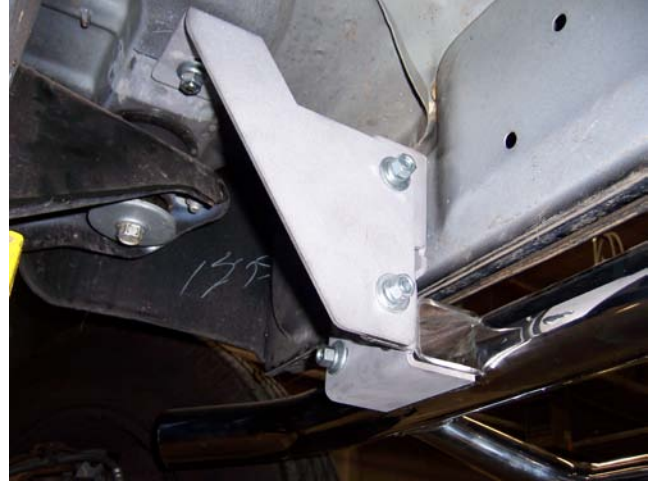
#### **PASSENGER SIDE FRONT MOUNTING AND SUPPORT BRACKET**

**STEP 1.** LOCATE AND REMOVE THE TAPE COVERING THE OBOUNDED HOLE IN THE BODY ROCKER PANEL.



**STEP 2.** ATTACH 498304 PASSENGER FRONT MOUNTING BRACKET TO THE BODY ROCKER PANEL USING THE 3/8" T-BOLT, WASHERS AND HEX NUT AS SHOWN.

**STEP 3.** LOCATE THE SQUARE HOLE IN THE UNDERSIDE OF THE BODY AT THE FRONT OF THE CAB.



**STEP 4.** ATTACH 498364 PASSENGER SIDE FRONT SUPPORT BRACKET TO THE UNDER SIDE OF THE BODY AND TO THE FLANGE OF THE MOUNTING BRACKET USING THE 3/8" T-BOLT, 3/8" X 1" HEX BOLTS, WASHERS AND NUTS AS SHOWN.

---

#### **PASSENGER SIDE CENTER MOUNTING BRACKET**

**STEP 5.** LOCATE AND REMOVE THE TAPE COVERING THE OBOURD HOLE IN THE BODY ROCKER PANEL.

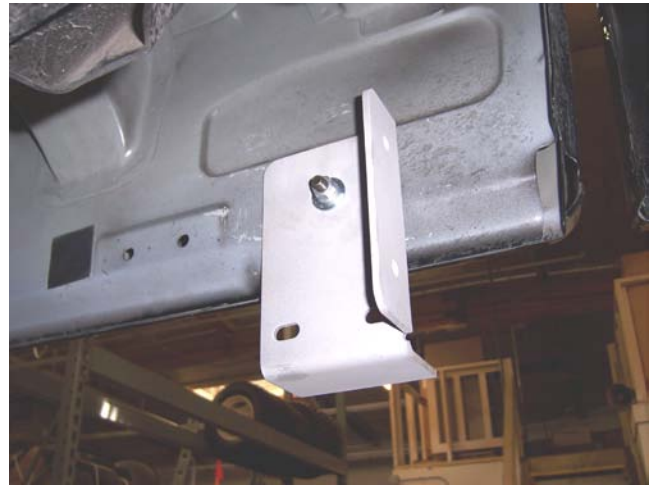


**STEP 6.** ATTACH ONE OF THE 498124 CENTER MOUNTING BRACKETS TO THE BODY ROCKER PANEL USING THE 3/8" T-BOLT, WASHERS AND NUTS AS SHOWN.

---

**PASSENGER SIDE REAR MOUNTING BRACKET AND SUPPORT BRACKET**

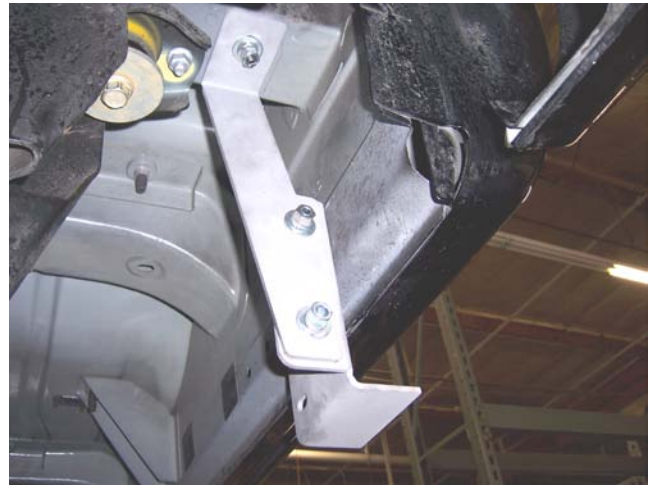
**STEP 7.** LOCATE AND REMOVE THE TAPE COVERING THE OBOUNDED HOLE IN THE BODY ROCKER PANEL.



**STEP 8.** ATTACH 498504 PASSENGER SIDE REAR MOUNTING BRACKET TO THE BODY ROCKER PANEL USING THE 3/8" T-BOLT, WASHERS AND NUTS AS SHOWN.

---

**STEP 9.** LOCATE THE SQUARE HOLE IN THE UNDERSIDE OF THE BODY AT THE REAR OF THE CAB

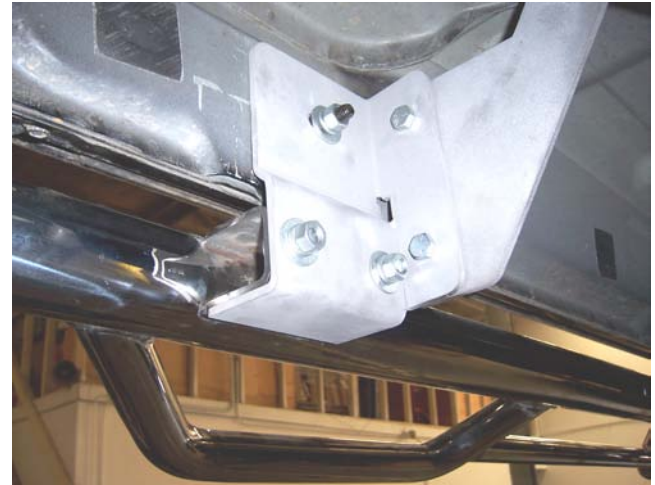


**STEP 10.** ATTACH 498564 PASSENGER SIDE REAR SUPPORT BRACKET TO THE UNDER SIDE OF THE BODY AND TO THE FLANGE OF THE MOUNTING BRACKET USING THE 3/8" T-BOLT, 3/8" X 1" HEX BOLTS, WASHERS AND NUTS AS SHOWN.

---



**STEP 11.** ATTACH D24098 PASSENGER SIDESTEP TO THE MOUNTING BRACKETS USING THE 3/8" X 1" HEX BOLTS, WASHERS AND NUTS.



**STEP 12.** ALIGN THE SIDESTEP WITH THE BODY AND THEN TIGHTEN ALL MOUNTING NUTS AND BOLTS.

**STEP 13.** REPEAT THE ABOVE STEPS FOR THE DRIVER SIDE BRACKETS AND SIDESTEP.

## Features and Benefits:

### Dominator II (one piece)

- Application specific installation brackets make for faster, easier installation
- Patented step and mounting system allow easier, safer entry and exit
- No drilling required on most models and body lift kit compatible
- Cab length
- 2" round bars with aluminum step pads
- Will ship UPS
- Available in black powder coat finish with a limited 5-year warranty
- Polished stainless steel with a limited lifetime warranty
- U.S. Patent No. 6,588,783 - 6,874,801 and other patents pending

Warranty: Go Rhino! Products® warrants its products to be free from defects in materials and workmanship. This limited warranty extends for 5 years/50,000 miles (whichever comes first) for black, 5 years/50,000 miles (whichever comes first) for chrome and a limited lifetime for polished stainless from the date of purchase for parts purchased after April 2004. Warranty claims must be accompanied with original invoice and photos. It is the customer's responsibility to protect the finish with regular applications of a nonabrasive polish that is compatible with the product's finish. This warranty covers the cost of the product only and does not include the cost of removal, installation or shipping. This warranty is void if the product shows signs of alteration, misuse, mishandling, improper care, neglect, improper application, and/or damages improper installation. This warranty provides a one-time replacement on workmanship if all of the above conditions are met.

Liability: Go Rhino! Products® Grille and Brush Guards are designed to enhance the styling of the vehicle only; they are not intended as collision protection bumpers. Go Rhino! Products'® liability is limited to the repair or replacement of the defective part(s) made by GoRhino! Products®. The item(s) will be subjected to inspection by Go Rhino! Products®. Part(s) that in our opinion were damaged by incorrect fitting, neglect or improper use will not be replaced or repaired. Go Rhino! Products® reserves the right to change specifications, terms, conditions and prices of items shown in this catalog without notice.

**Please do not return this product to place of purchase.**  
**If you have defective, missing or damaged parts or need assistance, please contact *Go Rhino Products* for fast, friendly customer service at: 1-888-427-4466 or email:**  
[warranty@gorhino.com](mailto:warranty@gorhino.com)