

INSTALLATION INSTRUCTIONS

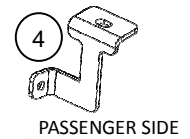
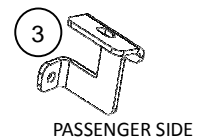
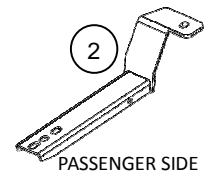
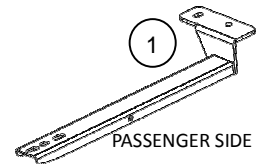
Hyundai Tucson GLS & Limited / Kia Sportage

Brackets

391895
6849040

PART LIST

Item	Qty.	Code	Description	Torque
1	1 Jgo.	3918950AA	Front mounting bracket set	
2	1 Jgo.	3918950BA	Rear mounting bracket set	
3	1 Jgo.	3918954BA	Front auxiliary bracket set	
4	1 Jgo.	3918954CA	Rear auxiliary bracket set	
5	4	390900CA	5/16" T - Bolt	11 Lb/Ft
6	4	341438-BT	3/8" T - Bolt	30 Lb/Ft
	1	KTE-391895	Hardware kit	
7	12		5/16 x 1" Hex head bolt	11 Lb/Ft
8	12		5/16" Flat washer	
9	12		5/16" Lock washer	
10	12		5/16" Hex nut	11 Lb/Ft
11	4		5/16" Flat washer	
12	4		5/16" Lock washer	
13	4		5/16" Hex nut	11 Lb/Ft
14	4		3/8" Lock washer	
15	4		3/8" Flat washer	
16	4		3/8" Hex nut	30 Lb/Ft



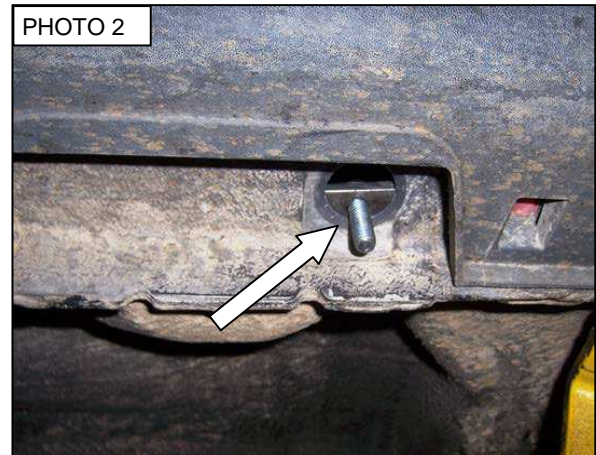
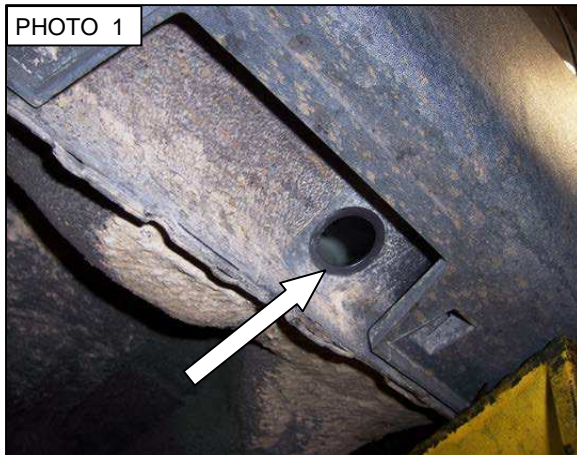
Herramienta requerida:

- A. 9/16", 1/2" Wrench
- B. Ratchet
- C. Ratchet extension
- D. 9/16", 1/2" Socket

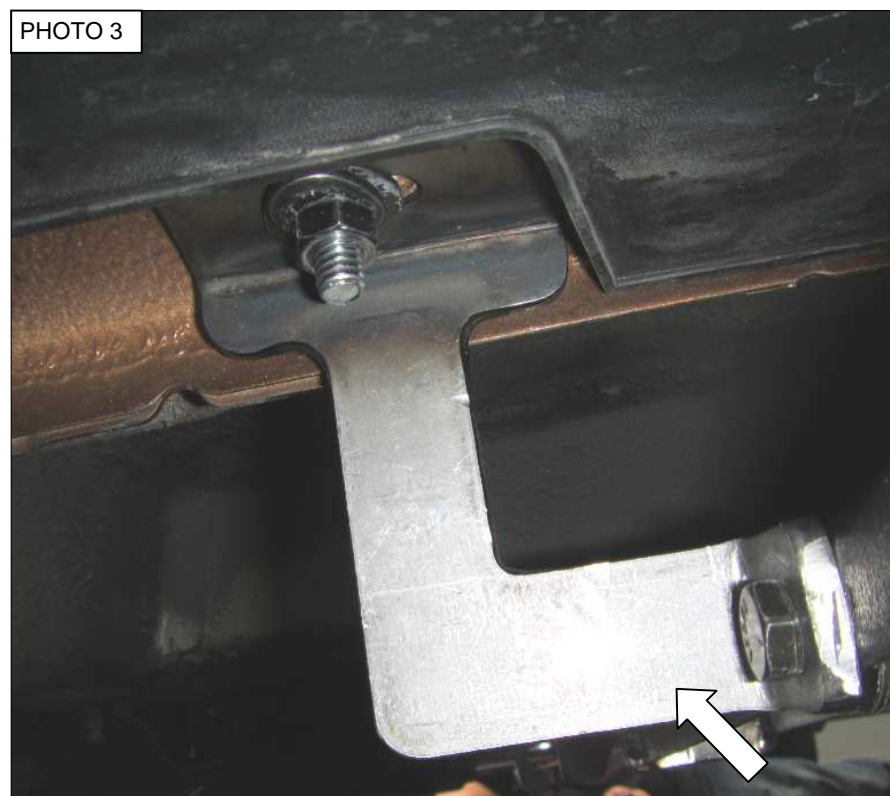
Before beginning the installation, read the instructions thoroughly and verify that all hardware is accounted for. If there are any listed parts missing, please notify your distributor immediately.

To maintain and care this product keep it clean and do not use abrasive cleaners or polish waxes. It is and rust.

1. Begin the installation on the passenger side of the vehicle. Locate the plastic plug in the rocker panel at the front of the vehicle. Remove the plastic plug and install the 5/16" T bolt in the rocker panel. **Photo 1 & 2.**

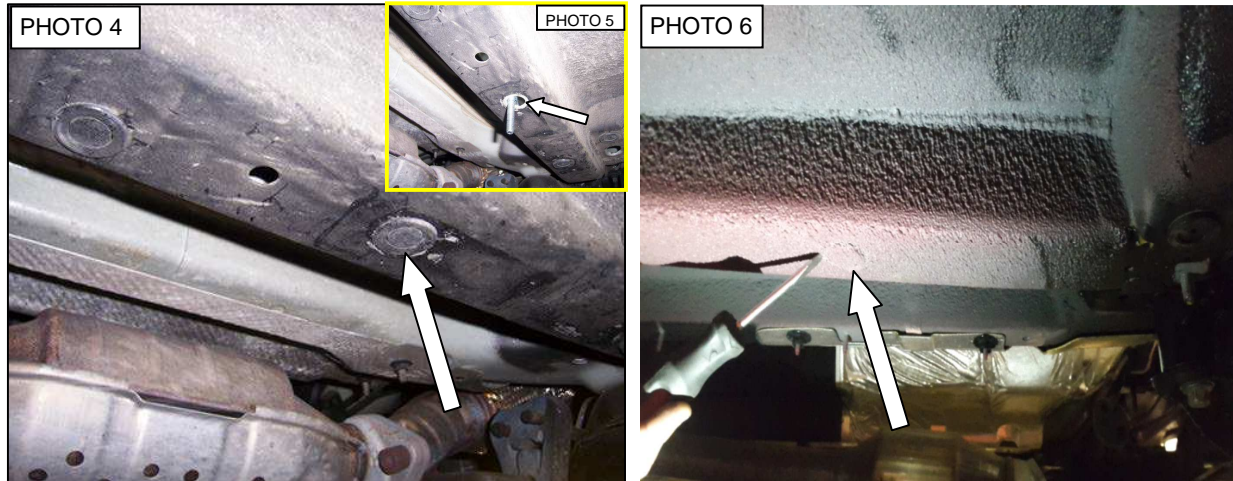


2. Attach the passenger side front auxiliary bracket to the rocker panel using 5/16" T bolt (1) 5/16" flat washer (1) 5/16" lock washer y (1) 5/16" hex nut. **Photo 3.** Leave loose.



3. Locate the plastic plug in the frame toward the front of the vehicle. Remove the plastic plug and insert $3/8"$ T bolt in the rocker panel. **Photo 4 & 5.**

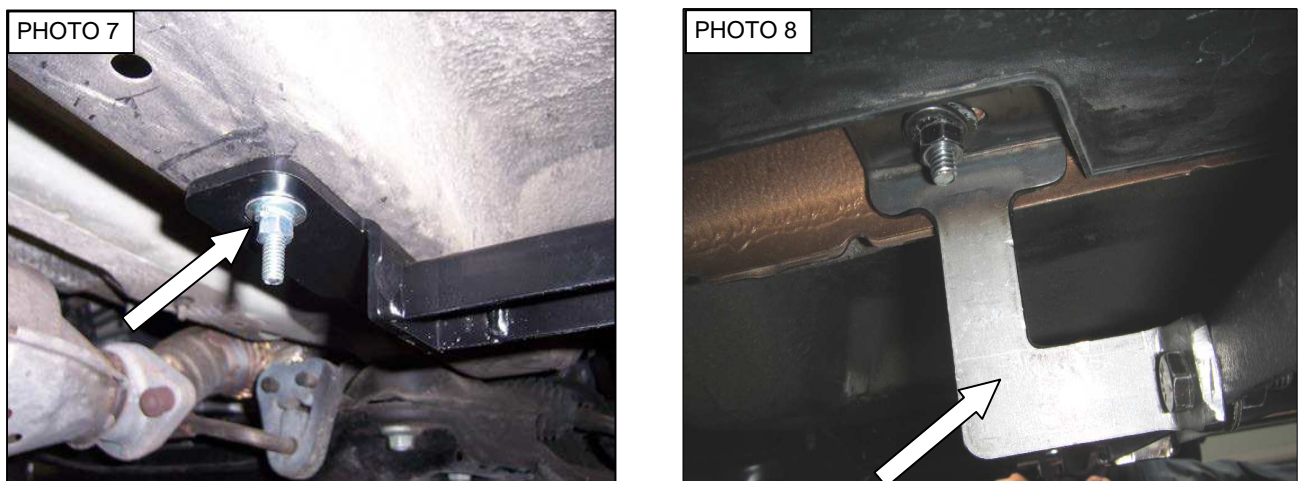
NOTE: For **KIA SPORTAGE** locate the mark in the frame of the vehicle. **Photo 6.** Remove this part using a flat screwdriver for uncover the existing hole.



4. Attach the passenger side front bracket to the bottom of the frame using $3/8"$ T bolt (1) $3/8"$ flat washer (1) $3/8"$ lock washer and (1) $3/8"$ hex nut. **Photo 7.** Leave loose.

NOTE: For **KIA SPORTAGE** attach the front bracket in the hole, do not use the slot of the bracket.

5. Attach the opposite end of the front bracket to the auxiliary bracket using (1) $5/16$ x 1" bolt (1) $5/16$ flat washer (1) $5/16"$ lock washer and (1) $5/16"$ hex nut. **Photo 8.** Leave loose.

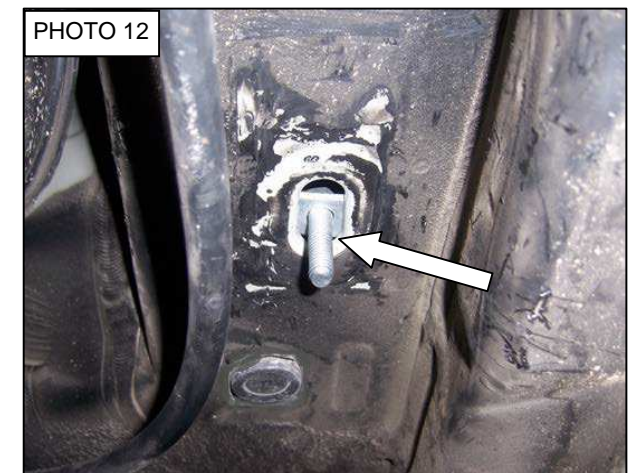


6. Locate the plastic plug in the panel. Remove and install the T bolt. **Photo 9.**

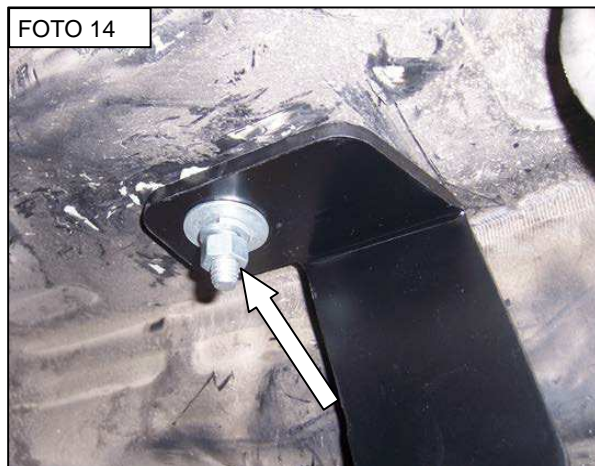
7. Attach the auxiliary bracket in the T bolt , (1) 5/16" flat washer (1) 5/16" lock washer and (1) 5/16" hex nut. Leave loose. **Photo 10.**



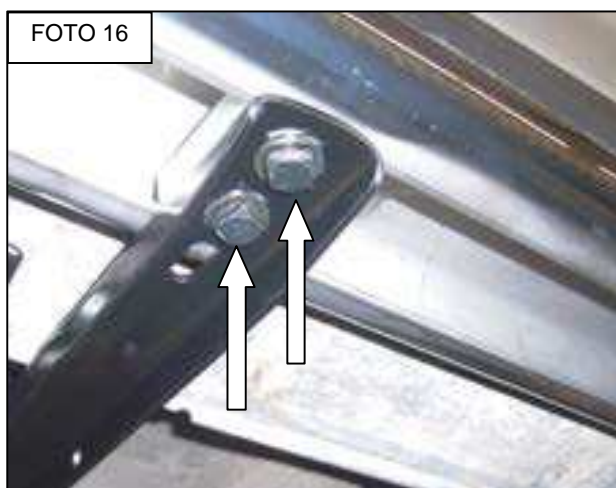
8. Locate the slot in the frame toward the rear of the vehicle and install the 3/8" T bolt. **Photo 11 & 12.**



9. Attach the passenger side rear bracket in the $\frac{3}{8}$ " T bolt (1) $\frac{3}{8}$ " flat washer (1) $\frac{3}{8}$ " lock washer and (1) $\frac{3}{8}$ " hex nut. Leave loose. **Photo 13.**
10. Attach the opposite end of the rear bracket to the auxiliary bracket using $\frac{5}{16}$ " T bolt (1) $\frac{5}{16}$ " flat washer (1) $\frac{5}{16}$ " lock washer and (1) $\frac{5}{16}$ " hex nut. Leave loose. **Photo 14.**



11. Adjust the driver side, side bar on top of the brackets and align and align the side bar with the vehicle. Position the clamp brackets inside the opening of the side bar and align the clamp bracket threads with the slot in the bracket. Attach the side bar to each of the brackets using the clamp brackets, using (2) $\frac{5}{16}$ " square head bolt, (2) $\frac{5}{16}$ " flat washer, (2) $\frac{5}{16}$ lock washer. Leave loose. **Photo 15.**



12. Re-align the side bar with the vehicle and tighten all the nuts and bolts..
13. Repeat the above installation steps to install the driver side brackets and side bar..
Remember to periodically check and retighten all nuts and bolts.