



Installation Instructions

Rhino Charger! RC2 Bull Bar Part Number 5517T, 5517PS, 55172T & 5517211T

2011-2016 Chevrolet Silverado 2500HD & 3500HD 2/4WD

(Excludes models with Driver Alert Package)

Parts List

<u>QTY</u>	<u>Part Description</u>	<u>Qty</u>	<u>Part Description</u>
4	3/8" x 1" Hex Bolt	4	1/2" Flat Washer
4	3/8" Flat Washer	4	1/2" Lock Washer
4	3/8" Lock Washer	1	Driver side Bracket
4	3/8" Hex Nut	1	Passenger side Bracket
4	1/2" X 1 1/2" Hex Bolt	1	Rhino Charger Bull Bar

Tool Required:

- 18mm Wrench & Socket
- 9/16" Wrench & Socket
- Ratchet & Ratchet Extension

Approximate installation time: 30min

Important Installation Notes and Suggestions

Read the assembly and installation instructions completely and verify that all of the parts listed are accounted for. If you have defective, missing or damaged parts or need assistance, please contact Go Rhino Products for fast, friendly customer service at: (888) 427-4466 or email: sales@gorhino.com

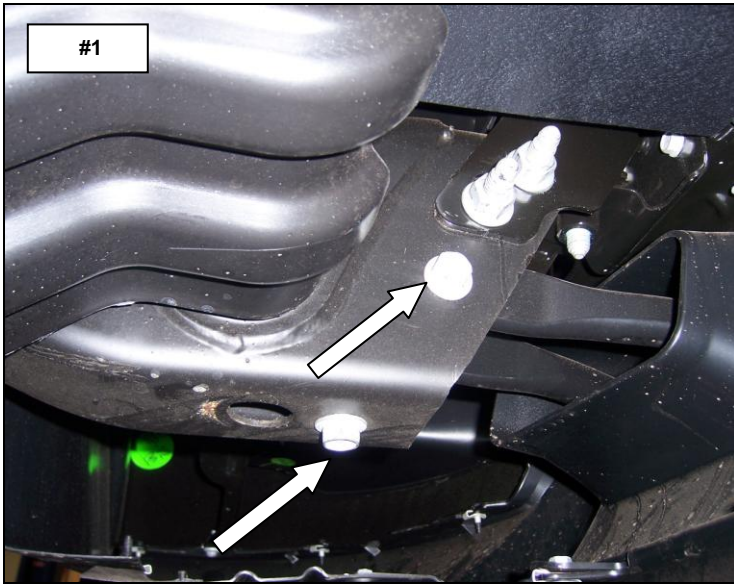
To maintain and care this product keep it clean and do not use abrasive cleaners or polish waxes.

Texture Painted Finish: Mild liquid detergent may be used. **Polished Stainless & Semi Gloss Painted Finishes:** We recommend using only non-abrasive automotive wax such as pure carnauba to avoid scratches and rust.

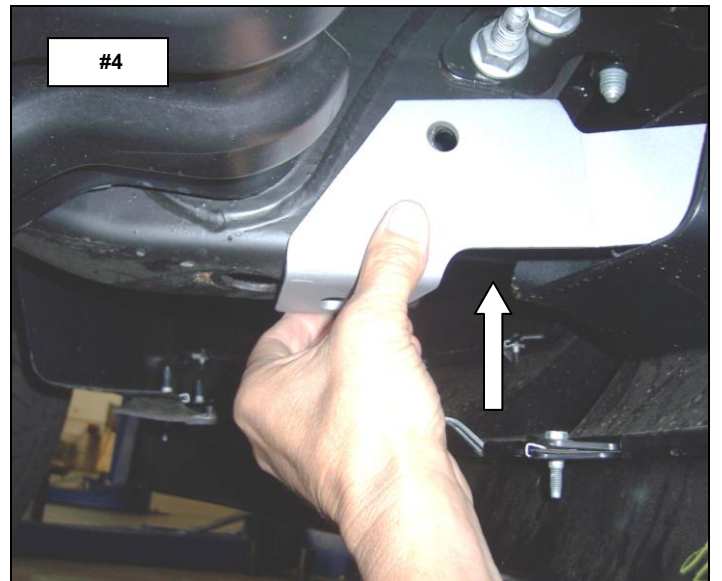
Installation

Step-1 Beginning with the driver side remove the bolts and tow hook from the frame rail. **Photo #1 & #2**

Note: The tow hooks will be re-installed.

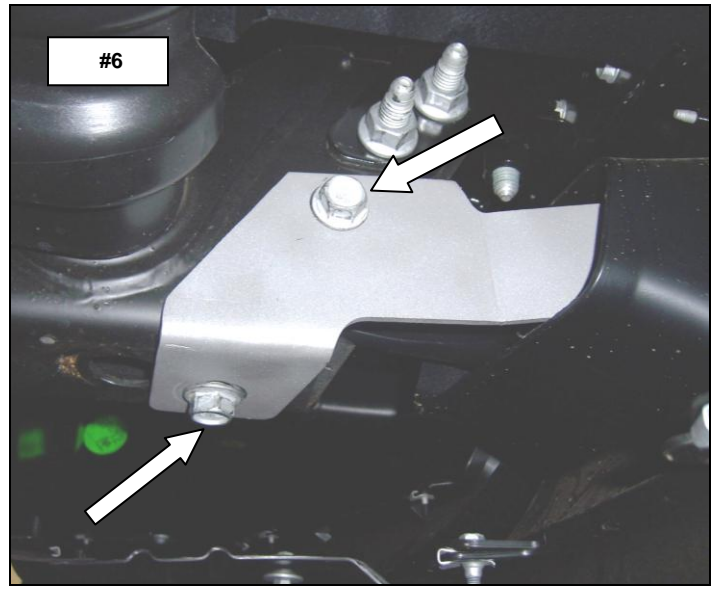


Step-2 From behind the bumper valance, position the driver side bracket so the leg of the bracket extends out through the tow hook opening, then rotate and align the bracket with the side and bottom of the frame. **Photo #3 & #4**

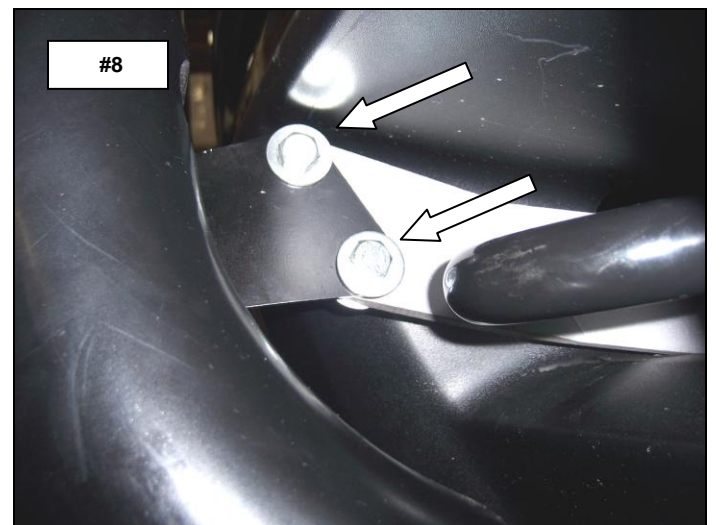
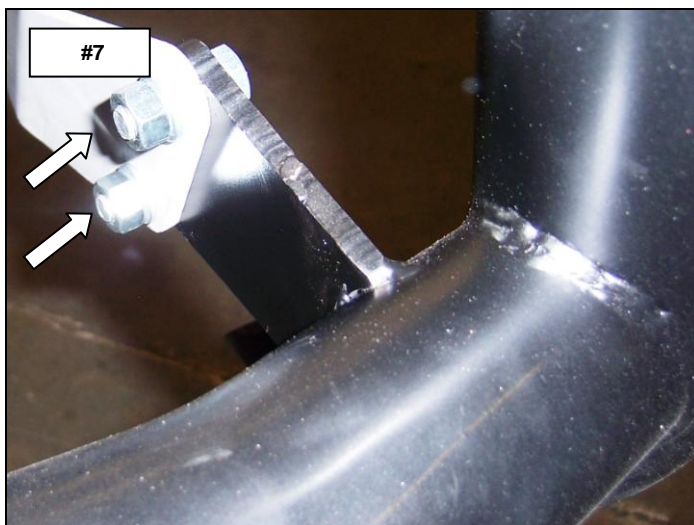


Step-3 position the tow hook inside the frame, align the bracket and tow hook with the holes in the frame and re-install the tow hook bolts. Leave the tow hook bolts loose for final adjustment. **Photo #5 & #6**
Repeat the above steps to install the passenger bracket.

Note: if your vehicle is not equipped with factory tow hooks, attach the brackets to the frame using the 1/2" fasteners supplied.



Step-4 Attach the Rhino Charger Bull Bar to the outside of the mounting brackets using (2) 3/8" x 1" hex bolts, (2) 3/8" flat washers, (2) 3/8" lock washers and (2) 3/8" hex nuts for each side. **Photo #7 & #8**



Step-5 Align the Rhino Charger Bull Bar and bracket assembly, and tighten all nuts and bolts. Remember to check and re-tighten the hardware periodically.

