

INSTALLATION INSTRUCTION  
TOYOTA TACOMA DOUBLE CAB

SIDE BAR

**37488**  
**4431**

Part list				
Item	Qty.	Code	Description	Torq.Max.
1	2 pc	374880AA	Front bracket	
2	4 pc	374880BA	Rear / central bracket	
3	12 pc		M8 x 30mm. Hex head bolt	
4	12 pc		5/16" Flat washer	
5	12 pc		5/16" Lock washer	
6	12 pc		3/8" x 1" Hex head bolt	
7	12 pc		3/8" Flat washer	
8	12 pc		3/8" Lock washer	

Tools required:

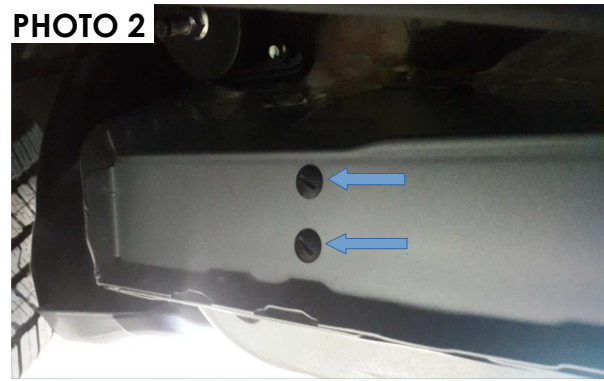
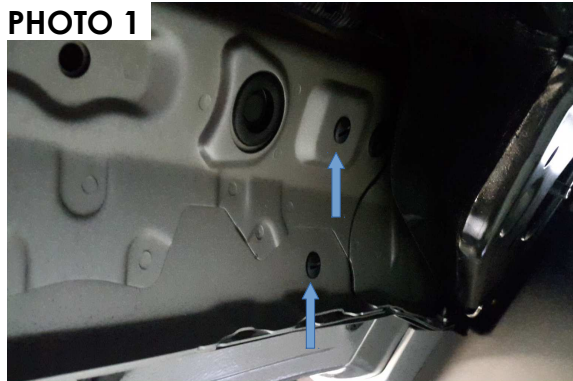
- A. Ratchet / extension
- B. 13mm. Socket
- C. 9/16" Socket /

1. Before beginning the installation read all instructions thoroughly and verify that all hardware is accounted for. If there are any listed parts missing, please notify your distributor immediately.

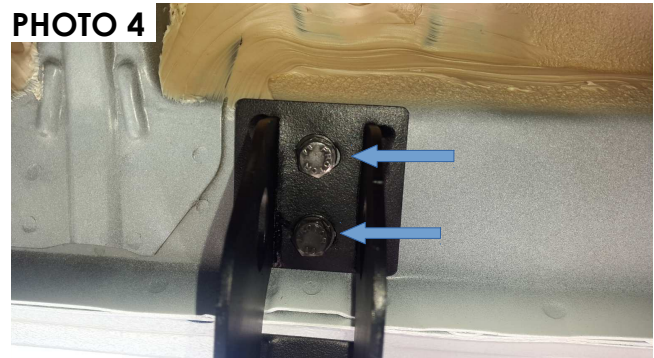
2. To maintain and care this product keep it clean and do not use abrasive cleaners or polish waxes. It is recommended to use only non-abrasive automotive wax such as pure carnauba to avoid scratches and rust.

3. Approximate installation time **30 min.**

4. Locate under the vehicle in the front, two plastic plugs, remove it. ( **Photo 1** ) In the central and in the rear part, also, there are two plastic plugs, remove it, for the bracket installation. ( **Photo 2** )

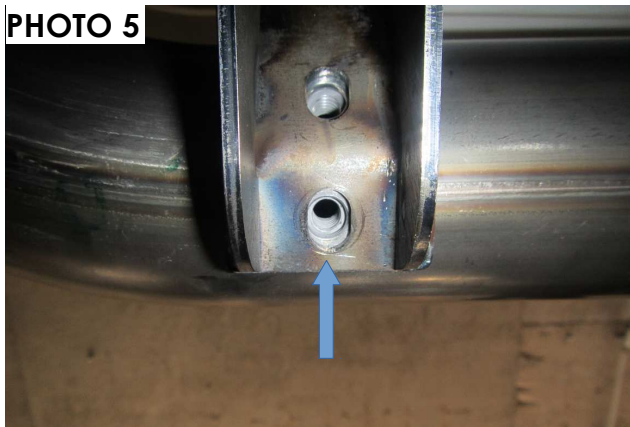


5. Attach the front bracket on the threaded hole and secure with ( 2 )M8 x 30mm. Hex head bolt ( 2 ) M8 flat washer and ( 2 )M8. Lock washer,**Photo 3**. Attach the central bracket on the threaded holes and secure with ( 2 )M8 x 30mm. Hex head bolt,( 2 )M8 flat washer and ( 2 )M8. Lock washer. **Photo 4**. Attach the rear bracket on the threaded holes and secure with ( 2 )M8 x 30mm. Hex head bolt( 2 )M8 flat washer and ( 2 )M8. Lock washer. **Photo 4**.



6. Attach the side bar on the brackets installed and align the side bar holes with the bracket holes and secure with ( 6 ) 3/8" hex head bolt. ( 6 ) 3/8" flat washer and ( 6 ) 3/8" lock washer. Leave loose.

**Photo 5.**



7. Align the side bar with the vehicle and tighten all hardware.

8. Repite the steps for the other side.

9. Remember check and retighten all the hardware periodically.

10. Fill the guarranty card and put it in the vehicle glove box.

