

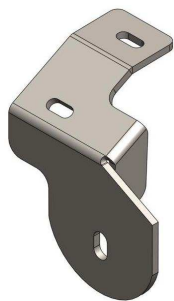
# INSTALLATION INSTRUCTIONS

PART#4416(B-C-PS)

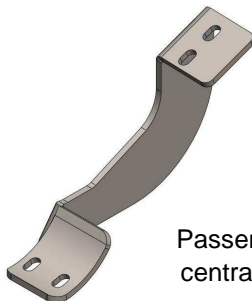
07-13 TOYOTA TUNDRA CREW MAX

## Parts list:

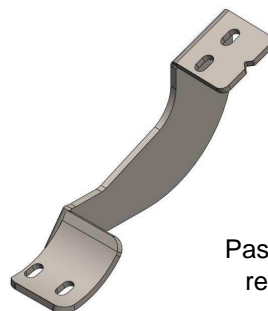
<b>QTY</b>	<b>(1) 37185 Hardware kit includes:</b>	
(1) Side bar set	( 8 ) 3/8" x 1" Hex head bolt.	( 2 ) 1/2 x 2" hex head bolt
(1) Front brackets set	( 8 ) 3/8" Lock washer	( 2 ) 1/2" flat washer
(1) Central brackets set	( 12 ) M8 x 30mm Hex head bolt	( 2 ) 1/2" lock washer
(1) Rear brackets set	( 12 ) 5/16" Flat washer	
	( 12 ) 5/16" Lock washer	



Passenger side front bracket



Passenger side central bracket



Passenger side rear bracket

## Required tools

13 mm Socket/wrench  
9/16" Socket/wrench

12 mm Socket/wrench  
3/4" Socket/Wrench

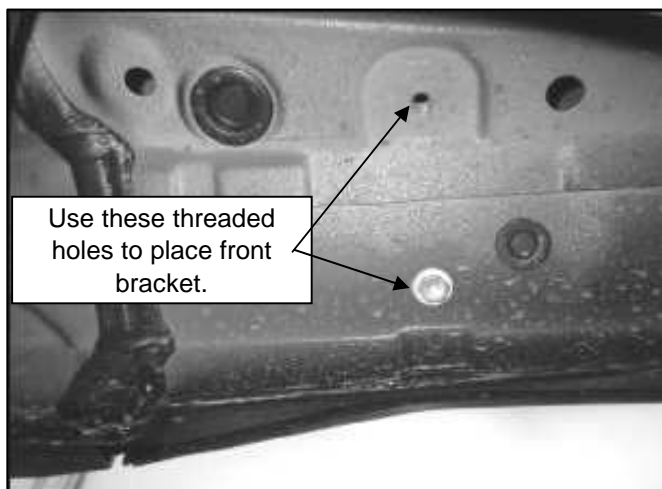
Ratchet Extension  
Ratchet

## Instructions:

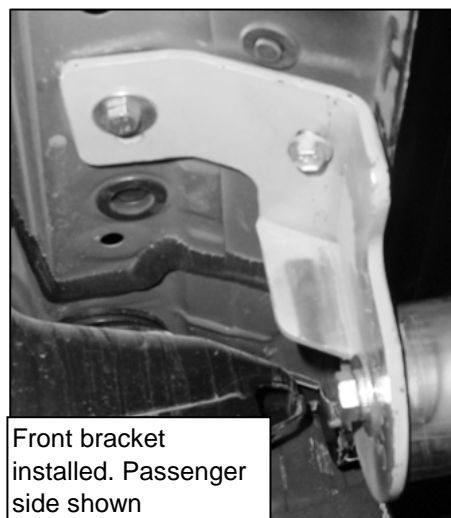
**Approx. Installation time: 35 min.**

1. Read carefully and understand instructions before beginning installation. If any part is missed, please stop installation and call to your distributor to get the missing pieces.
2. Locate existing threaded holes inside the rocker panel at front side of vehicle. Remove existing bolts if necessary. Picture 1.
3. Place front bracket and secure it using (2) M8x30mm hex head bolt, (2) 5/16" flat washer, (2) 5/16" lock washer. Do not tighten yet. Picture 2.

PICTURE 1



PICTURE 2



## Clean and care instructions:

Design:

Quality:

Keep your product clean. Do not use abrasive cleaners or polish. We recommend only non-abrasive automotive wax such as pure carnauba.

Checked 26/03/09

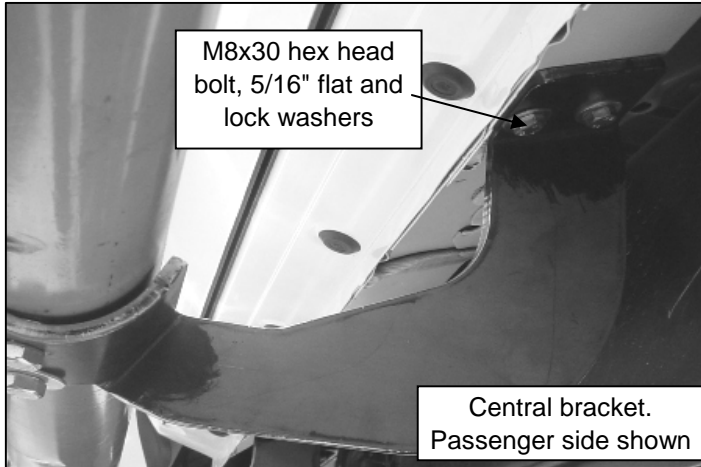
G:\Usuarios\Diseño\Instructivos PDF\37\s\4416.Pdf

# INSTALLATION INSTRUCTIONS

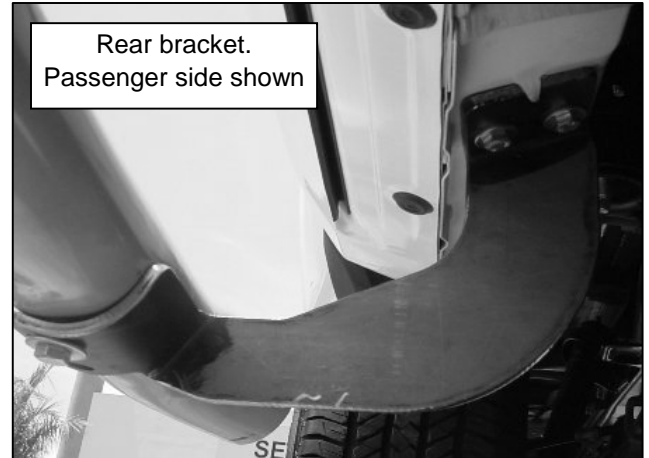
## PART#4416(B-C-PS)

4. To install central & rear brackets, locate threaded holes inside the vehicle's rocker panel, then remove bolts if necessary. Place central & rear brackets, and secure it using: (2) M8x30mm hex head bolts and (2) 5/16" lock washers and (2) 5/16" flat washers by each bracket. Picture 3 & 4. Do not tighten yet.

PICTURE 3



PICTURE 4



5. Mount side bar on brackets and secure it using at front: (1) 1/2 x 2" hex head bolt and 1/2" flat and lock washers, for the others brackets use: ( 2 ) 3/8" x 1" Hex head bolts,( 2 ) 3/8" Lock washers by each bracket. Leave loose.

6. Adjust and align the side bar, then tighten all bolts.

7. Repeat all steps for the other side of vehicle.

8. Remember to check periodically your product. Maybe it will need a bolt re.tighten.

9. Fill out warranty card and place it on your vehicle's glove box.



### Clean and care instructions:

Keep your product clean. Do not use abrasive cleaners or polish. We recommend only non-abrasive automotive wax such as pure carnauba.

Design:

Quality:

Checked 26/03/09

G:\Usuarios\Diseño\Instructivos PDF\37` s\4416.pdf