

# INSTALLATION INSTRUCTIONS

## 4034( B - PS ) SIDE BAR

### 04 - 12 COLORADO/CANYON CREW CAB.

**Parts List:**

<b>QTY</b>			(1) Hardware kit including:
(1) Sidebar set (Left & Right)	(2) Rear auxiliary mounting brackets		(4) 1/2 x 2" Hex head bolt
(2) Front mounting bracket (left & right)	(2) Bolt plates		(6) 1/2" Flat washer
(2) Rear mounting bracket (left & right)			(6) 1/2" Lock washer
			(2) 1/2" Hex nut

**Tools required:**

3/4" Socket                      Ratchet  
 18mm Socket

**Aproximated installation time: 25 min.**

**Instructions:**

1. Read and understand instructions completely before beginning installation.
2. Sidebar set consist of a driver and passenger side. The rear step is the closest to the bend. Be sure to determinate the correct side before installation.
3. Loosen the body mounting bolts from mounts located under the cab of the vehicle just enough to slide mounting brackets.
4. Place the front/rear mounting brackets up to the body mounts and retighten. Hand tighten at this moment.
5. To install auxiliary mounting bracket, locate existing hole in the frame of the vehicle as shown in Picture 3. Then place a bolt plate and secure rear auxiliary mounting bracket to the bolt plate using 1/2" flat & lock washers and hex nut. Secure the other end of the auxiliary mounting bracket to the tube and rear mounting bracket, using a 1/2 x 2" hex head bolts, flat and lock washers. Picture 4 & 5. Leave loose.
6. Place the sidebar up to the front mounting brackets. Bolt front mounting brackets, using 1/2 x 1 1/2" hex head bolt, flat and lock washers. Leave loose.
7. Make any final adjustments to the alignment of the sidebar and tighten all bolts. Repeat for the opposite side.
8. You may need to periodically re-tighten the bolts.

**Assembly Diagram:**

**Picture 1**

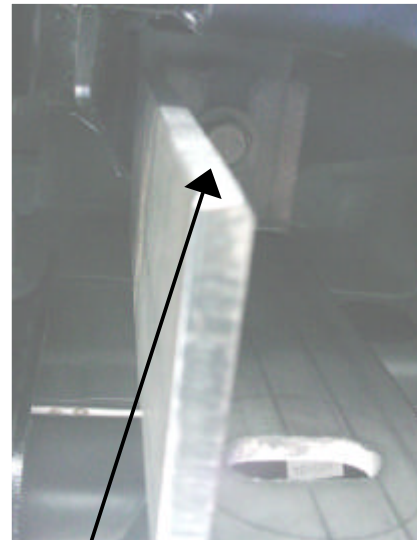
Front mounting bracket, passenger side



Existent bolt, untighten enough to locate the bracket.

**Picture 2**

Raeear mounting bracket, passenger side.



Existent bolt, untighten enough to locate the bracket, or remove the bolt to locate easier the bracket on the bolt, tighten again.

**Cleaning and care instructions:**

Protect the finish with a non-abrasive automotive wax, (e.g. Pure Carnauba) on a regular basis. The use of any soap, polish, or wax that contains an abrasive is detrimental to the finish, as the compounds scratch the finish and cause corrosion.

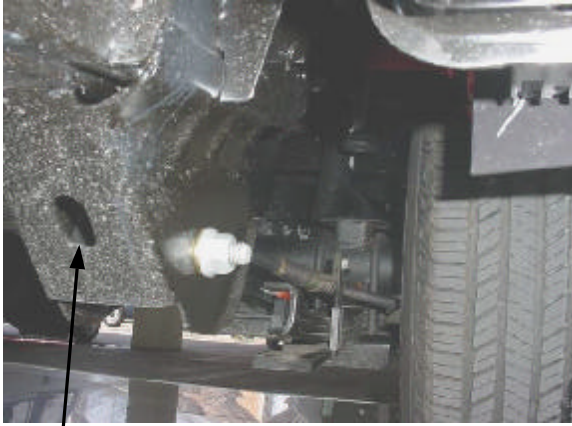
Diseño:

Calidad:

# INSTALLATION INSTRUCTIONS

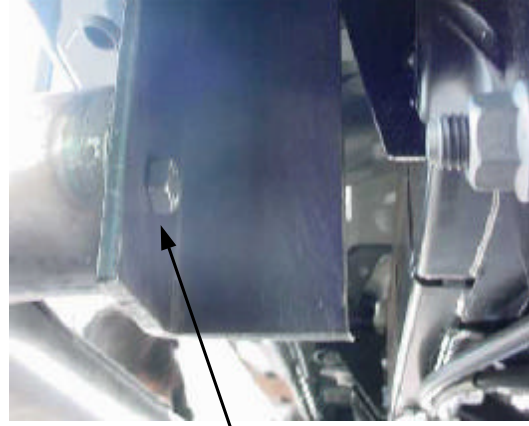
## 4034( B - PS ) SIDE BAR

Picture 3



Place a bolt plate inside this existing hole

Picture 4



Secure rear mounting bracket, auxiliary mounting bracket and sidebar using 1/2 x 2" hex head bolt



Auxiliary mounting bracket passenger side



Sidebar installed, driver side

### Cleaning and care instructions:

Protect the finish with a non-abrasive automotive wax, (e.g. Pure Carnauba) on a regular basis. The use of any soap, polish, or wax that contains an abrasive is detrimental to the finish, as the compounds scratch the finish and cause corrosion.

Diseño:

Calidad: