

GO RHINO! PRODUCTS 3000 SERIES INSTALLATION INSTRUCTIONS

2004 NISSAN TITAN 2/4WD PART NO. 3921MB, 3921MC

REV.A 8/04

<u>QTY</u>	<u>PARTS DESCRIPTION</u>	<u>QTY</u>	<u>PARTS DESCRIPTION</u>
8	1/4" X 3/4" BUTTON HEAD BOLTS	1	13684P PASSENGER LOWER BRACKET
6	1/4" FLAT WASHERS	1	3921D DRIVER SIDE SIDEPLATE
6	1/4" HEX NUTS	1	3921P PASSENGER SIDE SIDE PLATE
4	5/16" X 1" BUTTON HEAD BOLTS	2	1122LP LICENSE PLATE BRACKETS
4	5/16" LOCK NUTS	1	ST3006 STEPTUBE
6	3/8" X 1" HEX BOLTS	1	3922WP PASSENGER BRUSH GUARD
2	3/8" X 1 1/4" HEX BOLTS	1	3922WD DRIVER BRUSH GUARD
16	3/8" LOCK WASHERS	1	N5P PASSENGER HEAD LIGHT PROTECTOR
14	3/8" HEX NUTS	1	N5D DRIVER HEAD LIGHT PROTECTOR
2	3/8" FLAT WASHERS	1	TT3921 TOP TUBE
12	3/8" X 1" BUTTON HEAD BOLTS	1	CP3026 CENTER PLATE
4	12MM -1.25 X 30MM	1	13681P UPPER BRACKETS
4	7/16" FLAT WASHERS	1	13681D UPPER BRACKETS
1	13684D DRIVER LOWER BRACKET	2	1/4" PLASTIC PUSH PINS

NOTE: READ THE ASSEMBLY, AND INSTALLATION INSTRUCTIONS COMPLETELY BEFORE YOU BEGIN THE INSTALLATION. IF THE VEHICLE IS EQUIPPED WITH TOW HOOKS, THEY MUST BE REMOVED TO COMPLETE THE INSTALLATION.

ASSEMBLY INSTRUCTIONS

STEP 1. BEGIN THE ASSEMBLY BY LAYING THE COMPONENTS OUT ON A PROTECTIVE SURFACE.

STEP 2. POSITION THE STEP TUBE, CENTER PLATE AND TOP TUBE BETWEEN THE GRILLE GUARD SIDE PLATES.

STEP 3. LOOSELY ATTACH THE STEP TUBE TO THE SIDE PLATES USING THE 3/8" X1" BUTTON HEAD BOLTS. THE CENTER PLATE USING THE 3/8" X 1" BUTTON HEAD BOLTS, WASHERS, AND NUTS, AND THE TOP TUBE USING THE 3/8" X 1 1/4" HEX BOLTS, AND LOCK WASHERS.

STEP 4. ALIGN THE GRILLE GUARD ASSEMBLY, AND TIGHTEN ALL NUTS AND BOLTS.

STEP 5. ATTACH THE BRUSH GUARDS TO THE GRILLE GUARD SIDE PLATES USING THE 3/8" X 1" BUTTON HEAD BOLTS, LOCK WASHERS, AND NUTS.

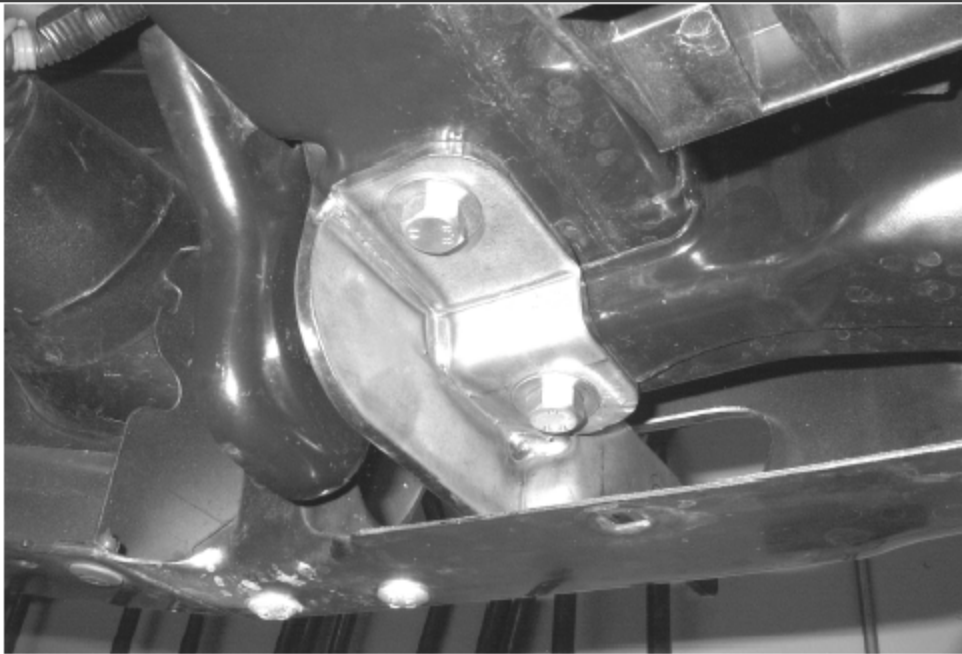
STEP 6. ATTACH THE HEAD LIGHT PROTECTORS TO THE BRUSH GUARDS USING THE 1/4" X 3/4" BUTTON HEAD BOLTS, AND TO THE SIDE PLATES USING THE 5/16" X 1" BUTTON HEAD BOLTS, AND LOCK NUTS.

STEP 7. ALIGN THE GRILLE AND BRUSH GUARD ASSEMBLY, AND TIGHTEN ALL NUTS AND BOLTS.

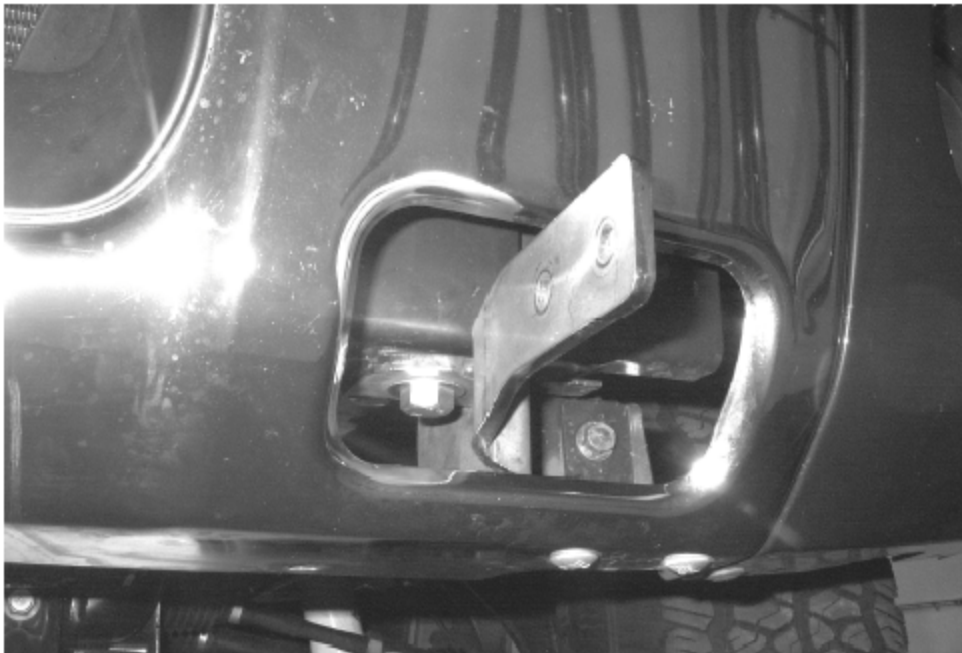
INSTALLATION INSTRUCTIONS



STEP 1. BEGINNING WITH THE DRIVER SIDE, IF EQUIPPED, REMOVE THE BOLTS AND TOW HOOK FROM THE BOTTOM OF THE FRAME.



STEP 2. LOOSELY ATTACH 13684D LOWER MOUNTING BRACKET TO THE BOTTOM OF THE FRAME USING THE 12MM BOLTS AND 7/16" WASHERS AS SHOWN.

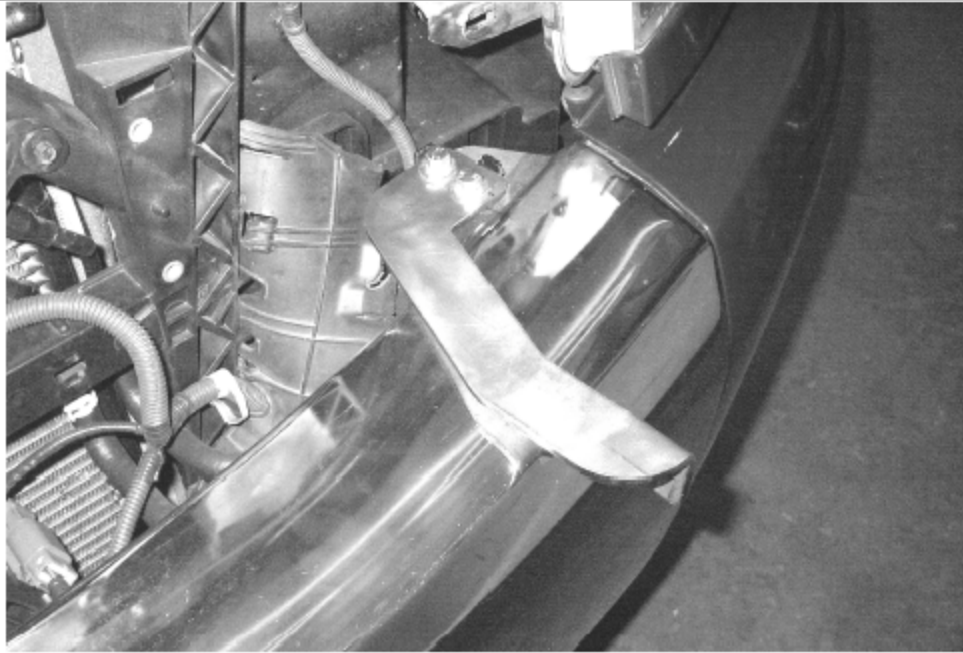


STEP 3. REPEAT THE ABOVE STEPS FOR THE PASSENGER SIDE BRACKET

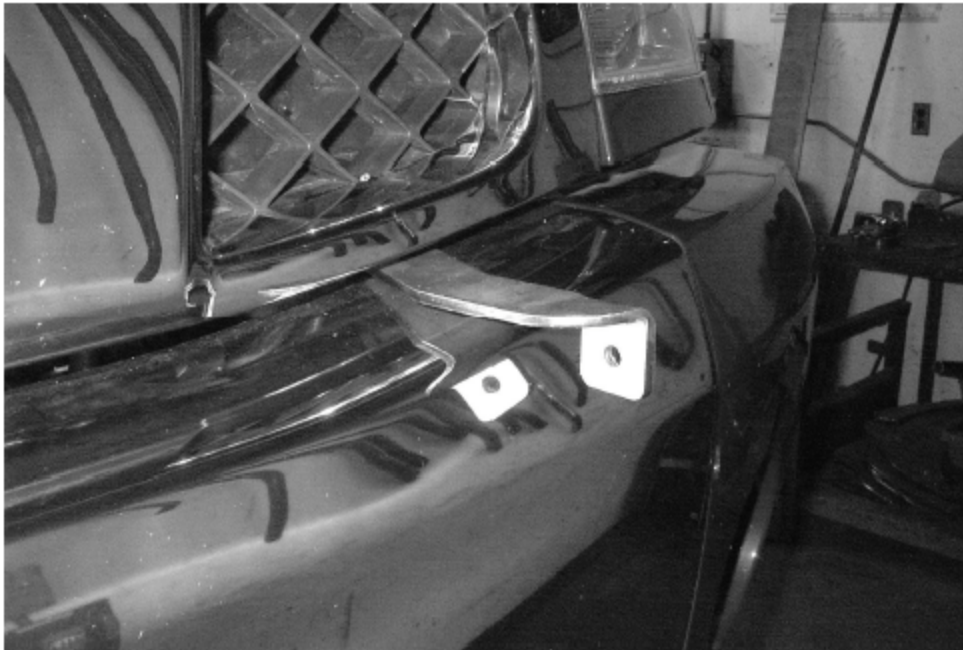
STEP 4. OPEN THE HOOD, UNSNAP THE RETAINING CLIPS AND REMOVE THE GRILLE FROM THE VEHICLE.



STEP 5. LOCATE AND REMOVE THE (2) BOLTS THAT SECURE THE BUMPER TO THE BUMPER BRACKET.



STEP 6. POSITION 13681D UPPER BRACKET AS SHOWN. ATTACH THE BRACKET TO THE BUMPER USING THE 8MM HEX BOLTS AND WASHERS SUPPLIED. REPEAT THE INSTALLATION FOR THE PASSENGER SIDE UPPER MOUNTING BRACKET.



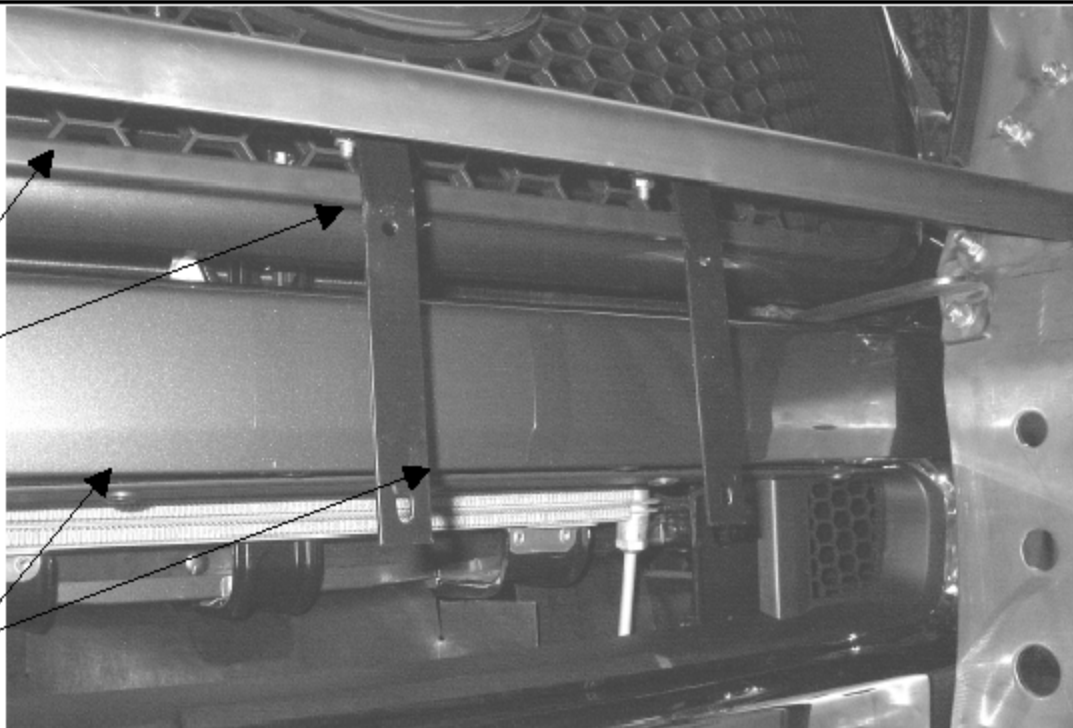
STEP 7. SECURE THE UPPER MOUNTING BRACKETS, AND RE- ATTACH THE GRILLE.



STEP 8. ATTACH THE GRILLE GUARD ASSEMBLY TO THE MOUNTING BRACKETS USING THE 3/8" X 1" HEX BOLTS, WASHERS, AND NUTS.



STEP 9. ALIGN THE GRILLE GUARD ASSEMBLY WITH THE FRONT OF THE VEHICLE AND TIGHTEN ALL MOUNTING NUTS AND BOLTS.



STEP 10. IF YOUR STATE LAW REQUIRES A FRONT LICENSE PLATE, ATTACH THE 1122LP BRACKETS, AND LICENSE PLATE TO THE GRILLE GUARD CENTER PLATE USING THE 1/4" BUTTON HEAD BOLTS, WASHERS, AND NUTS.