



**Installation Instructions (assembly)
3000 Series StepGuard (Grille Guard & Brush Guards) Part Number 3219MB, 3219MC
2010-2016 Dodge Ram 2500HD & 3500HD 2/4WD
(Not compatible with ParkSense® Front Park Assist)**

PARTS LIST

<u>QTY</u>	<u>PART DESCRIPTION</u>	<u>QTY</u>	<u>PART DESCRIPTION</u>
8	1/4" X 1" BUTTON HEAD BOLT	4	3/8" FLAT WASHER
4	1/4" FLAT WASHER	2	3219) SIDE PLATE
4	1/4" LOCK NUT	1	3218P) PASSENGER BRUSH GUARD
8	5/16" X 1" BUTTON HEAD BOLT	1	3218D) DRIVER BRUSH GUARD
8	5/16" FLAT WASHER	1	D6P) PASSENGER HEAD LIGHT PROTECTOR
8	5/16" LOCK NUT	1	D6D) DRIVER HEAD LIGHT PROTECTOR
8	3/8" X 1 1/4" BUTTON HEAD BOLT	1	ST3934) 3" X 39 3/4" BOTTOM STEP TUBE
4	3/8" X 1 1/4" HEX BOLT	1	CP3219) 39 3/4" CENTER PLATE
8	3/8" LOCK WASHER	1	TT3934) 2" X 39 3/4" TOP TUBE
4	3/8" HEX NUT	2	21930) CENTER PLATE BRACKET

ASSEMBLY

READ THE ASSEMBLY AND INSTALLATION INSTRUCTIONS COMPLETELY BEFORE YOU BEGIN.

STEP-1 BEGIN THE ASSEMBLY BY LAYING THE COMPONENTS OUT ON A PROTECTIVE SURFACE.

STEP-2 ATTACH THE (2) CENTER PLATE BRACKETS TO THE CENTER PLATE USING (4) 1/4" X 1" BUTTON HEAD BOLTS, (4) 1/4" FLAT WASHERS, AND (4) 1/4" LOCK NUTS. **PHOTO #1**

STEP-3 POSITION THE GRILLE GUARD SIDE PLATES WITH THE FRONT EDGE DOWN AND THE TOP TUBE, CENTER PLATE AND BOTTOM STEP TUBE BETWEEN THE SIDE PLATES.

STEP-4 ATTACH THE TOP TUBE TO THE SIDE PLATES USING (2) 3/8" X 1 1/4" HEX BOLTS AND (2) 3/8" LOCK WASHERS. DO NOT TIGHTEN.

STEP-5 ATTACH THE CENTER PLATE TO THE SIDE PLATES USING (4) 3/8" X 1 1/4" BUTTON HEAD BOLTS, (4) 3/8" FLAT WASHERS, (4) 3/8" LOCK WASHERS AND (4) 3/8" HEX NUTS. DO NOT TIGHTEN.

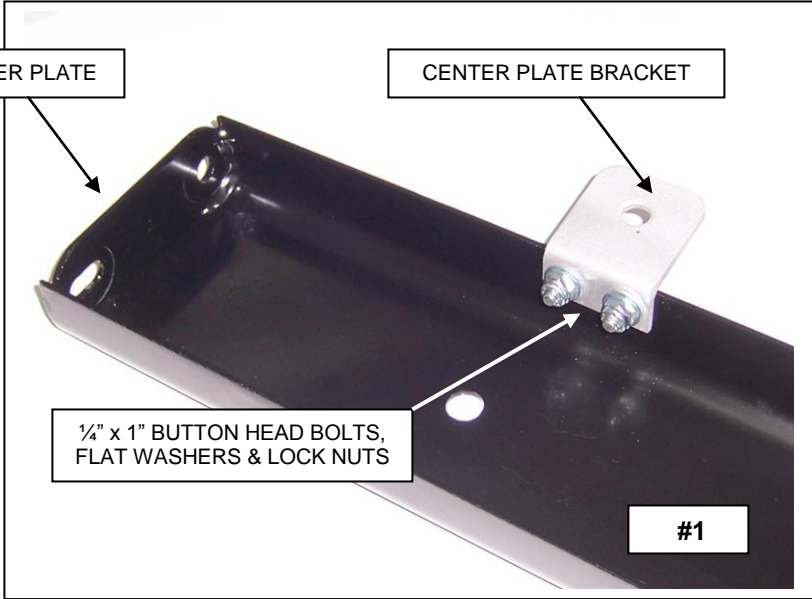
STEP-6 ATTACH THE BOTTOM STEP TUBE TO THE SIDE PLATES USING (4) 3/8" X 1 1/4" BUTTON HEAD BOLTS.

STEP-7 ALIGN THE GRILLE GUARD ASSEMBLY, AND TIGHTEN ALL NUTS AND BOLTS.

STEP-8 POSITION THE DRIVER SIDE BRUSH GUARD UP TO THE GRILLE GUARD ASSEMBLY AND ATTACH THE BOTTOM OF THE BRUSH GUARD TO THE GRILLE GUARD SIDE PLATE USING (1) 3/8" X 1 1/4" HEX BOLT AND (1) 3/8" LOCK WASHER. ATTACH THE TOP OF THE BRUSH GUARD TO THE SIDE PLATE USING (2) 5/16" X 1" BUTTON HEAD BOLTS, (2) 5/16" FLAT WASHERS AND (2) 5/16" LOCK NUTS. DO NOT TIGHTEN.

STEP-9 ATTACH THE DRIVER SIDE HEAD LIGHT PROTECTOR TO THE BRUSH GUARD USING (2) 1/4" X 1" BUTTON HEAD BOLTS, AND TO THE SIDE PLATE USING (2) 5/16" X 1" BUTTON HEAD BOLTS, (2) 5/16" FLAT WASHERS AND (2) 5/16" LOCK NUTS. DO NOT TIGHTEN. REPEAT THE STEPS TO INSTALL THE PASSENGER SIDE BRUSH GUARD AND HEAD LIGHT PROTECTOR.

STEP-10 ALIGN THE GRILLE AND BRUSH GUARD ASSEMBLY, AND TIGHTEN ALL NUTS AND BOLTS.

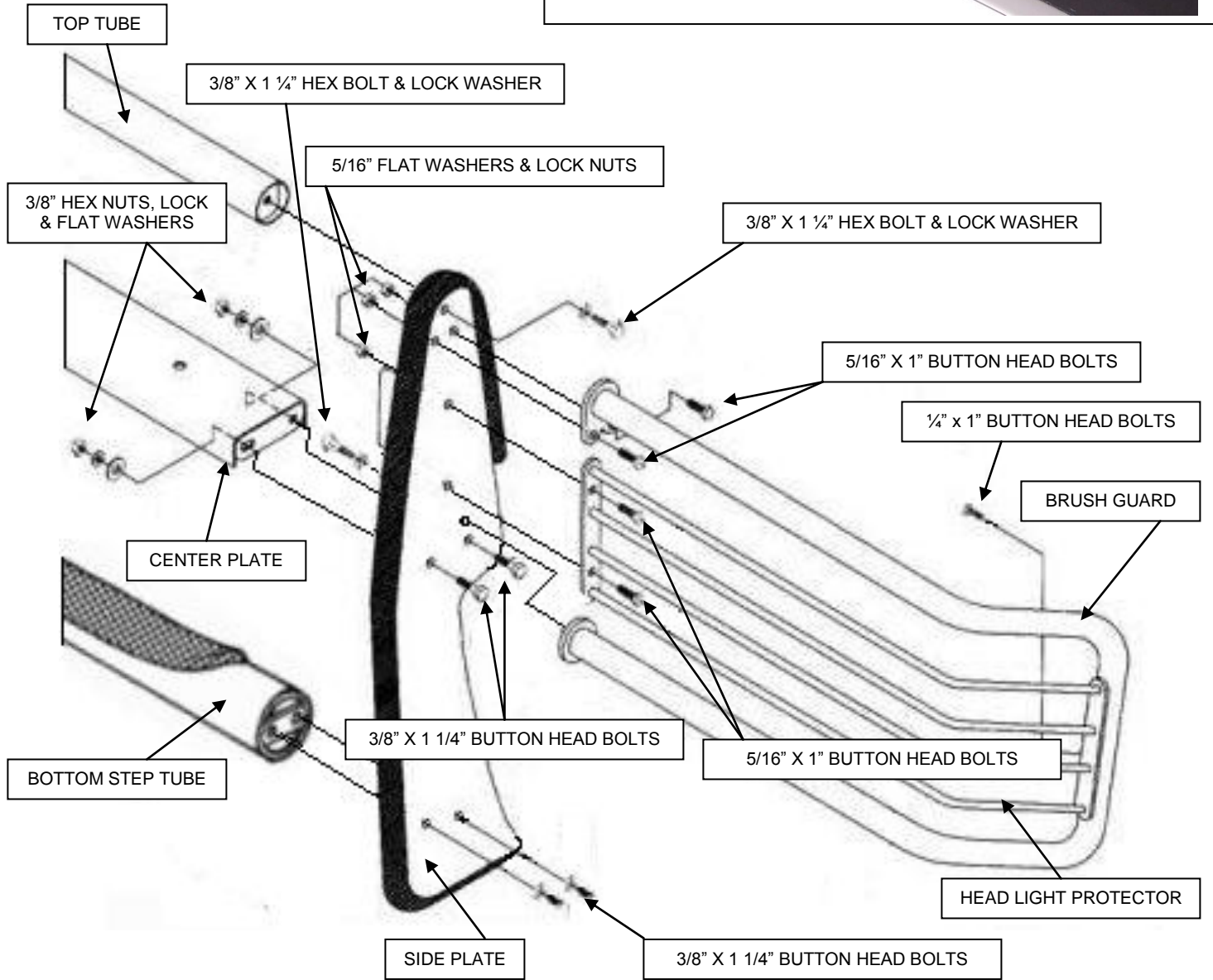


CENTER PLATE

CENTER PLATE BRACKET

1/4" x 1" BUTTON HEAD BOLTS,
FLAT WASHERS & LOCK NUTS

#1



TOP TUBE

3/8" X 1 1/4" HEX BOLT & LOCK WASHER

5/16" FLAT WASHERS & LOCK NUTS

3/8" HEX NUTS, LOCK
& FLAT WASHERS

3/8" X 1 1/4" HEX BOLT & LOCK WASHER

5/16" X 1" BUTTON HEAD BOLTS

1/4" X 1" BUTTON HEAD BOLTS

BRUSH GUARD

CENTER PLATE

3/8" X 1 1/4" BUTTON HEAD BOLTS

5/16" X 1" BUTTON HEAD BOLTS

HEAD LIGHT PROTECTOR

BOTTOM STEP TUBE

SIDE PLATE

3/8" X 1 1/4" BUTTON HEAD BOLTS



**Installation Instructions (assembly)
3000 Series StepGuard (Grille Guard & Brush Guards) Part Number 3219MB, 3219MC
2010-2016 Dodge Ram 2500HD & 3500HD 2/4WD**

PARTS LIST

<u>QTY</u>	<u>PART DESCRIPTION</u>	<u>QTY</u>	<u>PART DESCRIPTION</u>
4	3/8" X 1" HEX BOLT	4	1/2" X 1 1/4" HEX BOLT
4	3/8" X 1 1/4" HEX BOLT	4	1/2" FLAT WASHER
4	3/8" X 2" HEX BOLT	4	1/2" LOCK NUT
8	3/8" LOCK WASHER	2	21920) UPPER BRACKET
12	3/8" FLAT WASHER	1	21901) DRIVER SIDE MAIN BRACKET
4	3/8" HEX NUT	1	21902) PASSENGER SIDE MAIN BRACKET

INSTALLATION

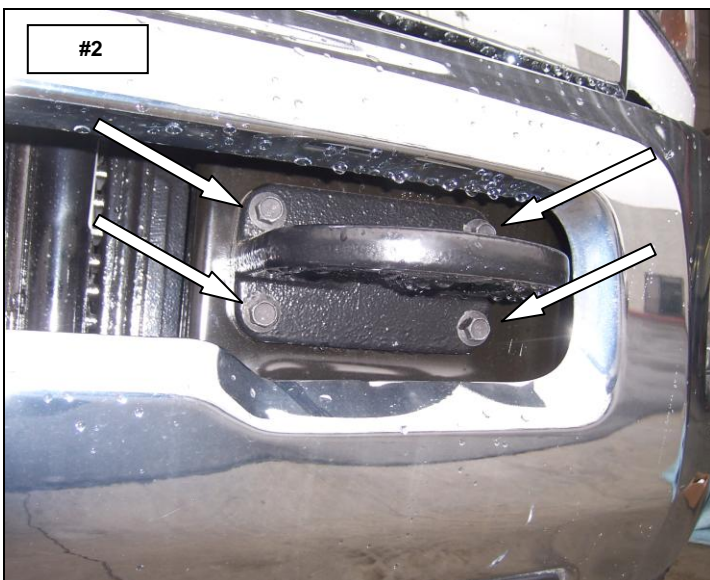
READ THE ASSEMBLY AND INSTALLATION INSTRUCTIONS COMPLETELY BEFORE YOU BEGIN.

NOTE: THIS INSTALLATION REQUIRES REMOVAL OF THE PLASTIC BUMPER GRILLE ON 5.7-LITER GAS ENGINE MODELS.

FOR MODELS WITH OUT THE FACTORY TOW HOOK PACKAGE, ATTACH THE DRIVER AND PASSENGER SIDE MAIN BRACKETS TO THE VEHICLE USING THE 3/8" X 1 1/4" HEX BOLTS, 3/8" FLAT WASHERS, 3/8" LOCK WASHERS AND 3/8" HEX NUTS SUPPLIED.

STEP-1 BEGINNING WITH THE DRIVER SIDE, LOCATE AND REMOVE THE (4) BOLTS AND NUTS SECURING THE TOW HOOK TO THE VEHICLE. PHOTO #2

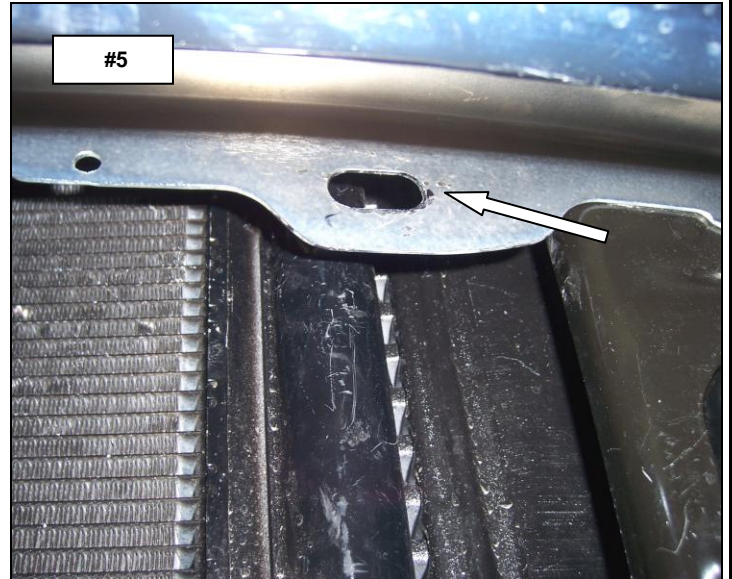
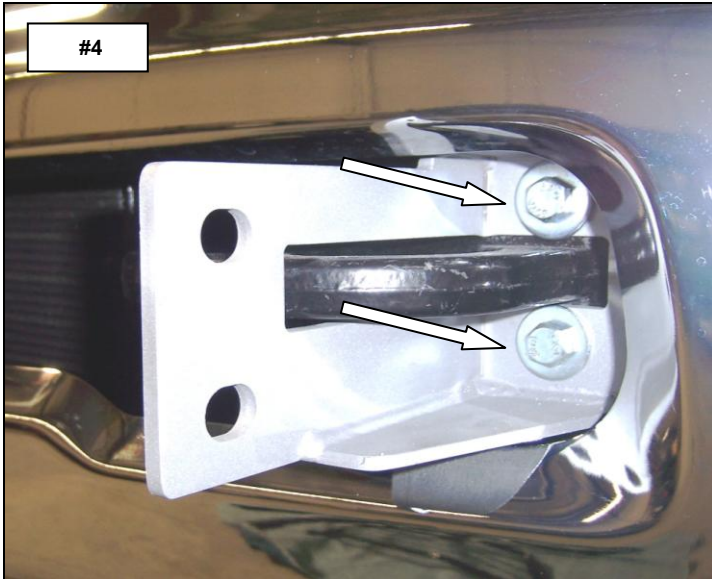
STEP-2 POSITION THE DRIVER SIDE MAIN BRACKET OVER THE TOW HOOK. PHOTO #3



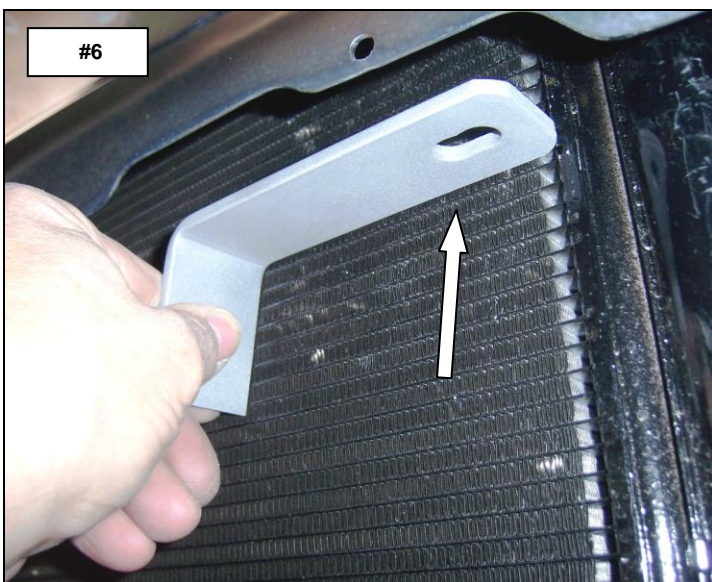
STEP-3 ATTACH THE TOW HOOK AND THE DRIVER SIDE MAIN BRACKET TO THE VEHICLE USING (2) 3/8" X 2" HEX BOLTS, (4) 3/8" FLAT WASHERS (2) 3/8" LOCK WASHERS AND (2) 3/8" HEX NUTS. **PHOTO #4**

RE-ATTACH THE LEFT SIDE OF THE TOW HOOK TO THE VEHICLE USING (2) OF THE FACTORY TOW HOOK BOLTS AND NUTS. DO NOT TIGHTEN.

STEP-4 LOCATE THROUGH THE OPENING IN THE BUMPER, THE OBOURD HOLE IN THE BUMPER FLANGE. **PHOTO #5**



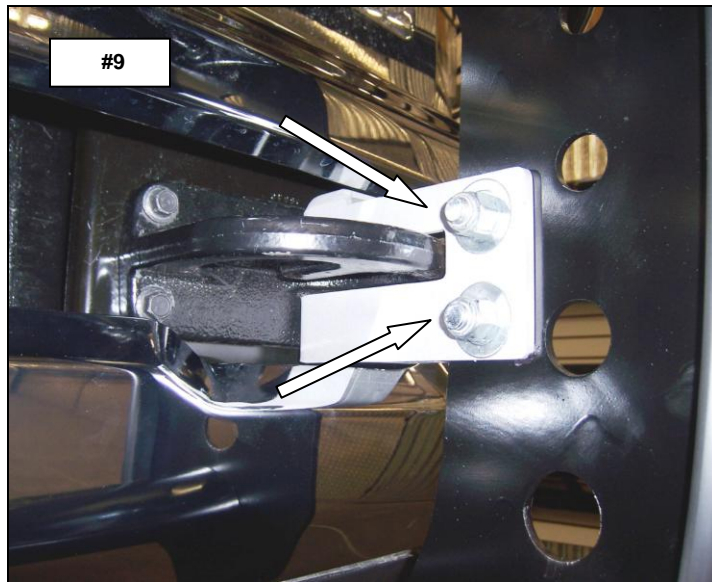
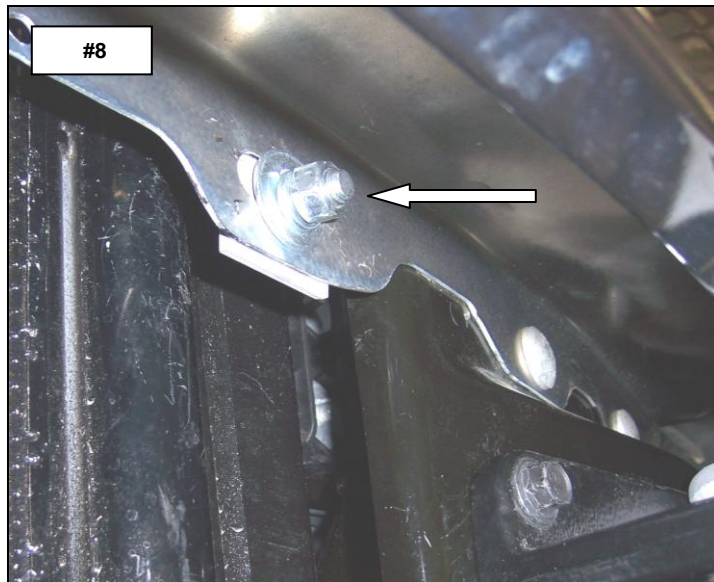
STEP-5 POSITION ONE OF THE UPPER BRACKETS THROUGH THE OPENING AND BEHIND THE BUMPER, SO THE LONGER LEG OF THE BRACKET EXTENDS OUT BETWEEN THE TOP OF THE BUMPER AND THE BOTTOM OF THE GRILLE. **PHOTOS #6 & #7**



STEP-6 ATTACH THE UPPER BRACKET TO THE BUMPER FLANGE USING (1) 3/8" X 1" HEX BOLT, (1) 3/8" FLAT WASHER, (1) 3/8" LOCK WASHER AND (1) 3/8" HEX NUT. DO NOT TIGHTEN. **PHOTO #8**

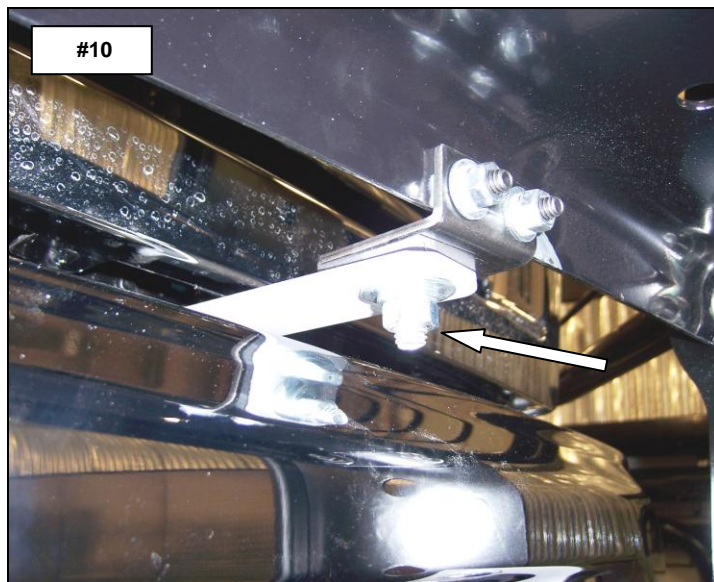
REPEAT THE ABOVE PROCEDURE TO INSTALL THE MAIN AND UPPER BRACKET ON THE PASSENGER SIDE.

STEP-7 ATTACH THE GRILLE AND BRUSH GUARD ASSEMBLY TO THE MAIN BRACKETS USING (4) 1/2" X 1 1/4" HEX BOLTS, (4) 1/2" FLAT WASHERS AND (4) 1/2" LOCK NUTS. DO NOT TIGHTEN. **PHOTO #9**



STEP-8 ATTACH THE CENTER PLATE BRACKETS TO THE UPPER BRACKETS USING (2) 3/8" X 1" HEX BOLTS, (2) FLAT WASHERS, (2) LOCK WASHERS AND (2) HEX NUTS. **PHOTO #10**

STEP-9 ALIGN THE GRILLE GUARD ASSEMBLY WITH THE FRONT OF THE VEHICLE AND TIGHTEN ALL NUTS AND BOLTS. **PHOTO #11**



**FOR TECHNICAL OR WARRANTY INFORMATION CALL:
TOLL FREE (888) 427-4466 FAX (714) 672-0278
GO RHINO! Products® 591 W. Apollo St. Brea, CA 92821**