

INSTALLATION INSTRUCTIONS

3000 SERIES STEP GUARD (CENTER GRILLE GUARD ONLY)

DODGE DURANGO 2/4WD

PART # 3198 (B-C)



<u>QTY</u>	<u>PARTS DESCRIPTION</u>	<u>QTY</u>	<u>PARTS DESCRIPTION</u>
6	1/4" X 3/4" BUTTON HEAD BOLTS	4	3/8" HEX NUTS
6	1/4" HEX NUTS	1	1079BP PASSENGER LOWER BRACKET
10	1/4" PLASTIC PUSH PINS	1	1079CD DRIVER LOWER BRACKET
2	5/16" X 1" HEX BOLTS	1	1079CP PASSENGER LOWER BRACKET
2	5/16" HEX NUTS	2	3198 SIDE PLATES
2	5/16" LOCK WASHERS	2	1122LP LICENSE PLATE BRACKETS
8	1/2" X 1 1/2" HEX BOLTS	1	ST3160 STEPTUBE
8	1/2" FLAT WASHERS	1	TT3006 TOP TUBE
8	1/2" HEX NUTS	1	CP3026 CENTER PLATE
8	1/2" LOCK WASHERS	1	1079BD DRIVER LOWER BRACKET
8	3/8" X 1" BUTTON HEAD BOLTS	1	P200 PLUG KIT
4	3/8" LOCK WASHERS	2	1079A UPPER BRACKETS

ASSEMBLY INSTRUCTIONS

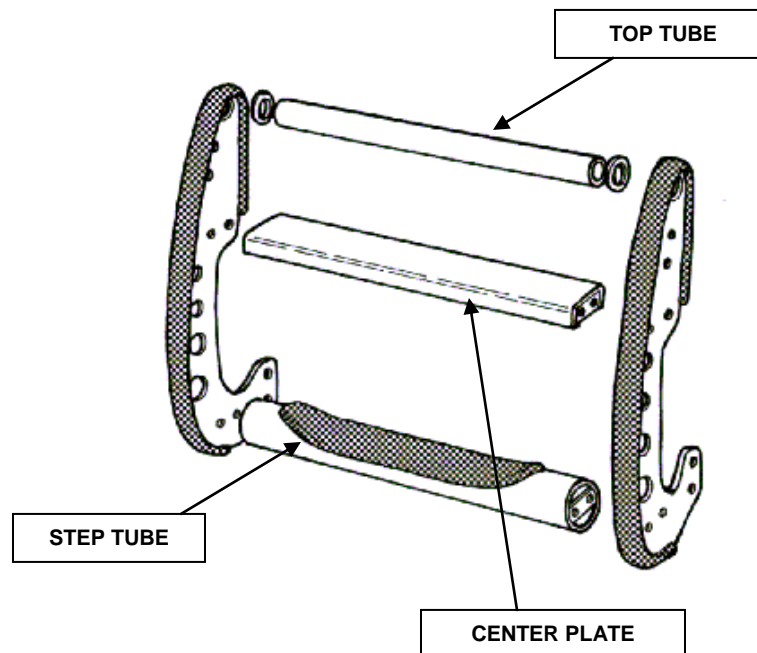
STEP 1. BEGIN THE ASSEMBLY BY LAYING THE COMPONENTS OUT ON A PROTECTIVE SURFACE.

STEP 2. INSTALL THE TUBE CONNECTORS FROM THE P200 PLUG KIT INTO THE TOP TUBE.

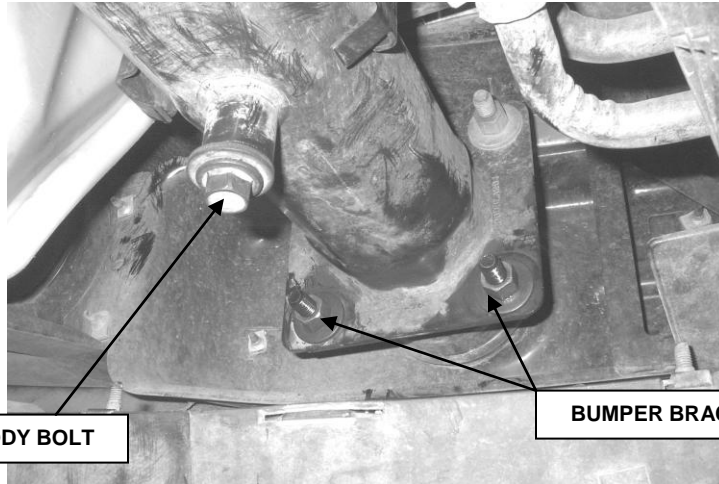
STEP 3. POSITION THE STEP TUBE, CENTER PLATE AND TOP TUBE BETWEEN THE GRILLE GUARD SIDE PLATES.

STEP 4. ATTACH THE STEP TUBE TO THE SIDE PLATES USING THE 3/8" X1" BUTTON HEAD BOLTS, THE CENTER PLATE USING THE 3/8" X 1" BUTTON HEAD BOLTS, WASHERS, AND NUTS, AND TOP TUBE USING THE P200 PLUG KIT HARDWARE.

STEP 5. ALIGN THE GRILLE AND BRUSH GUARD ASSEMBLY AND TIGHTEN ALL NUTS AND BOLTS.



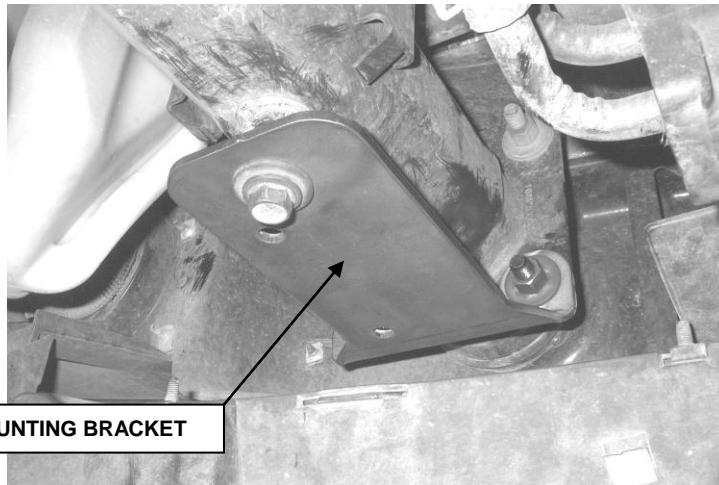
INSTALLATION INSTRUCTIONS



BODY BOLT

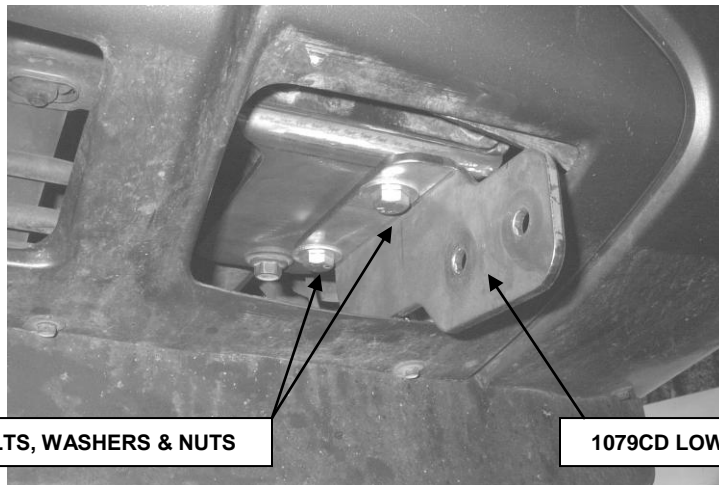
BUMPER BRACKET NUTS

STEP 1. BEGINNING WITH THE DRIVER SIDE, LOCATE AND REMOVE THE BODY MOUNTING BOLT FROM THE BOTTOM OF THE FRAME, AND THE HEX NUTS THAT SECURE THE BUMPER BRACKET TO THE FRAME.



1079BD MOUNTING BRACKET

STEP 2. POSITION 1079BD LOWER MOUNTING BRACKET OVER THE STUDS, AND LOOSELY ATTACH THE BRACKET TO THE FRAME USING THE FACTORY NUTS AND BOLT AS SHOWN.



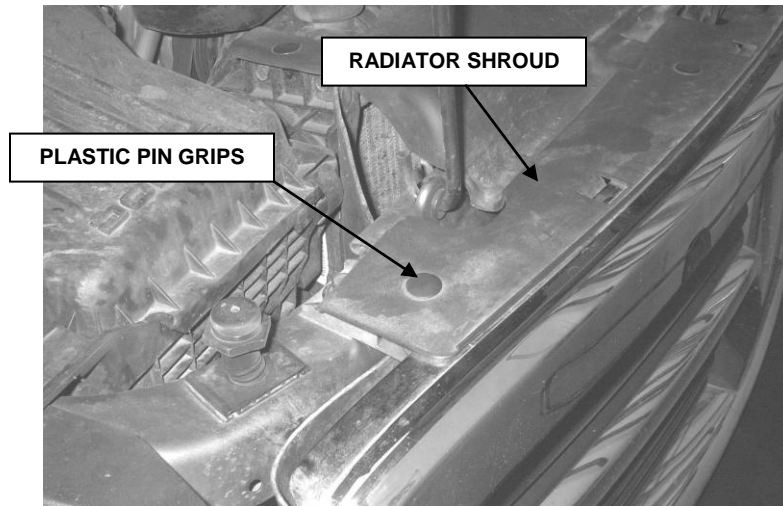
1/2" BOLTS, WASHERS & NUTS

1079CD LOWER BRACKET

STEP 3. ATTACH 1079CD LOWER BRACKET TO THE BOTTOM OF 1079BD USING THE 1/2" X 1 1/2" BOLTS WASHERS AND NUTS AS SHOWN. REPEAT THE ABOVE STEPS FOR THE PASSENGER SIDE LOWER MOUNTING BRACKET.

Rev: Date: 2/17/2017

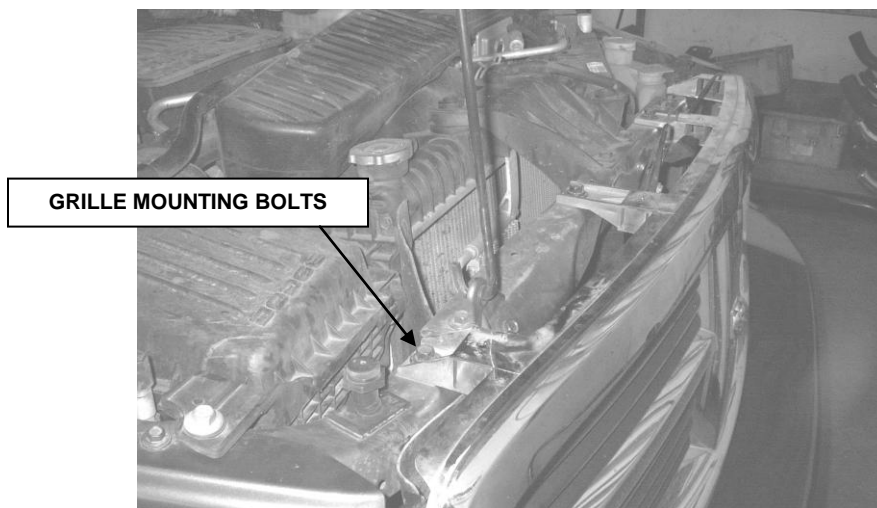
Page 2 of 5



RADIATOR SHROUD

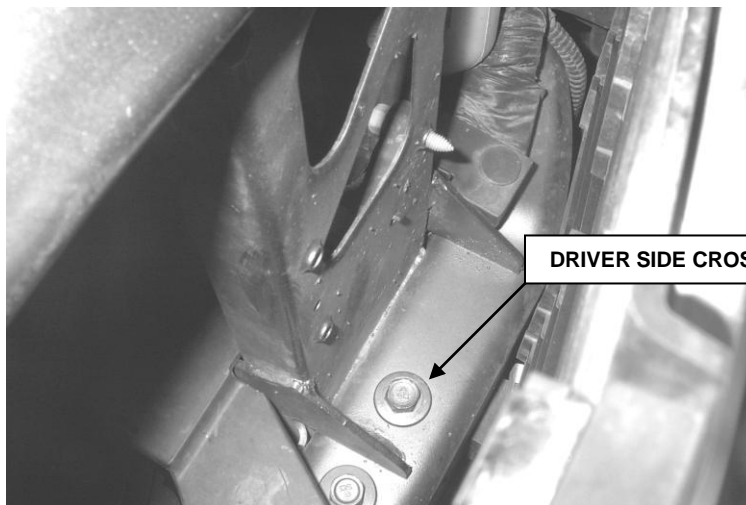
PLASTIC PIN GRIPS

STEP 4. OPEN THE HOOD AND REMOVE THE PLASTIC PIN GRIPS AND PLASTIC RADIATOR SHROUD.



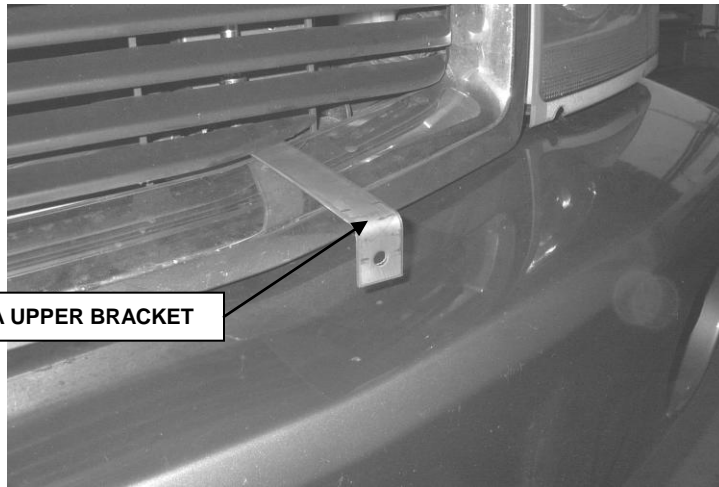
GRILLE MOUNTING BOLTS

STEP 5. REMOVE THE (4) BOLTS SECURING THE TOP, AND UNSNAP THE ENDS OF THE GRILLE.



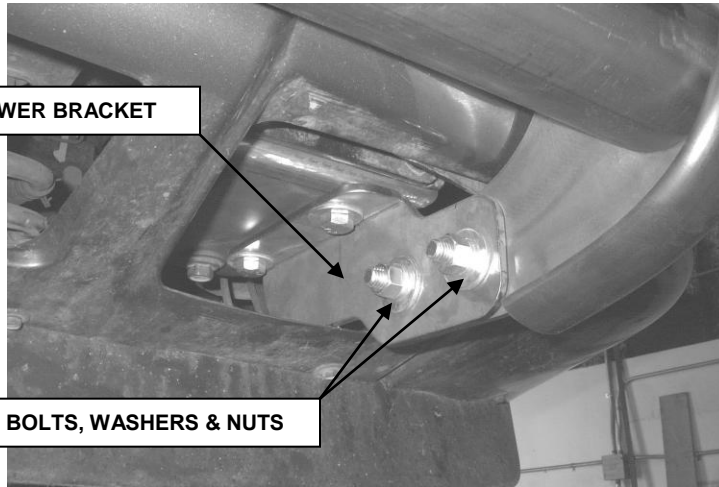
DRIVER SIDE CROSS MEMBER BOLT

STEP 6. REMOVE THE CROSS MEMBER BOLT. ACCESS THE BOLT BY PULLING OUTWARD ON THE TOP OF THE GRILLE.



1079A UPPER BRACKET

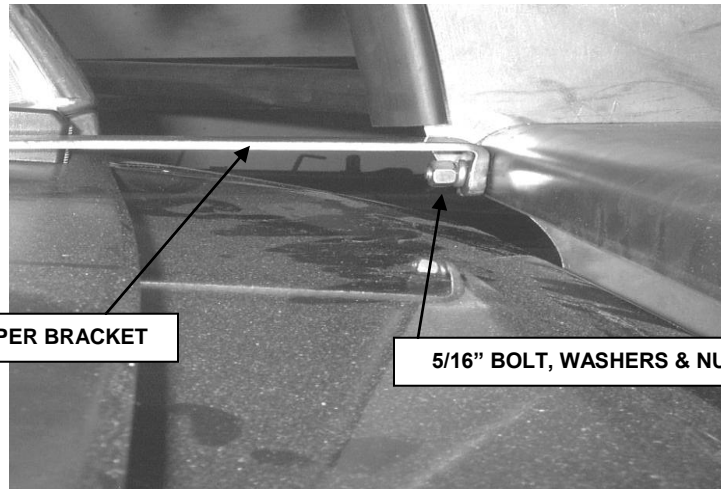
STEP 7. POSITION 1079AP UPPER BRACKET IN THE GRILLE AS SHOWN, AND ATTACH TO THE CROSS MEMBER USING THE FACTORY BOLT. REPEAT THE INSTALLATION FOR THE PASSENGER SIDE UPPER MOUNTING BRACKET.



1079CD LOWER BRACKET

1/2" BOLTS, WASHERS & NUTS

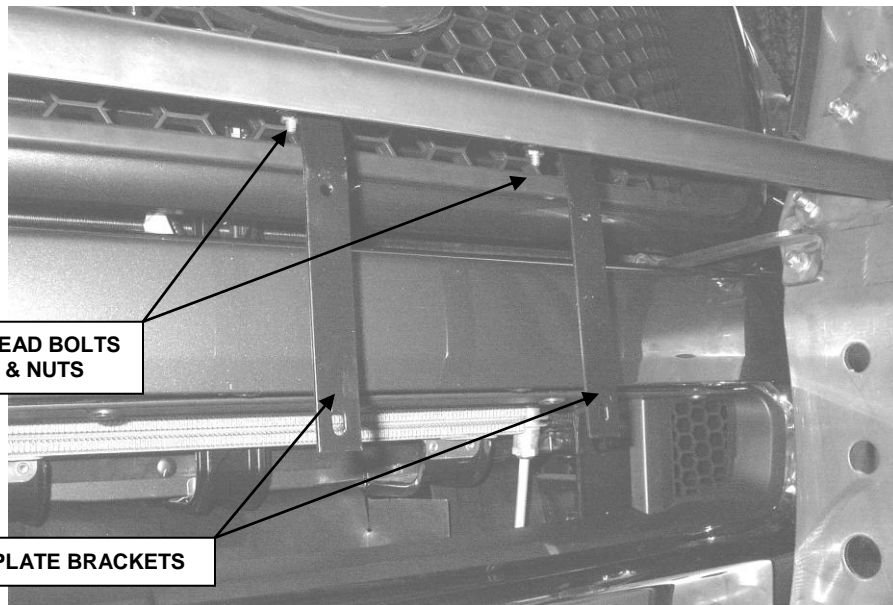
STEP 8. ATTACH THE LOWER LEGS OF THE GRILLE GUARD ASSEMBLY TO THE OUTSIDE OF THE LOWER MOUNTING BRACKETS USING THE 1/2" X 1 1/2" HEX BOLTS, WASHERS, AND NUTS.



STEP 9. ATTACH THE CENTER PLATE OF THE GRILLE GUARD ASSEMBLY TO THE UPPER MOUNTING BRACKETS USING THE 5/16" X 1" HEX BOLTS, WASHERS, AND NUTS.

STEP 10. ALIGN THE GRILLE GUARD ASSEMBLY WITH THE FRONT OF THE VEHICLE AND TIGHTEN ALL MOUNTING NUTS AND BOLTS.

STEP 11. RE-ATTACH THE GRILLE AND RADIATOR SHROUD.



STEP 12. IF YOUR STATE LAW REQUIRES A FRONT LICENSE PLATE, ATTACH THE 1122LP BRACKETS, AND LICENSE PLATE TO THE GRILLE GUARD CENTER PLATE USING THE 1/4" BUTTON HEAD BOLTS, AND NUTS.