

## 3000 SERIES STEPGUARD

### GRILLE GUARD ASSEMBLY INSTRUCTIONS

PART NO. 3128B & 3128C 2009/2013 DODGE RAM 1500 2/4WD

**Do not attempt to install this product on any vehicle other than the one it is designed for and listed above!**

### PARTS LIST

QTY	PART DESCRIPTION	QTY	PART DESCRIPTION
10	3/8" x 1 1/4" hex bolt	2	31283AA side plate
10	3/8" lock washer	1	ST3934 3" x 39 3/4" bottom step tube
4	3/8" hex nut	1	CP3934L 39 3/4" center plate
4	3/8" flat washer	1	31288AA 2" x 39 3/4" top tube

### Assembly instructions

Read the assembly and installation instructions completely before you begin.

This installation requires cutting the bumper air dam.

**Step 1.** Begin the grille guard assembly by laying the components out on a protective surface.

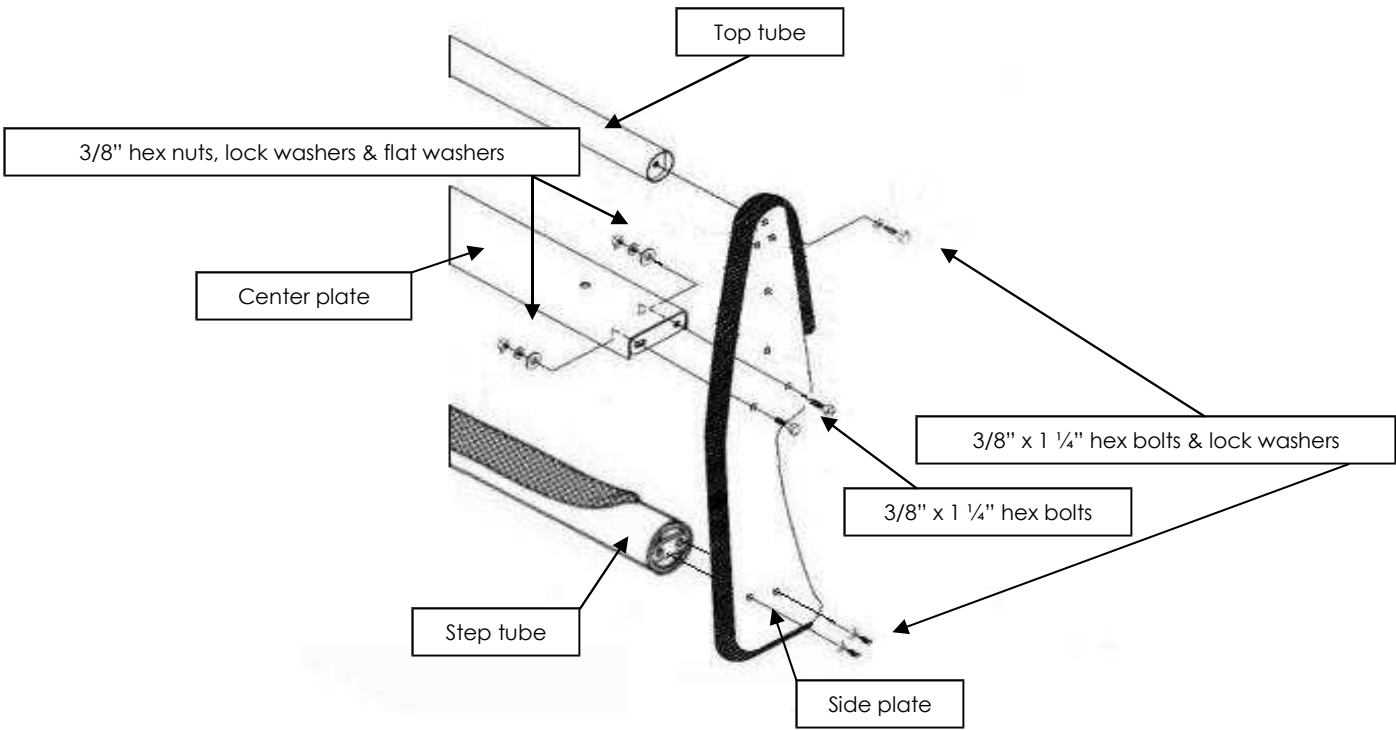
**Step 2.** Position the grille guard side plates with the front edge down and the 2" top and bottom step tube between the side plates.

**Step 3.** Attach the top and bottom step tube to the side plates using the 3/8" x 1 1/4" hex bolts and lock washers. Do not tighten.

**Step 4.** Position the center plate between the grille guard side plates, with the **slotted mounting holes** in the center plate down.

**Step 5.** Insert the 3/8" x 1 1/4" hex bolts through the holes in the side plates and center plate, and install the 3/8" flat washers, lock washer and hex nuts. Do not tighten.

**Step 6.** Align the grille guard, and tighten only the center plate and step tube nuts and bolts.



## 3000 SERIES STEPGUARD

### COMPLETE GRILLE & BRUSH GUARD INSTALLATION INSTRUCTIONS

PART NO. 3128B & 3128C 2009 DODGE RAM 1500 2/4WD

**Do not attempt to install this product on any vehicle other than the one it is designed for and listed above!**

PARTS LIST				
Item	QTY	Code	Description	Max Torque
1	1 Set	524244AA	Main brackets set	
2	1 Set	21711	Extension bracket	
3	1 set	504234AA	Auxiliary bracket	
4	2 pcs	21730	Rectangular spacer	
5	6 pcs		1/2 x 1 1/2" hex head bolt	70 L-B. Ft.
6	12 pcs		1/2" flat washer	
7	6 pcs		1/2" lock washer	
8	6 pcs		1/2" nut	70 L-B. Ft.
9	4 pcs		1/2 x 1 1/2" carriage bolt	70 L-B. Ft.
10	4 pcs		1/2" flat washer	
11	4 pcs		1/2" lock washer .	
12	4 pcs		1/2" nut	70 L-B. Ft.
13	2 pcs		7/16 x 5" hex. head bolt	45 L-B. Ft.
14	4 pcs		7/16" flat washer	
15	2 pcs		7/16" lock washer	
16	2 pcs		7/16" nut	45 L-B. Ft.

#### Required Tool:

- A. Ratchet w/5" extension
- B. 5/8" Wrench or Socket
- C. 11/16" Wrench & socket
- D. 10mm Socket
- E. 3/4" Wrench or socket
- F. Flat screwdriver
- G. Utility knife
- H. 18mm wrench or socket

1. Before beginning the installation read all instructions thoroughly and verify that all hardware is accounted for. if there are any listed parts missing, please notify your distributor immediately.

2. To maintain and care this product keep it clean and do not use abrasive cleaners or polish waxes. It is recommended to use only non-abrasive automotive wax such as pure carnauba to avoid scratches and rust.

3. The approximate installation time is **45 min.**

4. Beginning with the passenger side, scribe 2 vertical lines the width of the outer rib in the bumper air dam. Measure and scribe 2 horizontal lines as shown. Use a utility knife or dremel tool to cut and remove the rectangular section between the lines. PHOTO# 1 y 2.

NOTE: verify the measurements before cutting.  
Repeat the above procedure on the driver side.

5. Locate the nuts and studs that secure the bumper bracket to the passenger side frame rail. Remove the (2) outer nuts and install (1) rectangular spacer is only used on models equipped with factory tow hooks.

PHOTO 1

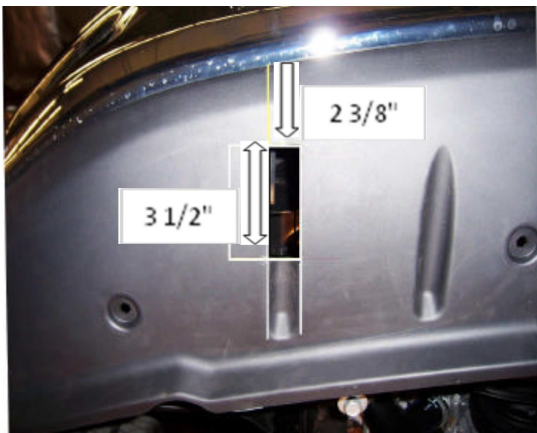
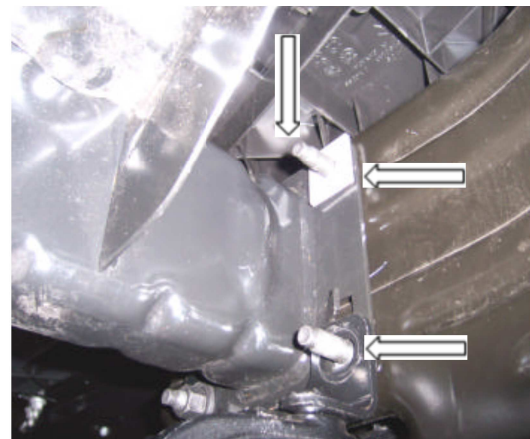


PHOTO 2



6. Position the passenger side frame bracket over the studs and secure the bracket to the frame using the (2) factory nuts. Do not tighten. Photo#3

7. Insert the passenger side extension bracket up through the opening cut in the air dam. Attach the extension bracket to the frame bracket using (2) 1/2" x 1 1/2" carriage bolts, flat washers, lock washers and hex nuts. Do not tighten. PHOTO # 4

Repeat the above procedure to install the driver side frame and extension bracket.

PHOTO 3

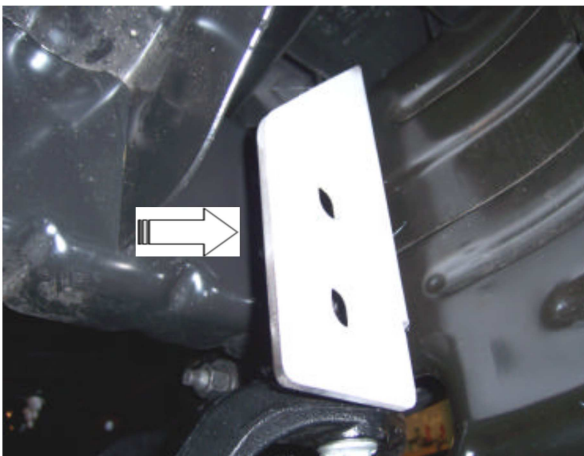
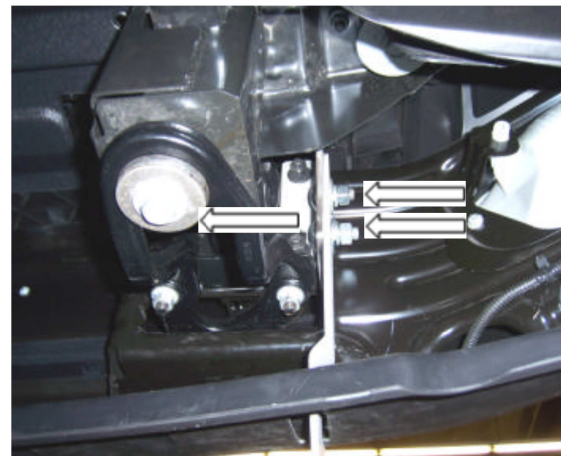


PHOTO 4



8. To install the auxiliary bracket use the provided template to cut out the bumper's lower cover position the auxiliary bracket through the opening cut out in the lower cover. PHOTO #5  
Secure to the tow hook support using a 7/16" x 5" hex bolt, flat and lock washers, and hex nut. Also Attach to the lower bolt of the main bracket. Do not tighten yet repeat the procedure to the opposite side PHOTO #6

PHOTO 5

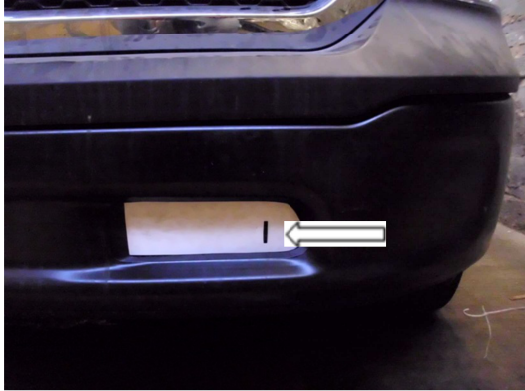
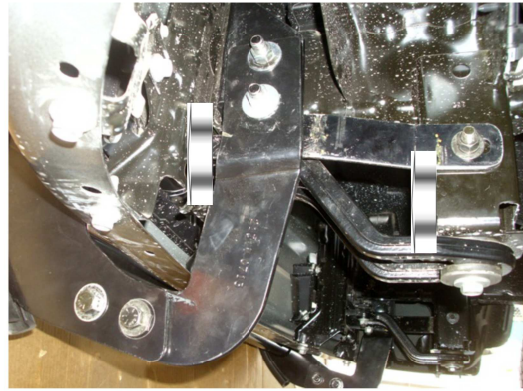


PHOTO 6



9. Attach the defender with 1/2" x 1 1/2" hex bolts, flat and lock washer and hex nut hand tighten. PHOTO # 7 y 8

PHOTO 7

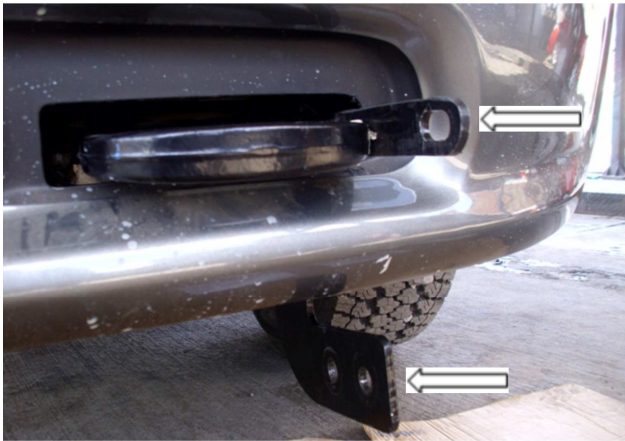
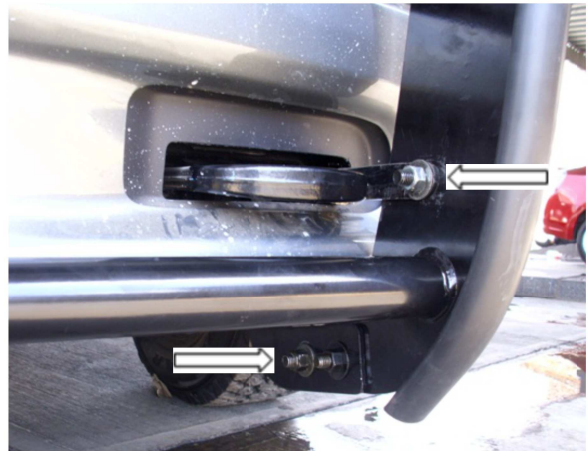


PHOTO 8



10. Align the grille guard assembly with the front of the vehicle and tighten all assembly and installation nuts and bolts. PHOTO # 9
11. Periodically it may need a bolts re-tighten.
12. Fill the warranty card and place it inside your vehicle's glove box.

## PHOTO 9



***FOR TECHNICAL OR WARRANTY INFORMATION CALL:***

**TOLL FREE (888)427-4466 FAX (714)672-0278  
GO RHINO! Products® 591 W. Apollo St. Brea, CA 92821**

If the vehicle does not have factory tow hooks.  
Cut this path. Place the path over the plastic cover to trim it.

