

Winchbumper 23364

Installation Instructions Ford Superduty F-250, F-350 1999-2004 *exclud. 4x4 version with front leaf spring suspension

Parts List:	(1) Hardware kit including:	
QTY	(10) 1/2 x 1 1/2" hex. Head bolts	(2) 1/4" lock nuts
(1) Grille guard	(8) 3/8 x 1" hex. Head bolts	(14) 1/2" flat washers
(1) Main bracket set	(2) 1/4 x 1" hex. Head bolts	(8) 3/8" flat washers
(1) Auxiliary bracket set	(14) 1/2" lock nuts	(2) 1/4" flat washers
(1) License plate assembly	(8) 3/8" nuts	
(2) Bolt plate	(8) 3/8" lock washers	
(1) Brush guard set		
(1) Auxiliary bracket complement set		

Tools required:			
3/4" wrench	9/16" wrench	7/16" wrench	7/32" Allen wrench
3/4" socket	9/16" socket	7/16" socket	Ratchet

Instructions: **Approximated installation time: 45 min.**

1. Read and understand instructions completely before beginning installation.
 2. Remove the bumper of the vehicle to make an installation easy. Picture 8 - 9.
 3. In case the vehicle counts on tow hooks, it will be necessary to remove them to install the main brackets set.
 4. Remove the tow hooks, by removing (3) 12 mm factory bolts.
 5. Remove the three nuts on the underside of the blocker bar as shown in picture 2. Remove blocker bar. On some models, to remove the blocker bar, remove the four bolts that hold the blocker bar to the bracket as shown in picture 3.
 6. While the bumper this still removed of the vehicle, inserts the bolt plate to the inside of the frame, Illustration 1. To place the auxiliary bracket in these bolts and attach with: (2) 1/2" flat washers, (2) 1/2" lock nuts, by each side. Leave loose. Picture 5.
Install the auxiliary bracket complement on auxiliary bracket and attach with: (2) 3/8 x 1" hex head bolt, (2) 3/8" flat and lock washer, (2) 3/8" hex nut, by each side. Leave loose. Picture 6.
 7. Install main brackets to frame rails at tow hook holes and attach with: (3) 1/2 x 1 1/2" hex head bolt, (3) 1/2" flat and lock washers, (3) 1/2" lock nuts, by each side. Tighten hardware before bumper is re-installed. Refer to Torque Value Chart for proper torque.
 8. Re-install the bumper. The bumper must not interfere with the main mounting brackets. **NOTE: to avoid the bumper to knock one of the bumper is recommended settle between two people.**
 9. Re-install blocker bar.
 10. Install the Pull Pro to main mounting brackets and attach with: (2) 1/2 x 1 1/2" hex head bolt, (2) 1/2" flat washers, (2) 1/2" lock nuts, by each side. Leave loose. Picture 7.
 11. Install the Pull Pro to auxiliary bracket complement and attach with: (1) 3/8 x 1" hex head bolt, (1) 3/8" flat and lock washers, (1) 3/8" hex nut, by each side. Leave loose. Picture 6.
- If you do not want to install the brush guard set, skip step 12.**
12. Install the brush guard to the plates with the Pull Pro and attach with: (2) 3/8 x 1 1/2" allen button head bolts, (2) 3/8" flat and lock washers, (2) 3/8" hex nut, and one brush guard gaskets, by each side. Leave loose. Picture 8 - 9.
 13. If its vehicle is with tow hooks, install tow hooks to tapped holes in main brackets using the M12 factory bolts and nuts that you removed at the beginning of the installation.
 14. If needed, install License Plate bracket to underside of winch channel and attach with: (2) 3/8 x 1" hex head bolt, (2) 3/8" flat and lock washers, (2) 3/8" hex nut. Attach the License Plate and attach with: (2) 1/4" hex head bolt, (2) 1/4" flat washers, (2) 1/4" lock nuts.
 15. Make any final adjustments to the alignment of the Pull Pro and tighten all bolts. Using torque appropriate, beginning of down upwards.
 16. You may need to periodically re-tighten the bolts.

Torque value chart	Bolt Size	1/4-20	3/8-16	1/2-13	12mm
	Torque, ft-lbs.	5 ft-lbs	34 ft-lbs	87 ft-lbs	60 ft-lbs
	Torque, Nm	7 Nm	46 Nm	118 Nm	90 Nm

Cleaning and care instructions:

Diseño:

Calidad:

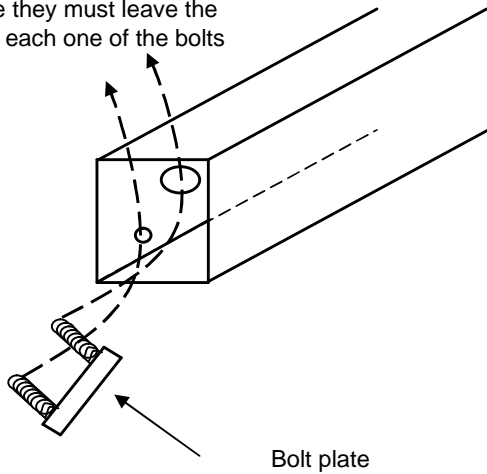
Protect the finish with a non-abrasive automotive wax, (e.g. Pure Carnauba) on a regular basis. The use of any soap, polish, or wax that contains an abrasive is detrimental to the finish, as the compounds scratch the finish and cause corrosion.

Revised 9/11/2006

G:\Usuarios\Diseño\Instructivos PDF\53s\53039-I.Pdf

ILLUSTRATION 1

Here they must leave the body each one of the bolts

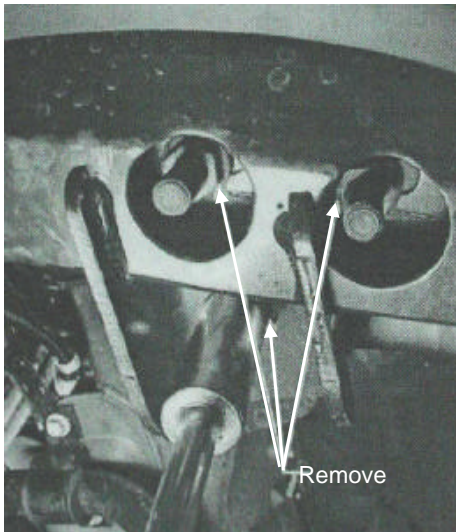


PICTURE 1



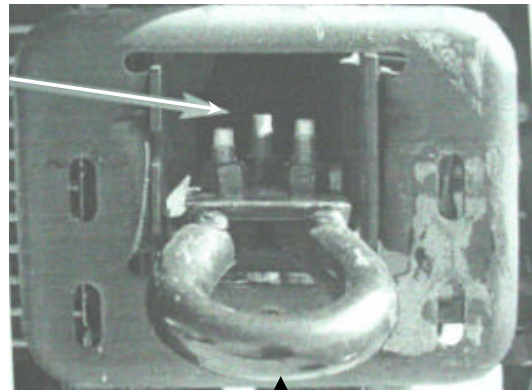
Bumper removed

PICTURE 2



PICTURE 3

Bolts M12



Tow hooks

Cleaning and care instructions:

Diseño:

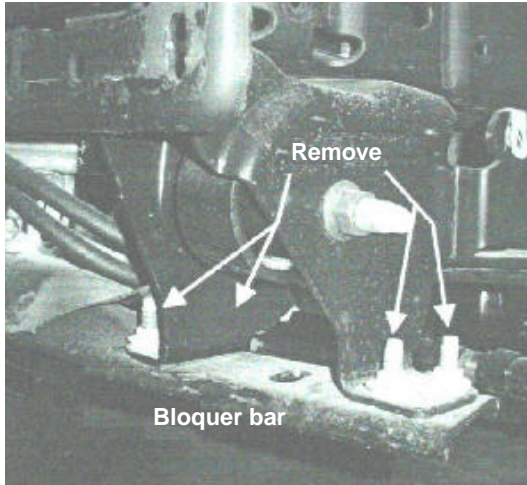
Calidad:

Protect the finish with a non-abrasive automotive wax, (e.g. Pure Carnauba) on a regular basis. The use of any soap, polish, or wax that contains an abrasive is detrimental to the finish, as the compounds scratch the finish and cause corrosion.

Revised 9/11/2006

G:\Usuarios\Diseño\Instructivos PDF\53s\53039-I.Pdf

PICTURE 4



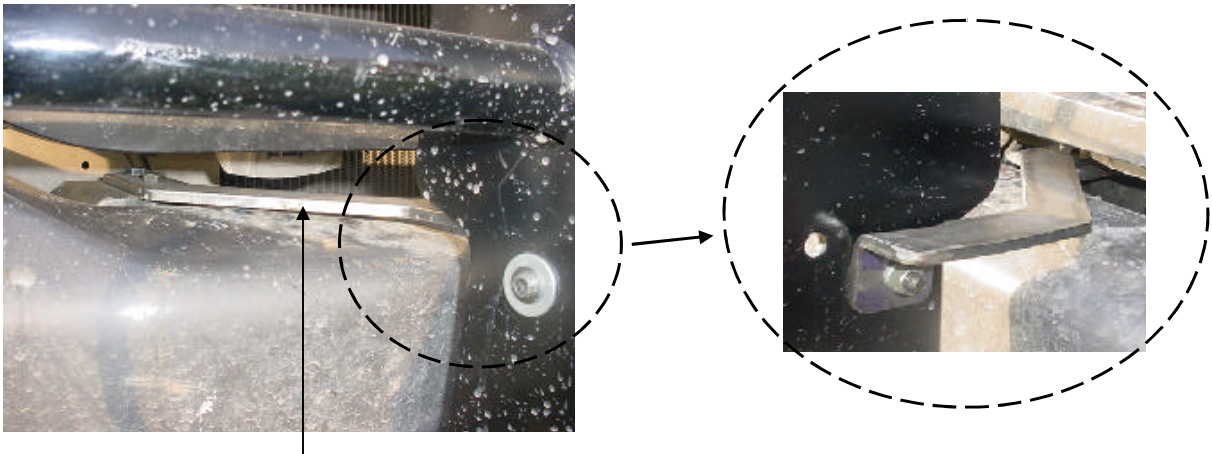
Picture driver side

PICTURE 5



Auxiliary bracket. Picture passenger side

PICTURE 6



Auxiliary bracket complement installed.
Picture passenger side.

Cleaning and care instructions:

Protect the finish with a non-abrasive automotive wax, (e.g. Pure Carnauba) on a regular basis. The use of any soap, polish, or wax that contains an abrasive is detrimental to the finish, as the compounds scratch the finish and cause corrosion.

Diseño:

Calidad:

Revised 9/11/2006

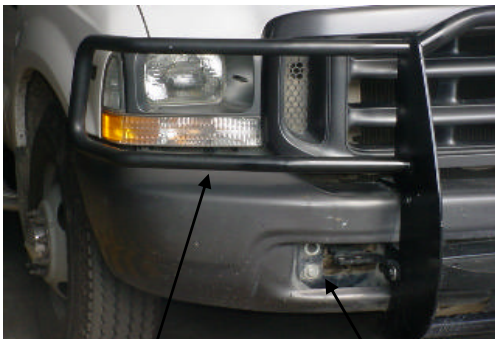
G:\Usuarios\Diseño\Instructivos PDF\53s\53039-I.Pdf

PICTURE 7



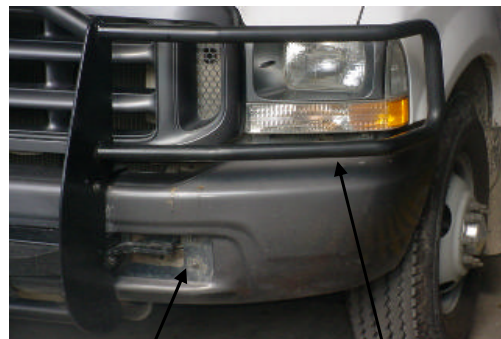
Main mounting bracket installed. Picture driver side.

PICTURE 8



Brush guard installed. Picture passenger side

PICTURE 9



Brush guard installed. Picture driver side

Bolts to remove to clear the bumper



Pull Pro Installed

Cleaning and care instructions:

Protect the finish with a non-abrasive automotive wax, (e.g. Pure Carnauba) on a regular basis. The use of any soap, polish, or wax that contains an abrasive is detrimental to the finish, as the compounds scratch the finish and cause corrosion.

Diseño:

Calidad:

Revised 9/11/2006

G:\Usuarios\Diseño\Instructivos PDF\53s\53039-I.Pdf