

INSTALLATION INSTRUCTIONS
Pull Pro 53064 (1-40) / Winch Bumper 23363 (MB-MPS)
Pick Up F-Series, Lobo (Heritage) 1997 - 2005

Parts List:	(1) 53064 Hardware kit including:		
QTY	7 (4) 1/2 x 5" Hex head bolt	16 (2) 1/4 x 1" Hex head bolt	
1 (1) Pull Pro	8 (8) 1/2 x 1 1/4" Hex head bolt	17 (2) 1/4" Flat Washer	
1a (1) Central Channel/Tube	9 (4) 1/2" Flat Washer Z.P.	18 (2) 1/4" Lock Nut	
2 (2) Main Bracket (Driver & Pass.)	10 (8) 1/2" Flat Washer B.P.	Modular Pull Pro includes extra:	
3 (2) Auxiliary Brackets 1	11 (4) 1/2" Lock nut Z.P.		(1) Brushguard set
4 (2) Auxiliary Brackets 2	12 (8) 1/2" Lock Nut B.P.		(6) 3/8 x 1 1/4" button allen head bolts
5 (1) License plate bracket	13 (6) 3/8 x 1 1/4" hex head bolt		(4) 3/8" flat washer
6 (4) Thick flat washers	14 (6) 3/8" Flat washer	(4) 3/8" lock nut	
	15 (6) 3/8" Lock nut		

Tools required:			
Socket/Wrench 3/4"	Socket/Wrench 7/16"	Ratchet	Llave allen 7/32"
Socket/Wrench 9/16"	Socket/Wrench 1/2"	Extension ratchet	

Instructions: **Aproximated installation time: 40 min.**

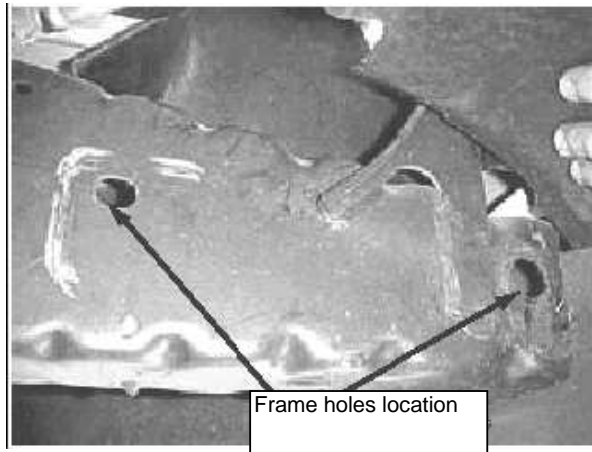
1. Before beginning the installation, please read all directions carefully and verify that all necessary hardware is accounted for. If any parts are missing, stop the installation and contact your distributor immediately.
NOTE: The center channel/tube is already installed, if you install a winch higher than 11" you must remove the central channel/tube.
2. Locate the existing holes on the frame of the vehicle, as shown in picture 1. Place the main brackets and fix them with the 1/2 x 5" hex. head bolts, flat washers and lock nuts. **Note:** The bolts are introduced through the external side of the frame, in the head side of the bolt the thick flat washers are used, in the other side the flat washers zinc plated. Leave loose. Picture 2.
3. Cut the hooper of the bumper slightly in order to let the main bracket go out.
4. Place the PullPro up to the main brackets, align the holes and tighten using 1/2 x 1 1/4" hex. head bolt, flat washers and lock nuts. Tighten with your hand.
5. Locate and remove the nuts that fix the bumper in the inside part as shown in picture 3. Place the auxiliary bracket 1 and bolt it with the nuts you removed before. **Note: Follow this step in one side at a time.**
6. Install the auxiliary bracket 2 up to the auxiliary bracket 1 using 3/8 x 1 1/4" hex. head bolts, flat washers and nuts. Picture 3. Leave loose.
7. Fix the auxiliary bracket to the main plate of the PullPro, using 1/2 x 1 1/4" hex head bolt, flat washers and nuts. Leave loose. Picture 4.
8. Install the brushguards using a brushguard gasket between the brushguard and the PullPro plate, tighten with 3/8 x 1 1/4" button allen head bolt, flat washers and lock nuts. Leave loose.
9. If you want to relocate the license plate, tighten the license plate bracket to the winch plate using 3/8" hex. head bolts, washers and nuts, tighten the license plate on the license plate bracket using 1/4" hex. head bolts, washers and nuts.
10. Make any final adjustment to the alignment of the PullPro and tighten all bolts. **Note:** Before tightening the bolt, be sure the Pull Pro does not interfere with the opening of the hood.
11. You may need to retighten all bolts periodically.

Cleaning and care instructions:	Diseño:	Calidad:
--	----------------	-----------------

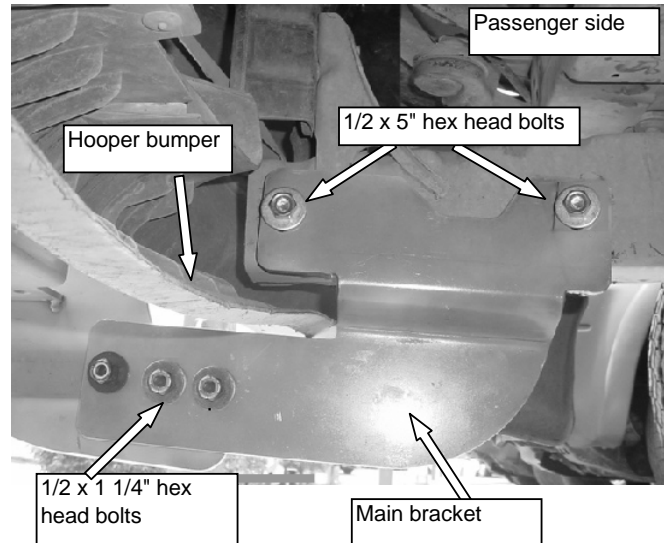
Protect the finish with a non-abrasive automotive wax, (e.g. Pure Carnauba) on a regular basis. The use of any soap, polish, or wax that contains an abrasive is detrimental to the finish, as the compounds scratch the finish and cause corrosion.

INSTALLATION INSTRUCTIONS
Pull Pro 53064 (1-40) / Winch Bumper 23363 (MB-MPS)
Pick Up F-Series, Lobo (Heritage) 1997 - 2005

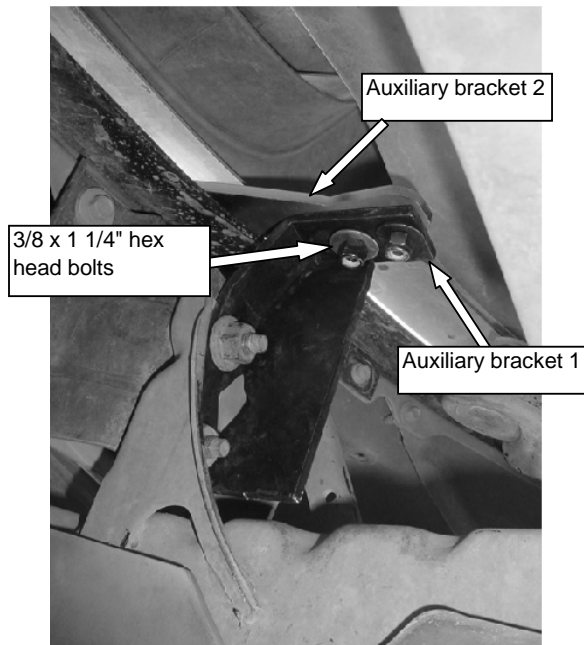
PICTURE 1



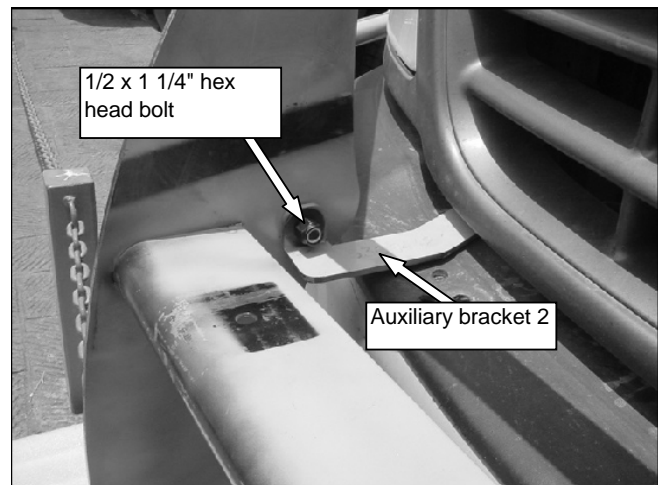
PICTURE 2



PICTURE 3



PICTURE 4



Protect the finish with a non-abrasive automotive wax, (e.g. Pure Carnauba) on a regular basis. The use of any soap, polish, or wax that contains an abrasive is detrimental to the finish, as the compounds scratch the finish and cause corrosion.