



## Installation Instructions

### Winch Guard Part Number 23218B & 23218MB

### 2009-2016 Dodge Ram 1500 2/4WD

(Not compatible with ParkSense®, Sport, Express and Rebel Models)

#### Parts List

Item	Qty.	Part #	Description	Torque
1	1	534230AA	Winch Guard	
2	1Pr.	533240GB	* Brush Guards	
3	2	533244HB	Main Bracket	
4	2	533240BA	Extension Bracket	
5	1 Pr.	534234AA	Auxiliary Bracket	
6	2	534234BA	Complementary Auxiliary Bracket	
7	6		* 3/8" x 1 1/4" Button Head Bolt (black)	30 ft. lbs.
8	6		* 3/8" Flat Washer (black)	
9	6		* 3/8" Lock Nut (black)	
10	2		1/2" x 1 1/4" Carriage Bolt (black)	65 ft. lbs.
11	8		1/2" x 1 1/4" Hex Bolt (black)	65 ft. lbs.
12	12		1/2" Flat Washer (black)	
13	10		1/2" Lock Nut (black)	
14	2		M12 x 40mm Hex Bolt	65 ft. lbs.
15	6		1/2" x 1 1/4" Hex Bolt	65 ft. lbs.
16	8		1/2" Flat Washer	
17	2		1/2" Lock Washer	
18	6		1/2" Nylon Lock Nut	

#### **Tools Required**

Standard & Metric Sockets

Standard & Metric Wrenches

Ratchet & Ratchet Extension

Slotted Screwdriver

Ratchet & Ratchet Extension

#### **Approximate installation**

**time: 60 min**

**\* Included with Winch Guard & Brush Guards #23218MB**

#### **Important Installation Notes and Suggestions**

Read the assembly and installation instructions completely and verify that all of the parts listed are accounted for. If you have defective, missing or damaged parts or need assistance, please contact Go Rhino Products for fast, friendly customer service at: (888) 427-4466 or email: sales@gorrhino.com

To maintain and care this product keep it clean and do not use abrasive cleaners or polish waxes.

**Texture Painted Finish:** Mild liquid detergent may be used. **Polished Stainless & Semi Gloss**

**Painted Finishes:** We recommend using only non-abrasive automotive wax such as pure carnauba to avoid scratches and rust.

If equipped with ParkSense, installation of this grille guard will interfere with the function.

The center channel/tube is installed in the lower position; if you install a winch higher than 11" you can raise the central channel/tube to the next hole position.

### Installation Instructions

**Step-1** If your vehicle has factory tow hooks, they must be removed. If your vehicle does not have factory tow hooks you must remove the plastic cover from the bumper, (Photo 1). **NOTE:** Tow hooks and plastic cover will not be reinstalled.

**Step-2** Locate the nuts and studs that secure the bumper bracket to the frame rail. Remove the (2) lower nuts, (Photo 2).



Photo1

Auxiliary bracket comes out

Tow Hook and plastic cover.

Ext. bracket comes out

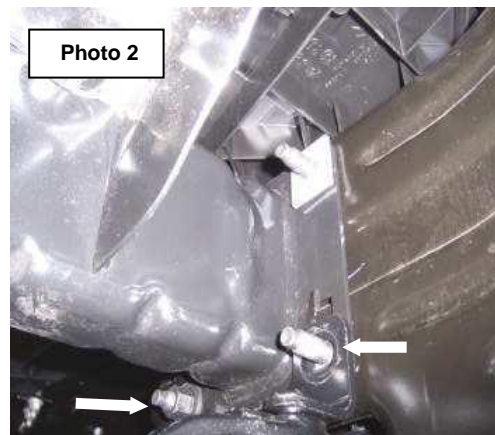


Photo 2

**Step-3** Position the extension bracket from behind the bumper through the opening as shown, (Photo 3). Place the main bracket over the studs and secure the bracket to the frame using the (2) factory nuts previously removed and (1) M12 x 40mm hex bolt, (1) 1/2" flat and (1) 1/2" lock washers, (Photo 4 & 5). Do not tighten.

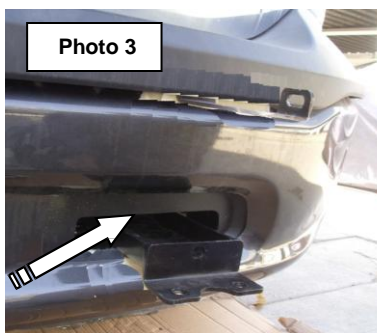


Photo 3

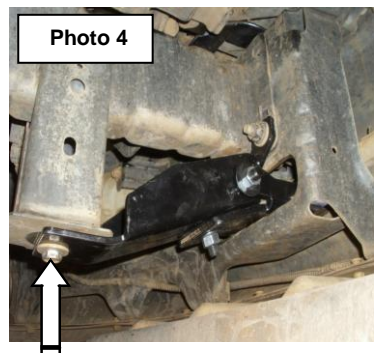


Photo 4

M12 x 40mm Hex Bolt

1/2" x 1 1/4" Hex Bolt

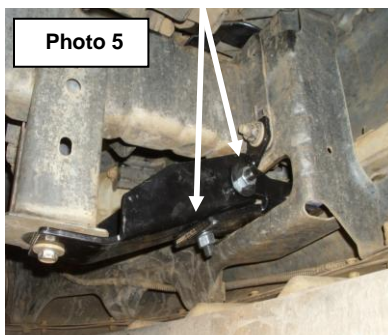


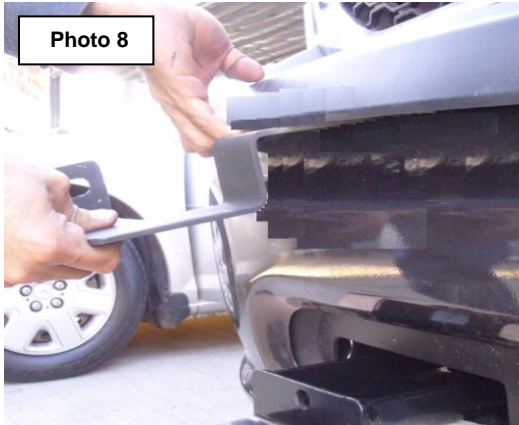
Photo 5

**Step-4** Remove the upper factory nut from the frame end plate. Place the complementary auxiliary bracket attach using the nut removed, (Photo 6 & 7).



**Step-5** Position the auxiliary bracket through the upper opening in the front bumper by lifting up the plastic bumper cover, (Photo 8).

**Step-6** Attach the auxiliary bracket to the complementary auxiliary bracket using (1) 1/2" x 1 3/4" carriage head bolt, (1) 1/2" flat washer, (1) 1/2" lock washer and (1) 1/2" hex nut, (Photo 9).



**Step-7** Secure the winch guard to the extension brackets and auxiliary brackets using the supplied 1/2" x 1 1/4" hex bolts, flat washers and lock nuts, (Photo 10).

**Step-8** Install the brush guards to the winch guard using the supplied 3/8" x 1 1/4" button head bolts, flat washers and lock nuts, (Photo 11).



**Step-9** Align the winch guard with the vehicle and tighten the factory and supplied nuts and bolts,

**Step-10** Remember to periodically check and retighten all nuts and bolts.