



## PRODUCT SAFETY & LEGAL DISCLAIMER

- **IMPORTANT READ ALL INSTRUCTIONS CAREFULLY BEFORE INSTALLING, FAILURE TO DO SO MAY CAUSE PERSONAL INJURY OR DAMAGE TO PRODUCT AND/OR PROPERTY.**
- **Review the product package and contents prior to beginning the installation.** Take care when opening the packaging and removing items. If a return is needed you will want to return the product in its original packaging if possible.
- This instruction guide is provided as a GENERAL installation guide, some vehicles vary dimensionally and may require additional steps.
- Test fit the product on the vehicle prior to any third party modifications and or finishing. The manufacturer and/or distributors do not accept responsibility for third party charges, labor and or third part replacement modifications. Some modifications may void the factory warranty.
- Exercise due-diligence when installing this product. The manufacturer and distributors of this product do not accept any responsibility for vehicle damage or personal injury resulting from the installation of this product. Careless installation and operation can result in serious injury or equipment damage.
- This product is for general off-road use. All liability for installation and use rests with the owner/operator.
- **INSTALLER:** Once installation is complete, please return this guide along with other documentation included in this product back to the consumer for future reference. The manufacturer/distributors of this product do not guarantee this particular version will be available at a later date.

## INJURY HAZARD

Please complete a shop and tool inspection prior to beginning the installation.

- Always make sure you have a clean, dry and well lit work area.
- Always remove jewelry, loose fitting clothing and wear protective gloves and eye protection.
- Always use extreme caution when jacking or raising a vehicle for work. Set the emergency brake and use tire/wheel blocks and jack stands. Refer to the vehicle manufacturer hand book. Utilize the vehicle manufacturers designated lifting points.
- Always use appropriate and adequate care in lifting parts during disassembly and installation. Seek help in lifting heavy or large items into place. Utilize jacks and or lifting devices when available.
- Always insure products are secure during disassembly and installation.
- Always wear eye protection and take steps to protect any exposed skin during the installations. Drilling, cutting and grinding plastic and metal may create flying particles that can cause injury.
- Always use extreme caution when drilling, cutting and or grinding on a vehicle. Thoroughly inspect the area to be drilled, on both sides of material, prior to modification and relocate any objects that may become damaged.
- Always assemble and tighten all fasteners per the installation instructions.
- Always route electrical cables carefully. Avoid moving parts, parts that may become hot and rough or sharp edges.
- Always insulate and protect all exposed wiring and electrical connections.

© 2016 Go Rhino Products. All rights reserved

[www.gorhino.com](http://www.gorhino.com)

589 W. Apollo St., Brea, CA 92821

P: 888 427 4466

## MAINTENANCE AND CARE

- Always perform regular inspections and maintenance on mounts and related fasteners.
- Periodically check and tighten all fasteners.
- Stripped, fractured, or bent fasteners must be replaced.
- After washing the vehicle make sure to fully dry all surfaces.
- In areas with cold temperatures make sure to wash the product often to remove harmful materials used on road ways.
- Never use abrasive cleaners or polish compounds. Clean with a gentle soap and water. If you use wax use a non-abrasive automotive wax such as pure carnauba wax.

## WARNING

Some products have been designed to work together with factory rear sensor systems, factory forward facing sensor systems and factory air bags.

- Installation of some of these products may alter the factory sensor system performance.
- Factory sensors may read shackles or hooks protruding from the fairlead and or tow hooks.
- All sensor testing is completed by Go Rhino Products and or third party testing labs on modified vehicles.
- Sensor sensitivity, factory sensor housing, orientation, and operating conditions are all variables that will influence functionality of the sensors.
- Installation of some product may affect the factory air bag systems.
- Some products allow the use of third party products such as winches, shackles, hooks, etc. Follow the respective manufacturers operating instructions for use with our products.
- Make sure to fully understand the product, its intended use and operation prior to use.
- Above all... be safe!

If you need installation service for your new product, call the authorized distributor from whom you purchased the product or an authorized installation service company which can be found by calling toll free 1-888-427-4466

## LIMITED WARRANTY

Go Rhino warrants to Buyer that for a period of five (5) years from the date of shipment of the product(s) ("Warranty Period") for black finishes and chrome finishes, that such products will materially conform to the specifications set forth in Go Rhino's specifications in effect as of the date of shipment(s) and will be free from material defects in material workmanship.

Go Rhino warrants to Buyer that for the life of the product(s) from the date of shipment of the product(s) ("Warranty Period") for polished stainless steel finished products purchased after April 2004, that such products will materially conform to the specifications set forth in Go Rhino's specifications in effect as of the date of shipments and will be free from material defects in material workmanship.

Warranty claims must be accompanied with the original invoice and photos of the product. It is the customer's responsibility to clean regularly and protect finish with regular applications of a nonabrasive polish that is compatible with the product's finish.

This warranty covers the cost of the product only and does not include the cost of removal, installation, third party modifications or shipping of the product. In no event shall Go Rhino be liable to buyer or any third party for any damage or harm caused by the product or use thereof, regardless of whether such damages were foreseeable and whether or not Go Rhino has been advised of the possibility of such damages, notwithstanding the failure of any agreed or other remedy of its essential purpose. This warranty is void if the product shows signs of alteration, misuse, mishandling, improper care, neglect, improper application and/or damage due to improper installation.

With respect to any such product(s) during the limited warranty period, Go Rhino shall, in its sole discretion, either: (i) provide a one-time repair or replacement of such products (or the defective part) or (ii) credit or refund the price of such products at the pro rata contract rate provided that, if Go Rhino so requests, Buyer shall, at Go Rhino's expense, return such product(s) to Go Rhino. The remedies shall be the Buyer's sole and exclusive remedy and Go Rhino's entire liability for any breach of the limited warranty(ies).

Go Rhino disclaims all other warranties except to the extent that any such warranty cannot be validly disclaimed under applicable law.

© 2016 Go Rhino Products. All rights reserved

[www.gorhino.com](http://www.gorhino.com) 589 W. Apollo St., Brea, CA 92821 P: 888 427 4466

## FINISH LIMITED WARRANTY

Limited lifetime on stainless steel products (after April 2004)

5 year warranty on black powder coat products

5 year warranty on chrome products

This warranty does not cover exposed welds

Finish warranty covers peeling, flaking, or cracking. Washing all finishes regularly with car wash soap and rinsing well with water is the best method for maintaining the finish on your products. You must also protect the finish with nonabrasive automotive wax on a regular basis. The use of any compound which contains abrasives becomes a self-defeating exercise as the compound scratches the finish and opens it to corrosion. The use of harsh chemicals used to remove bugs and tar may also cause the finish to fail and should be avoided.

If you are unsatisfied with your purchase please contact the establishment you purchased the product from.

If you need to place a warranty claim or need assistance, the Go Rhino customer service team will answer any questions you may have. Please contact the Go Rhino customer service team at 1-888-427-4466 during normal business hours Monday thru Friday 7 am to 5 pm PST. You may also email [warranty@gorhino.com](mailto:warranty@gorhino.com). In order to better serve you please provide a copy of the original invoice / receipt, a photo of the issue you are experiencing and a photo of the vehicle the product is installed on.

All warranty returns must have an approved RGA number. The RGA number must be clearly marked on the exterior of the return package. All approved warranty returns must be shipped to Go Rhino Products, 1002 Carriers Drive, Laredo, Texas 78045.

## PRODUCT REGISTRATION

Please remember to register your new purchase. You may register your product at [www.gorhino.com](http://www.gorhino.com). Registering your product may help speed any future warranty or customer service inquiries.

**Thank you again for purchasing from Go Rhino Products**

Please take a few minutes to view additional products for your vehicle and more at GORHINO.com. These installation instructions are available on the Go Rhino web site along with installation videos for many of our products.

[www.gorhino.com](http://www.gorhino.com)

[www.bigcountryauto.com](http://www.bigcountryauto.com)

[www.gorhinopd.com](http://www.gorhinopd.com)



## Installation Instructions

### Winch Guard Part Number 23174B & 23174MB

### Chevrolet Silverado1500 2/4WD

(Excludes models with Driver Alert Package & front parking sensors)

PART LIST				
ITEM	QTY	Part No.	Description	Torque
1	1 PC	532760AA	WINCH GUARD	
2	1 SET	532760EA	*BRUSH GUARD	
3	1 SET	231740AA	LOWER BRACKET	
4	1 PC	503764AA	DRIVER SIDE BRACKET	
5	1 PC	503764BA	PASSENGER SIDE BRACKET	
6	1 PC	525764CA	AUXILIARY BRACKET	
7	1 SET	532760IA	LOWER AUXILIARY BRACKET	
8	2 PCS	378312	1/2" "T" BOLT	65 FT-LB
9	4 PCS	524760AA	ROD BOLT	65 FT-LB
10	6 PCS	AST-T197	1/2" X 1 1/2" CARRIAGE HEAD SCREW	70 FT-LB
11	1 PC	AST-T108	1/2" X 1 1/2" HEX HEAD BOLT BLACK	70 FT-LB
12	7 PCS	AST-RP06	1/2" FLAT WASHER BLACK	
13	7 PCS	AST-RPR06	1/2" LOCK WASHER BLACK	
14	7 PCS	AST-TU193	1/2" HEX NUT BLACK	70 FT-LB
15	6 PCS	AST-RP01	1/2" FLAT WASHER BLUE	
16	6 PCS	AST-RPR01	1/2" LOCK WASHER BLUE	
17	6 PCS	AST-TU04	1/2" HEX NUT BLUE	70 FT-LB
18	2 PCS	AST-T367	3/8" X 1 1/4" CARRIAGE HEAD BOLT BLACK	30 FT-LB
19	2 PCS	AST-RP12	3/8" FLAT WASHER BLACK	
20	2 PCS	AST-RPR07	3/8" LOCK WASHER BLACK	
21	2 PCS	AST-TU43	3/8" HEX NUT BLACK	30 FT-LB

**\* Included with Winch Guard & Brush Guards #23174MB**

#### REQUIRED TOOLS

- A. 1/2" Ratchet with extension
- B. 18mm. Socket
- C. 18mm. Wrench
- D. 9/16" Socket
- E. 7/32" Hex key
- F. 3/4" Socket

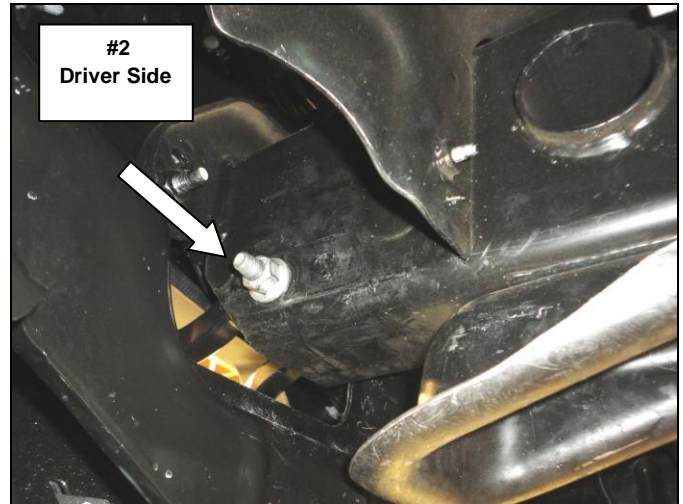
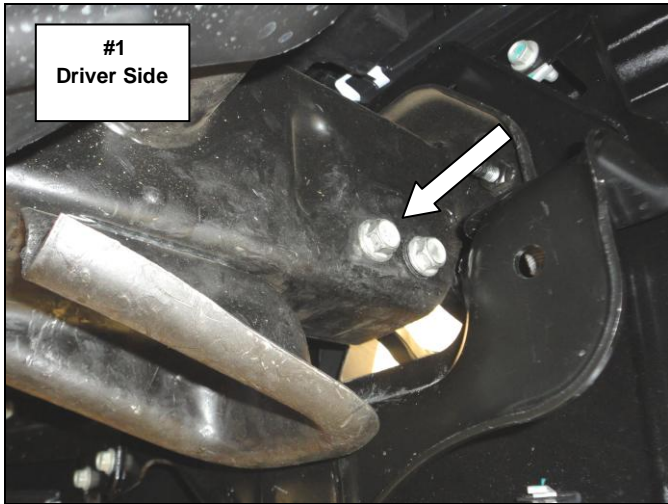
Read the installation instructions completely and verify that all of the parts listed are accounted for. If you have defective, missing or damaged parts or need assistance, please contact Go Rhino Products for fast friendly customer service at: 1-888-427-4466 or email: [warranty@gorhino.com](mailto:warranty@gorhino.com)

#### Notes:

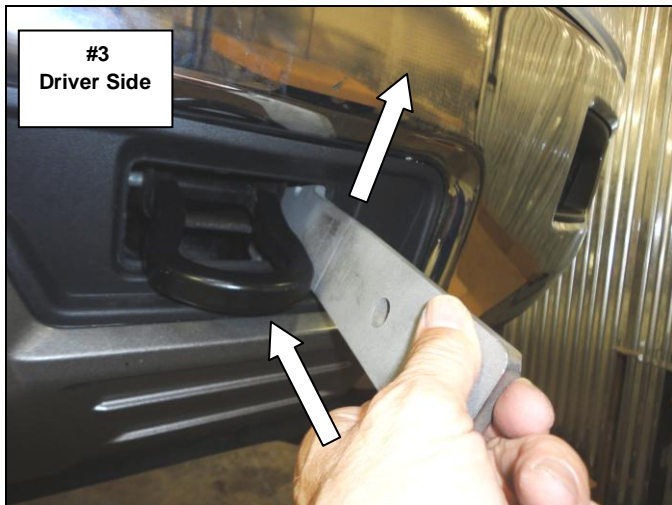
If your vehicle is not equipped with factory tow hooks, attach the upper brackets and auxiliary bracket to the frame using the supplied 1/2" rod bolts, 1/2" flat washers, 1/2" lock washers and 1/2" hex nuts.

Protect the plastic bumper cover prior to the installation.

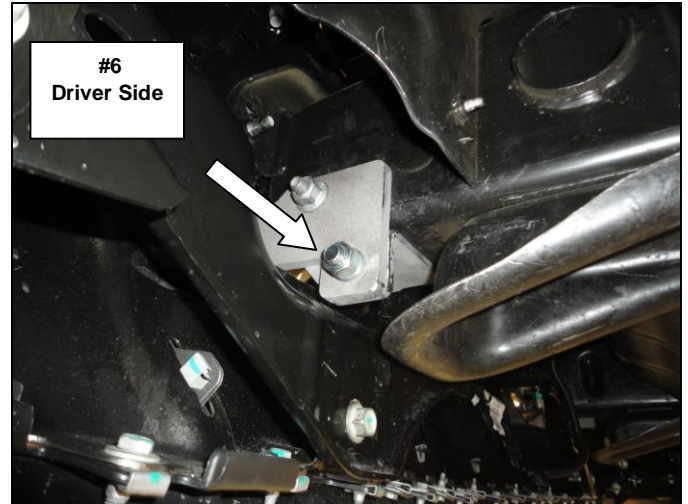
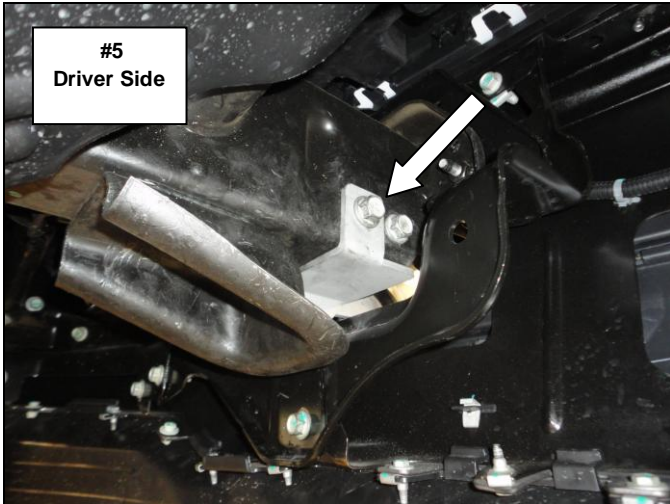
**Step-1** Beginning with the driver side, remove the tow hook rear bolt, nut from the front bolt, (**Photo 1 & 2**) and the foam trim panel from the tow hook opening.



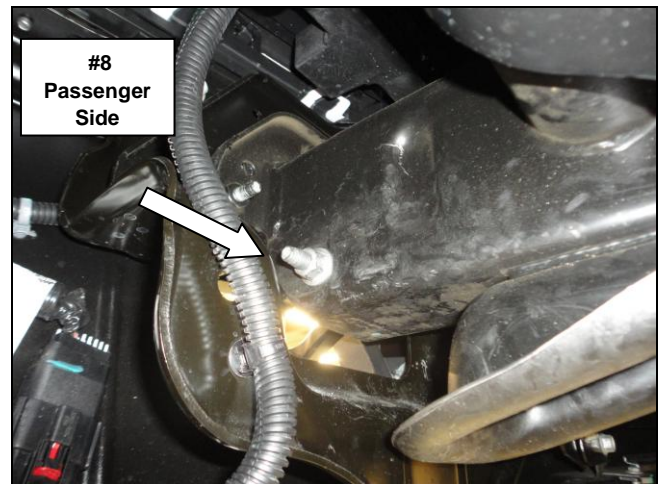
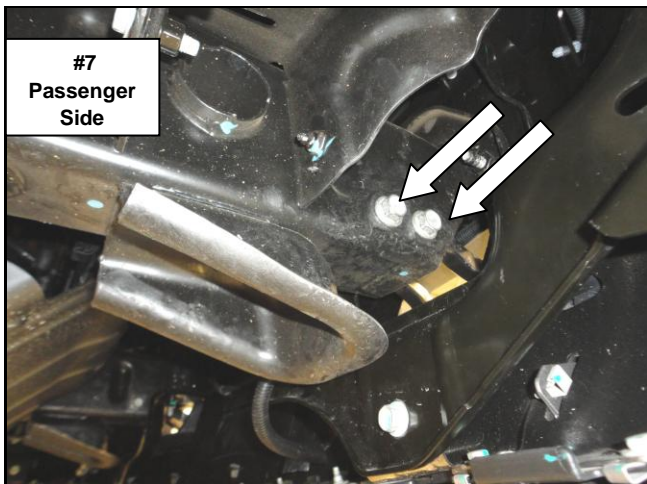
**Step-2** From the tow hook opening, slide the vehicle attachment end of the driver side upper bracket under the frame, rotate the bracket and position upper attachment hole in the bracket over the shank of the front tow hook bolt and reinstall the nut, (**Photo 3 & 4**).



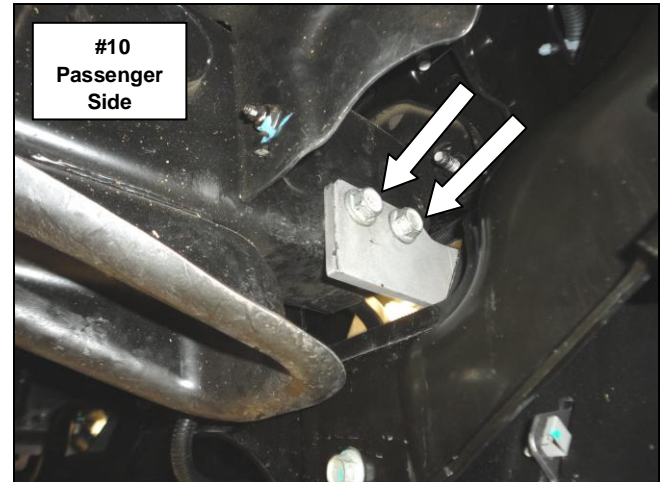
**Step-3** Attach the driver side auxiliary bracket to the side of the frame using the tow hook rear bolt and to the lower hole in the upper bracket using (1) 1/2" x 1 1/2" hex bolt, (1) 1/2" flat washer, (1) 1/2" lock washer and (1) 1/2" hex nut, (Photo 5 & 6).



**Step-4** Passenger side, remove the tow hook front nut and bolt, rear bolt, (Photo 7 & 8) and the foam trim panel from the tow hook opening.



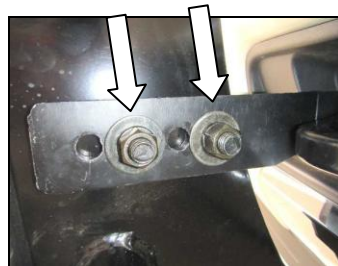
**Step-5** From the tow hook opening, slide the vehicle attachment end of the passenger side upper bracket under the frame, rotate the bracket and align the holes in the bracket with the holes in the side of the frame and reinstall the tow hook front bolt and nut, then the rear bolt, (**Photo 9 & 10**).



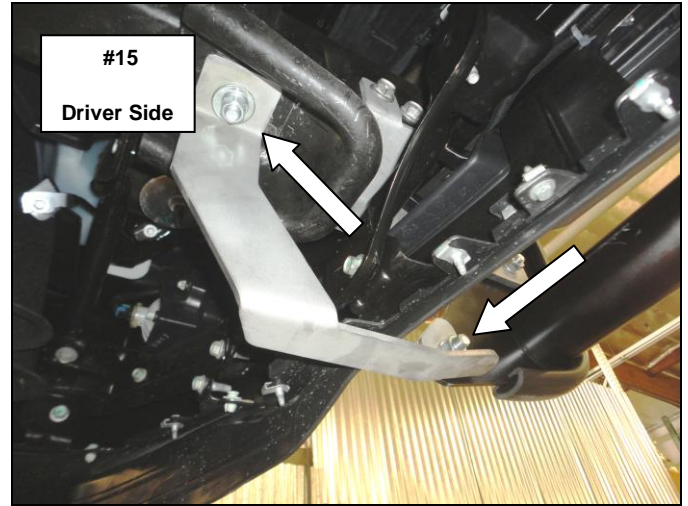
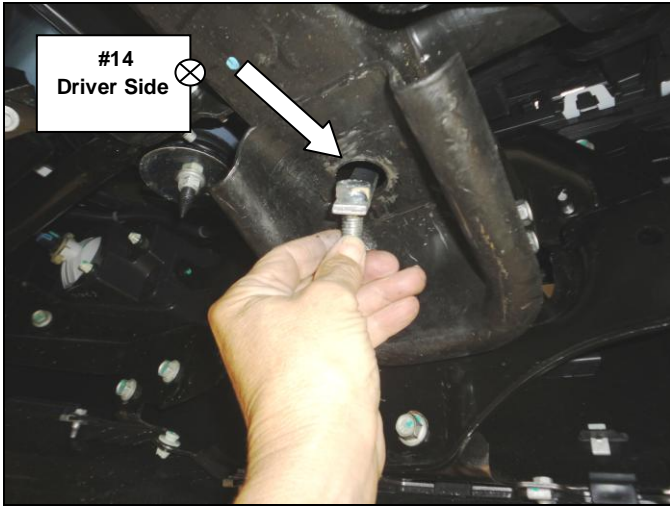
**Step-6** Identify the holes to use for your vehicle model (Photo 11 & 12) with assistance, position and attach the winch guard to the outside of each upper bracket using (2) 1/2" x 1 1/2" hex bolts, (2) 1/2" Flat washers, (2) 1/2" lock washers and (2) 1/2" hex nuts. Leave the nuts and bolts loose for final adjustment. (Photo 13)



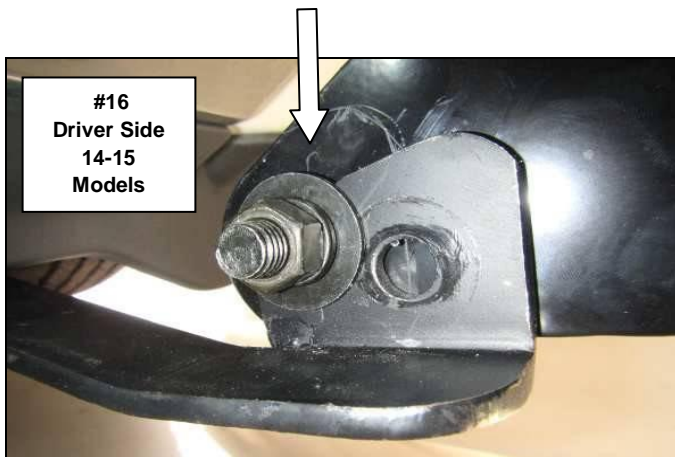
#12  
Passenger  
Side / 16 –  
Up Models



**Step-7** Locate the hole in the bottom of the frame and install (1) 1/2" t-bolt, (**Photo 14 & 15**). Attach the driver side lower bracket to the frame using the t-bolt, (1) 1/2" flat washer, (1) 1/2" lock washer and (1) 1/2" hex nut. Repeat to install the passenger side lower bracket.



**Step-8** Attach the winch guard to the lower bracket using (1) 1/2" x 1 1/2" hex bolt, (1) 1/2" flat washer, (1) 1/2" lock washer and (1) 1/2" hex nut, (**Photo 16 & 17**). Repeat for the passenger side.





**Step-9** Hook the lower auxiliary bracket to the chassis (Photo 18). Attach the lower auxiliary bracket to the lower bracket using (1) 3/8" carriage screw bolt (1) 3/8" flat washer (1) 3/8" lock washer (1) 3/8" hex nut. (Photo 19)



**Step-10** Install the brush guards to the winch guard using the supplied 3/8" x 1 1/4" button head bolts, flat washers and lock nuts, (Photo 20).

**Step-11** Align the winch guard with the vehicle and tighten all factory and supplied nuts and bolts.



**Remember to check and retighten the nuts and bolts every six months.**