



Installation Instructions

Wrangler Grille Guard Part # 13220B

2010-2016 Dodge Ram 2500 & 3500 2 & 4 Wheel Drive

(Not compatible with ParkSense® Front Park Assist)

Parts list

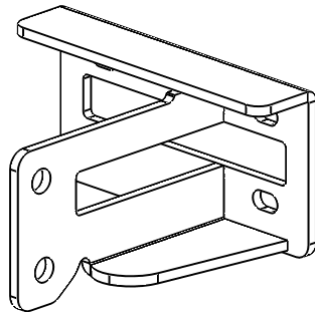
Item	Qty.	Part #	Description	Torque
1	1	576240	Wrangler Guard	
2	1 Pr.	574240DA	Main Bracket	
3	1 Pr.	506244AA	Auxiliary Bracket	
4	8		M10 x 50mm Hex Bolt	33 ft. lbs.
5	16		M10 Flat Washer	
6	8		M10 Lock Washer	
7	8		M10 Hex Nut	
8	6		1/2" x 1 1/2" Hex Bolt	65 ft. lbs.
9	12		1/2" Flat Washer	
10	6		1/2" Lock Washer	
11	6		1/2" Hex Nut	

Tool Required:

3/4", 16mm, 17mm & 18mm Wrench
 3/4", 16mm, 17mm & 18mm Socket
 Ratchet & Ratchet Extension
 Utility Knife
 Tape Rule

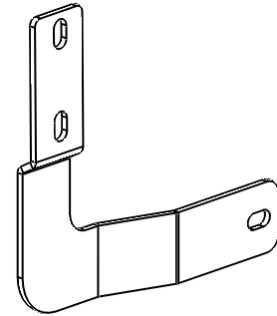
**Approximate
 installation time: 90
 min**

2



**Driver Side
Main Bracket**

3



**Driver Side
Auxiliary Bracket**

Important Installation Notes and Suggestions

If equipped with ParkSense, installation of this grille guard will interfere with the function.

Read the assembly and installation instructions completely and verify that all of the parts listed are accounted for. If you have defective, missing or damaged parts or need assistance, please contact Go Rhino Products for fast, friendly customer service at: (888) 427-4466 or email: sales@gorhino.com

Cutting of the air dam is necessary to complete installation.

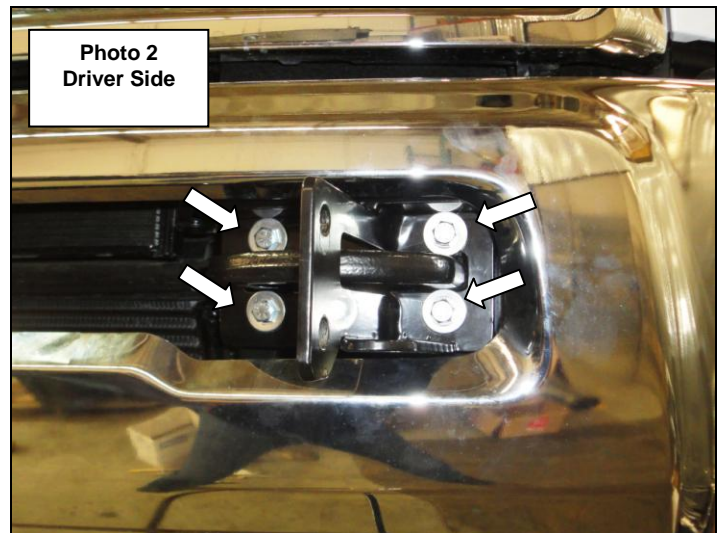
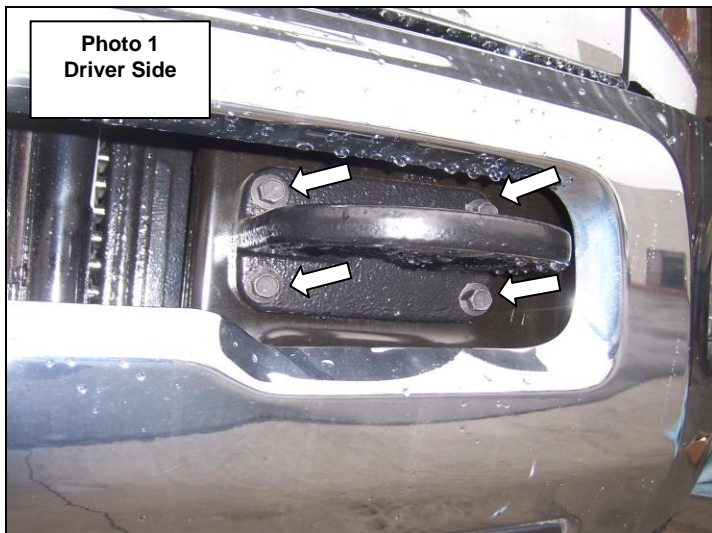
To maintain and care this product keep it clean and do not use abrasive cleaners or polish waxes.

Texture Painted Finish: Mild liquid detergent may be used. **Polished Stainless & Semi Gloss Painted Finishes:** We recommend using only non-abrasive automotive wax such as pure carnauba to avoid scratches and rust.

Step- 1 Beginning with the driver side, remove the nuts, bolts and tow hook, **(Photo 1)**.

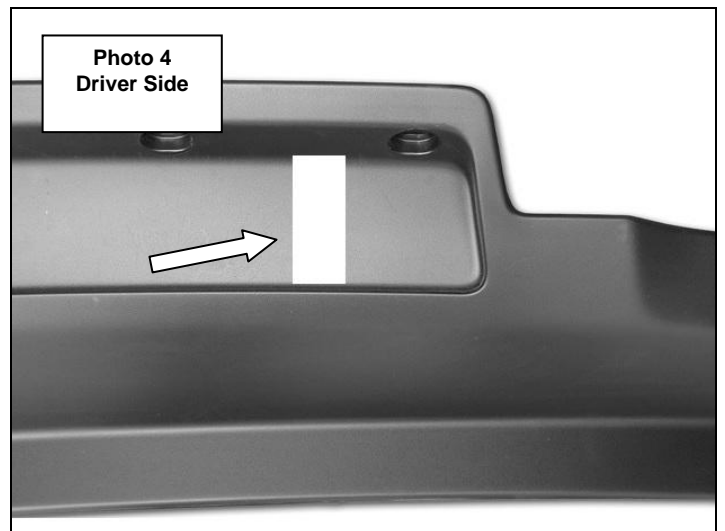
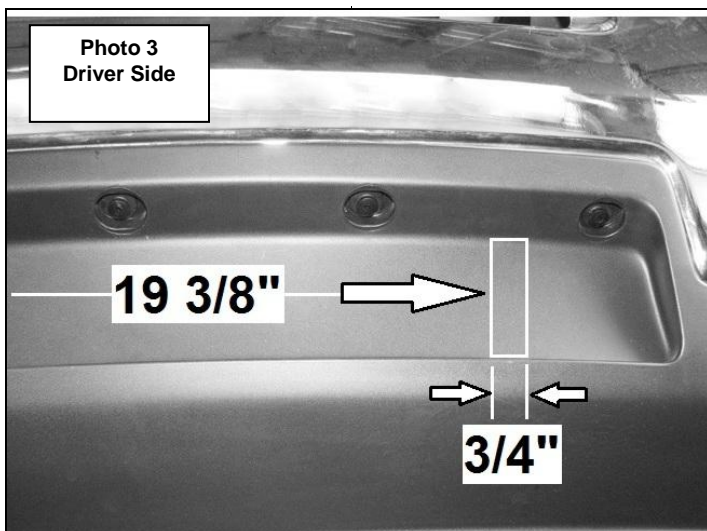
NOTE: The factory nuts securing the inner (2) tow hook bolts may be difficult to remove. Use a socket with a long extension to reach the hex nuts on the inner tow hook bolts.

Step-2 Position the driver side main bracket over the tow hook and secure the bracket and tow hook to the vehicle using (4) M10 x 50mm hex bolts, (8) M10 flat washers, (4) M10 lock washers and (4) M10 hex nuts, **(Photo 2)**. Leave the nuts and bolts loose for final adjustment. Repeat for the passenger side main bracket installation.



Step-3 An opening must be cut out in each side of the lower bumper valance for the auxiliary brackets to extend through. Measure 19 3/8" outward from the center of the bumper valance and mark the area indicated on the driver side of the bumper valance, **(Photo 3)**.

Step-4 Use a utility knife and carefully cut out the opening **(Photo 4)**. Measure and cut an opening in the passenger side of the bumper valance.



Step-5 Remove the (2) factory hex nuts from the paired bolts securing the bumper brackets to the frame, **(Photo 5)**. Position the driver side auxiliary bracket over the paired bolts, and secure the bracket to the frame using the factory hex nuts, **(Photo 6)**. Leave the nuts loose for final adjustment. Repeat for the passenger side auxiliary bracket installation.

Note: The lower bumper valance was removed for photo purposes.



Step-6 With assistance, position the grille guard up to the brackets, and attach the grille guard to each of the upper brackets using (2) 1/2" x 1 1/2" hex bolts, (4) 1/2" flat washers, (2) 1/2" lock washers and (2) 1/2" hex nuts, and to each auxiliary bracket using (1) 1/2" x 1 1/2" hex bolt, (2) 1/2" flat washers, (1) 1/2" lock washer and (1) 1/2" hex nut **(Photo 7)**.

Step-7 Align the grille guard with the vehicle and tighten the factory and supplied nuts and bolts, **(Photo 8)**.

Step-8 Remember to check and retighten the hardware periodically.

