



Installation Instructions
Wrangler Grille Guard Part # 13178B

2014-2016 Toyota Tundra

Do not attempt to install this product on any vehicle other than the one listed above!

Parts list

Item	Qty.	Part #	Description	Torque
1	1	131780AA	Grille Guard	
2	1 Set	532890DB	Lower Bracket	
3	2 Ea	532891BA	Auxiliary Bracket	
4	1 Set	533894EA	Upper Bracket	
5	2 Ea		1/2" x 1 1/2" Carriage Bolt	65 ft. lbs.
6	4 Ea		1/2" x 4 1/2" Hex Bolt	65 ft. lbs.
7	4 Ea		1/2" Flat Washer	
8	4 Ea		1/2" Lock Washer	
9	4 Ea		1/2" Hex Nut	
10	2 Ea		1/2" Lock Nut	
11	8 Ea		1/2" x 1 1/2" Hex Bolt (black)	65 ft. lbs.
12	8 Ea		1/2" Flat Washer (black)	
13	8 Ea		1/2" Lock Nut (black)	

Tool Required:

3/4" Wrench
 3/4" Socket
 10mm, 12mm & 17mm Socket
 Ratchet
 Ratchet Extension 10"
 Swivel Universal Joint Socket
 Adapter
 Flat Blade Screw Driver

**Approximate
 installation time:
 60 minutes**



IMPORTANT INSTALLATION NOTES AND SUGGESTIONS

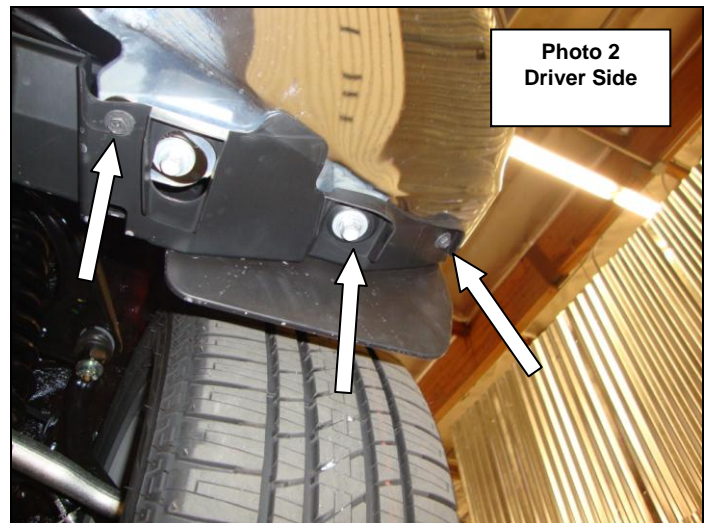
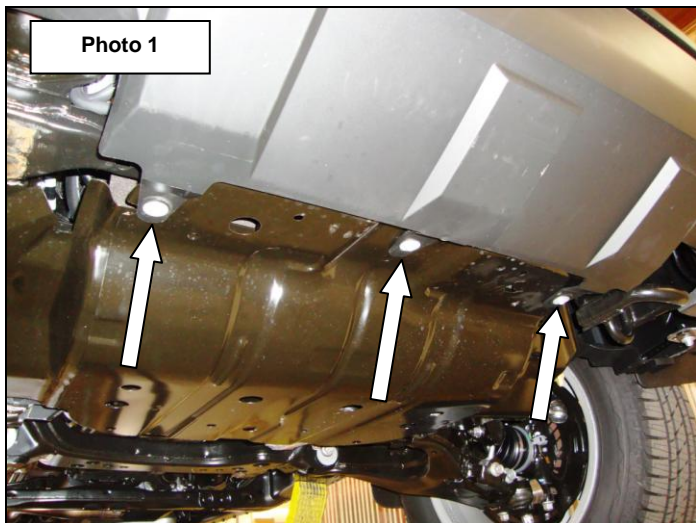
To maintain and care for this product keep it clean and do not use abrasive cleaners or polish waxes. Texture Painted Finish: Mild liquid detergent may be used. Polished Stainless & Semi-Gloss Painted Finishes: We recommend using only non-abrasive automotive wax such as pure carnauba to avoid scratches and rust.

Read the installation instructions completely and verify that all of the parts listed are accounted for. If you have defective, missing or damaged parts or need assistance, please contact Go Rhino Products for fast, friendly customer service at: (888) 427-4466 or email: sales@gorhino.com

Installation Instructions

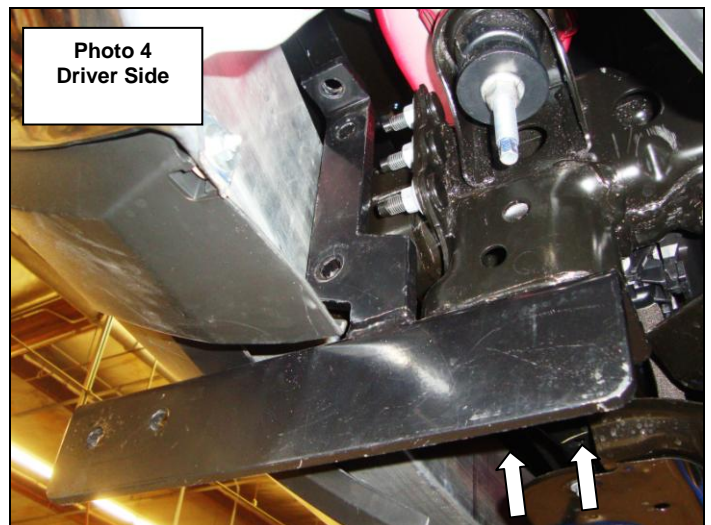
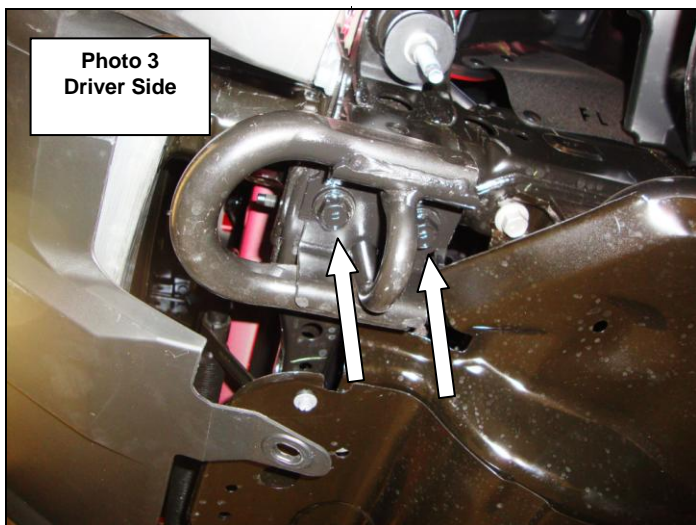
Step-1 Remove the (3) screws securing the bottom of the front bumper valance to the engine under cover, **(Photo 1)**.

Step-2 On each side, remove the (2) screws and (1) bolt securing the fender liner extension to the bumper, **(Photo 2)**.

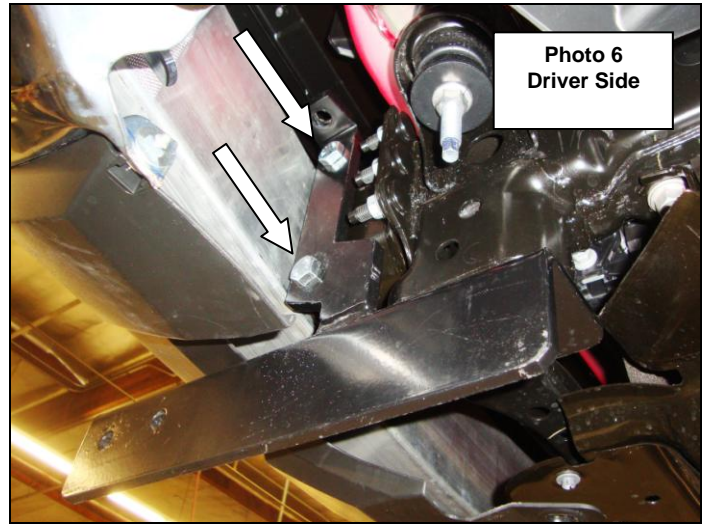
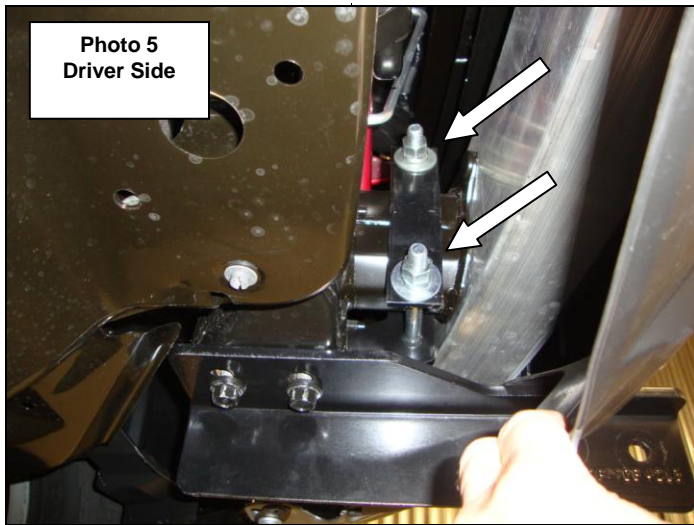


Step-3 Remove (2) bolts securing each tow hook / tie down to the frame, **(Photo 3)**. Remove the tow hooks / tie downs and retain as they can be reinstalled later if desired.

Step-4 Secure the driver side lower bracket to the frame using the factory tow hook bolts, **(Photo 4)**. Leave the bolts loose for final adjustment.

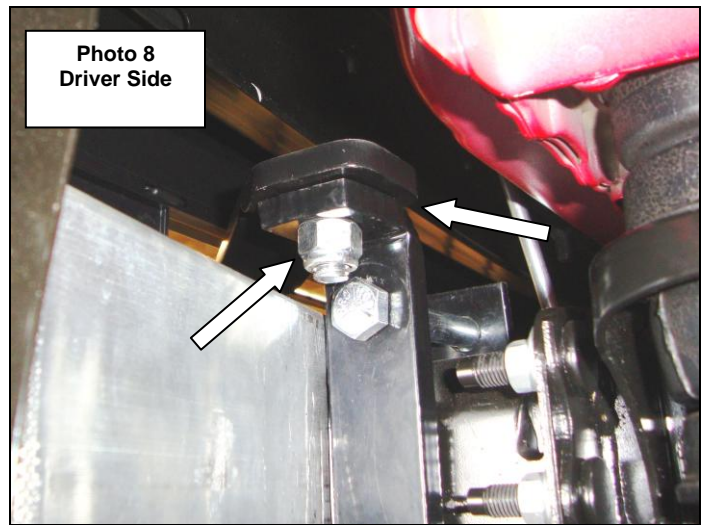


Step-5 Position and attach (1) auxiliary bracket to the driver side lower bracket extension using (2) ½" x 4 ½" hex bolts, (2) ½" flat washers, (2) ½" lock washers and (2) ½" hex nuts, (**Photo 5 & 6**). Leave the bolts loose for final adjustment.



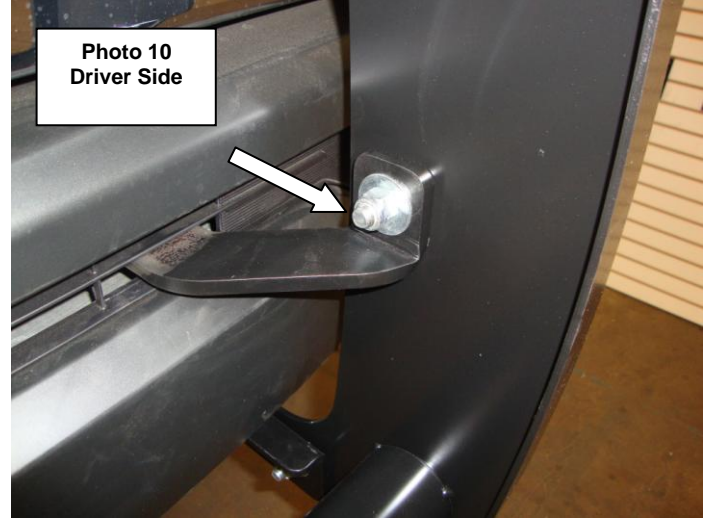
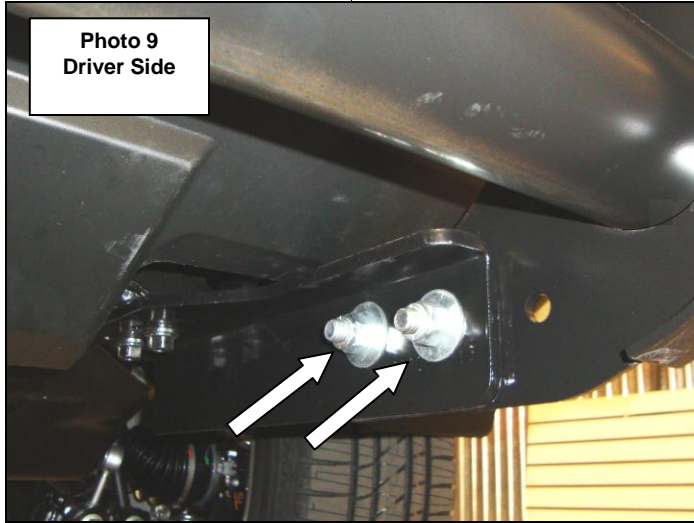
Step-6 From the front of the vehicle, insert the driver side upper bracket through the opening in the bumper valance, (**Photo 7**).

Step-7 Position the driver side upper bracket on top of the lower bracket extension. Secure the upper bracket to the lower bracket using (1) ½" carriage bolt and (1) ½" lock nut, (**Photo 8**). Leave the nut and bolt loose for final adjustment.



Repeat steps 4 through 7 to install the passenger side lower and upper bracket.

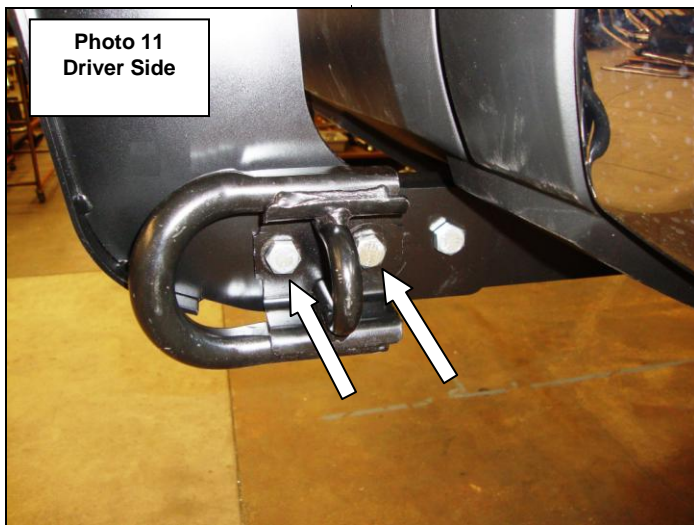
Step-8 With assistance attach the grille guard to each of the lower brackets using (2) ½" x 1 ½" hex bolts, (4) ½" flat washers and (2) ½" lock nuts, and to each upper bracket using (1) ½" x 1 ½" hex bolt, (1) ½" flat washer and (1) ½" lock nut, (**Photo 9 & 10**).



Note: To reinstall the tow hook, use an additional ½" x 1 ½" hex bolt, washer and lock nut, (**Photo 11**).

Step-9 Align the grille guard with the vehicle and tighten the factory and supplied nuts and bolts.

Step-10 Reinstall the fender liner extensions and front bumper valance.



Step-11 Remember to check and retighten the hardware periodically.